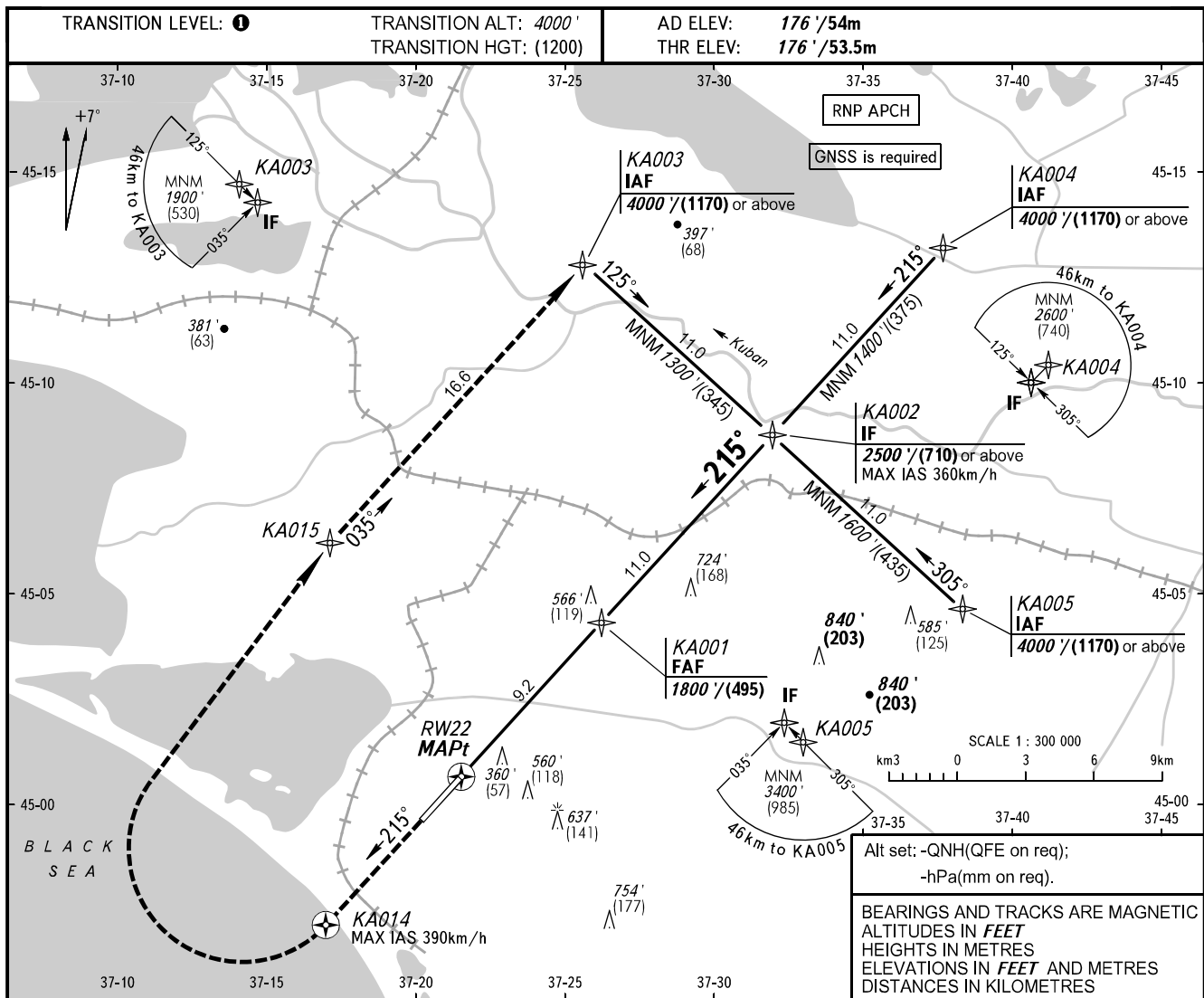


**INSTRUMENT  
APPROACH  
CHART - ICAO**

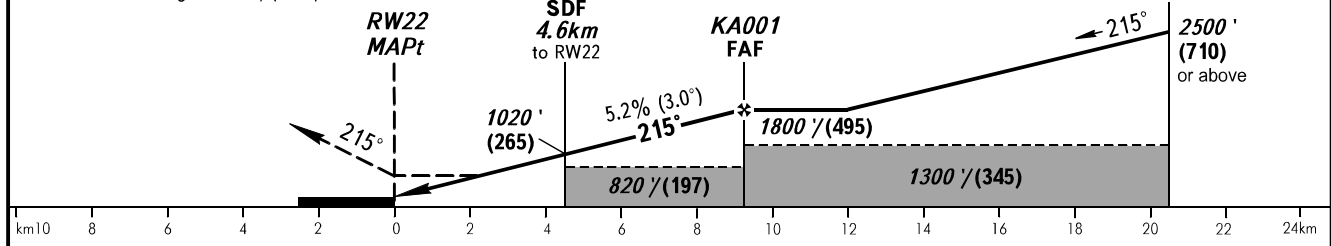
ANAPA KRUG **118.700**  
ANAPA START **119.800**

**ANAPA, RUSSIA**  
VITYAZEVO  
RNP RWY 22



**MISSED APPROACH**

Climb on track 215° to KA014, turn RIGHT to KA015, then proceed to KA003 climbing to 4000' / (1170) or above.



| OCA(H)      |             | A                    | B                    | C                     | D                     |
|-------------|-------------|----------------------|----------------------|-----------------------|-----------------------|
| Straight-in | <b>LNAV</b> | 590' (410')<br>(127) | 590' (410')<br>(127) | 590' (410')<br>(127)  | 590' (410')<br>(127)  |
|             | Approach    |                      |                      |                       |                       |
| Circling    |             | 860' (680')<br>(220) | 940' (760')<br>(245) | 1040' (860')<br>(275) | 1150' (980')<br>(310) |

**1** **TRANSITION LEVEL:**  
- FL050 when QNH is 1013 hPa (760mm mercury column) or above;  
- FL060 when QNH is less than 1013 hPa (760mm mercury column).

**WARNING**  
MAPt at RW22.  
Timing not authorized for defining MAPt.

|                 |        |     |     |     |     |     |     |     |      |      |
|-----------------|--------|-----|-----|-----|-----|-----|-----|-----|------|------|
| GROUND SPEED    | km/h   | 150 | 180 | 210 | 240 | 270 | 300 | 330 | 360  | 390  |
| RATE OF DESCENT | m/s    | 2.2 | 2.6 | 3.0 | 3.5 | 3.9 | 4.3 | 4.8 | 5.2  | 5.6  |
|                 | ft/min | 427 | 512 | 597 | 682 | 768 | 853 | 938 | 1024 | 1109 |