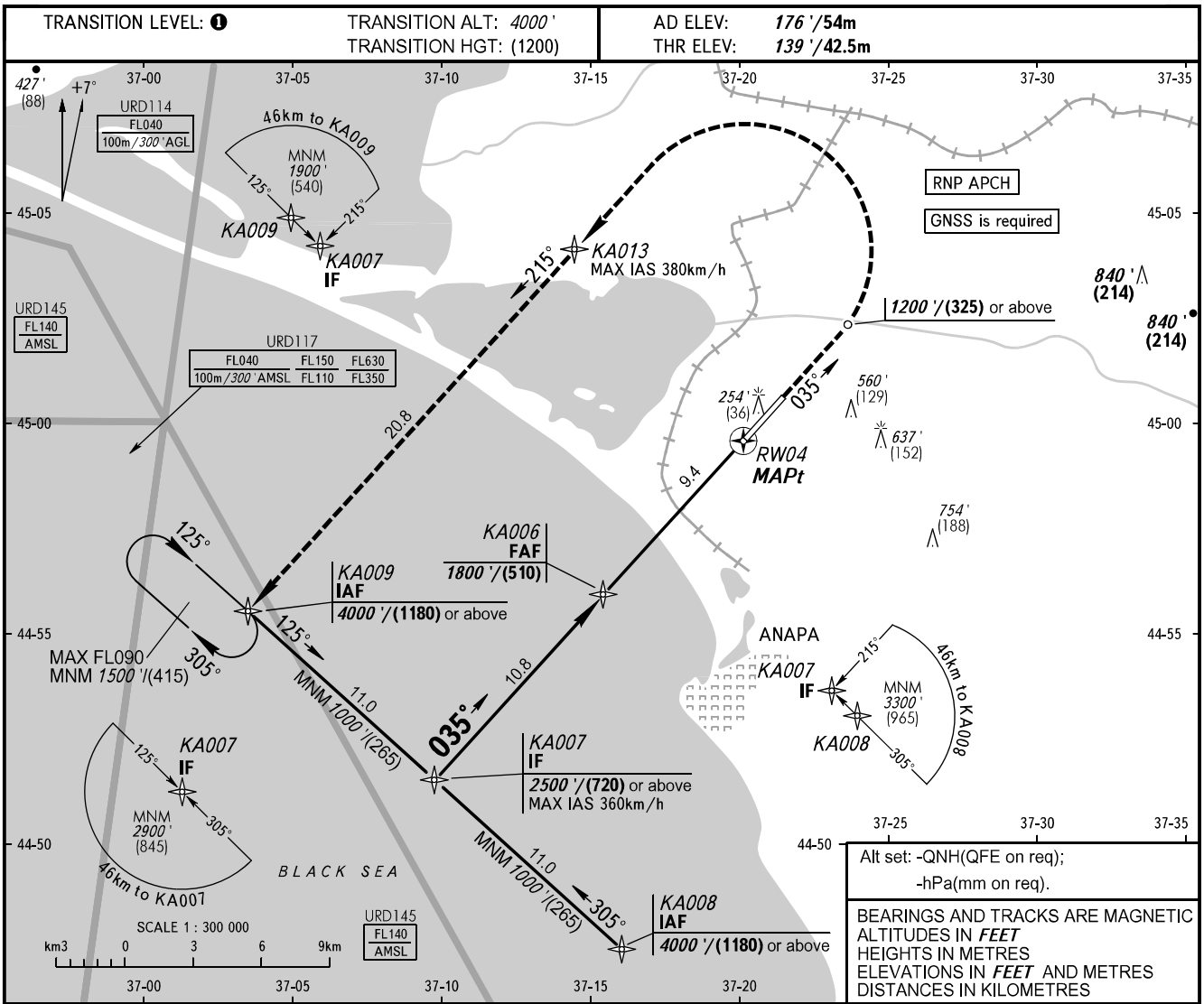


**INSTRUMENT
APPROACH
CHART - ICAO**

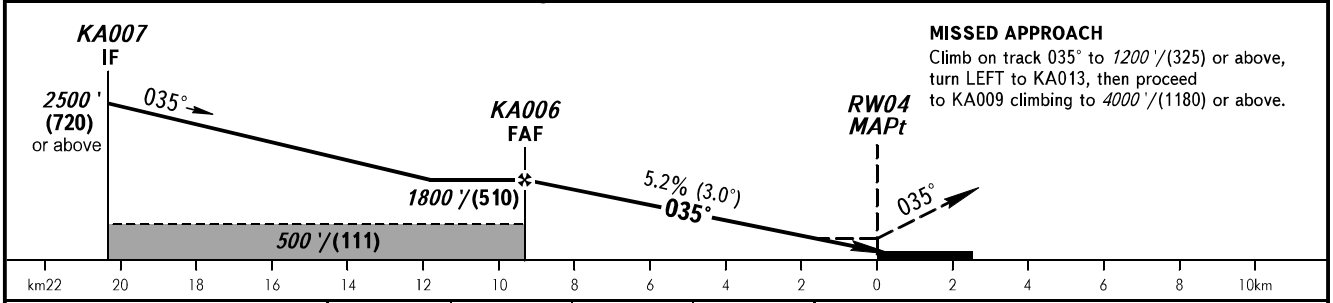
ANAPA KRUG **118.700**
ANAPA START **119.800**

ANAPA, RUSSIA
VITYAZEVO
RNP RWY 04



Alt set: -QNH(QFE on req);
-hPa(mm on req).

BEARINGS AND TRACKS ARE MAGNETIC
ALTITUDES IN FEET
HEIGHTS IN METRES
ELEVATIONS IN FEET AND METRES
DISTANCES IN KILOMETRES



MISSED APPROACH
Climb on track 035° to 1200' / (325) or above, turn LEFT to KA013, then proceed to KA009 climbing to 4000' / (1180) or above.

OCA(H)		A	B	C	D
Straight-in	LNAV	470' (330') (101)	470' (330') (101)	470' (330') (101)	470' (330') (101)
	Approach				
Circling		860' (680') (220)	940' (760') (245)	1040' (860') (275)	1150' (980') (310)

1 **TRANSITION LEVEL:**
- FL050 when QNH is 1013 hPa (760mm mercury column) or above;
- FL060 when QNH is less than 1013 hPa (760mm mercury column).

WARNING
MAPt at RW04.
Timing not authorized for defining MAPt.

GROUND SPEED	km/h	150	180	210	240	270	300	330	360	390
RATE OF DESCENT	m/s	2.2	2.6	3.0	3.5	3.9	4.3	4.8	5.2	5.6
	ft/min	427	512	597	682	768	853	938	1024	1109

CHANGE: New chart