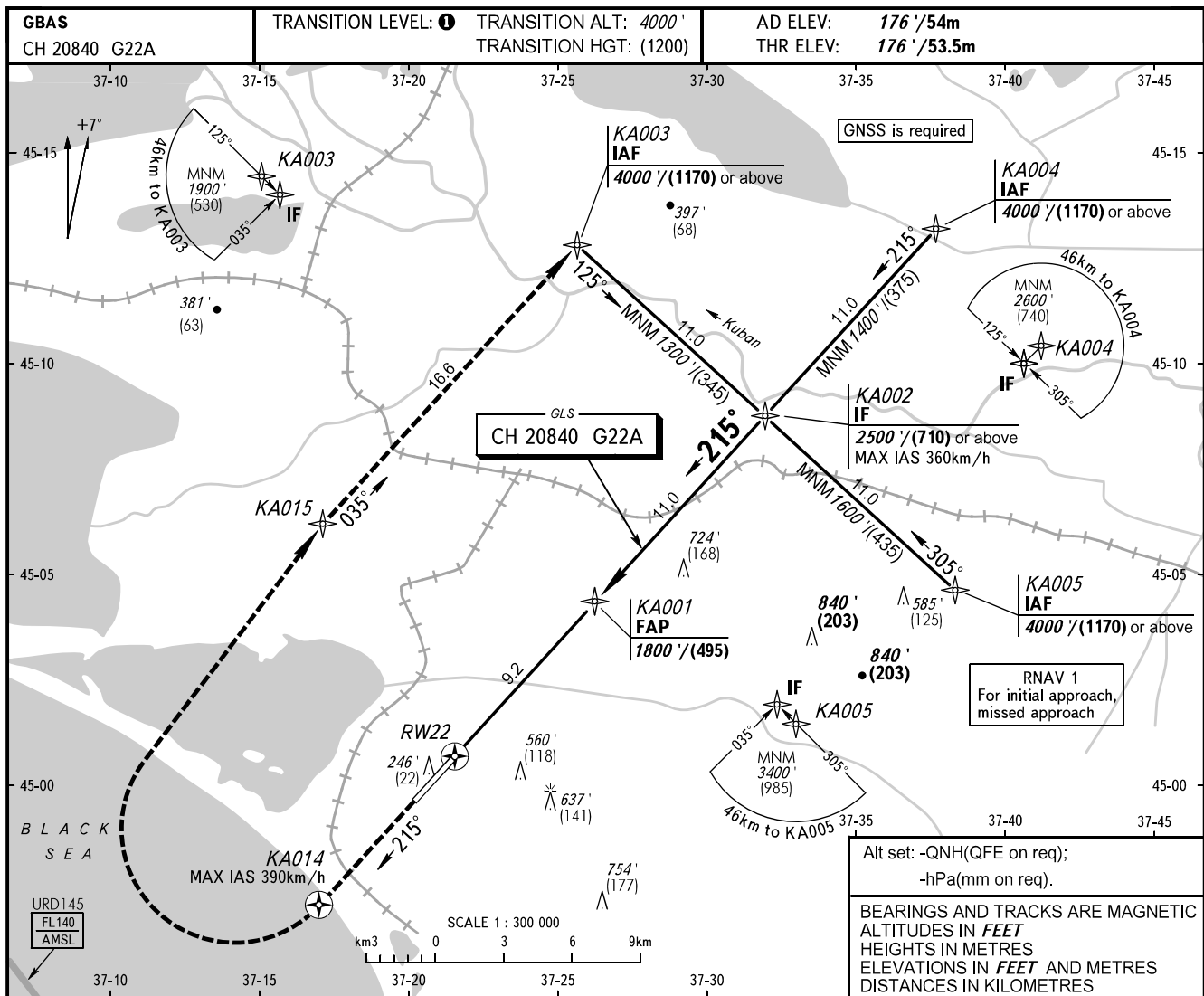


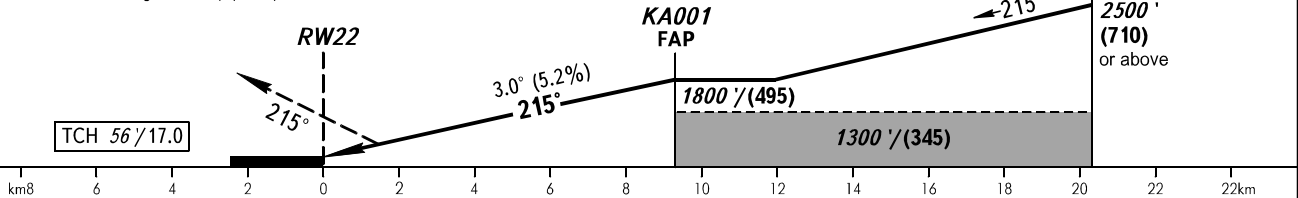
**INSTRUMENT
APPROACH
CHART - ICAO**

ANAPA, RUSSIA
VITYAZEVO
GLS RWY 22

ANAPA START **119.800**
ANAPA KRUG **118.700**



Climb on track 215° to KA014, turn RIGHT to KA015, then proceed to KA003 climbing to 4000' (1170) or above.



OCA(H)		A	B	C	D	① TRANSITION LEVEL: - FL050 when QNH is 1013 hPa (760mm mercury column) or above; - FL060 when QNH is less than 1013 hPa (760mm mercury column).					
Straight-in	CAT I	337' (161') (50)	349' (173') (53)	357' (181') (56)	368' (192') (59)						
	Approach										
Circling		860' (680') (220)	940' (760') (245)	1040' (860') (275)	1150' (980') (310)						
GROUND SPEED		km/h	150	180	210	240	270	300	330	360	390
RATE OF DESCENT		m/s	2.2	2.6	3.0	3.5	3.9	4.3	4.8	5.2	5.6
		ft/min	427	512	597	682	768	853	938	1024	1109