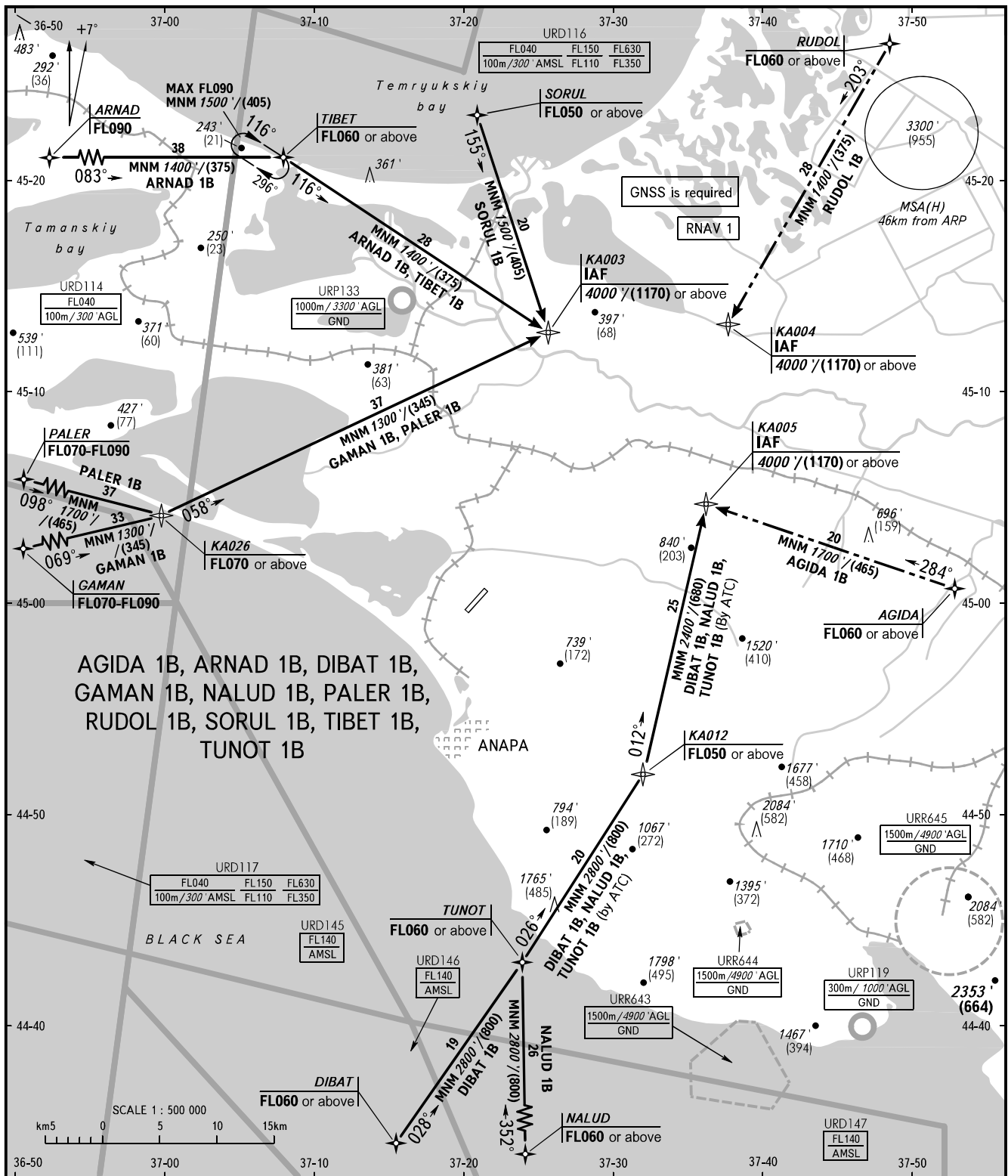


STANDARD ARRIVAL CHART
INSTRUMENT (STAR) - ICAO

ANAPA, RUSSIA
VITYAZEVO
RNAV RWY 22

TRANSITION
LEVEL: ①



AGIDA 1B, ARNAD 1B, DIBAT 1B,
GAMAN 1B, NALUD 1B, PALER 1B,
RUDOL 1B, SORUL 1B, TIBET 1B,
TUNOT 1B

ANAPA KRUG 118.700
ANAPA START 119.800

① TRANSITION LEVEL:
- FL050 when QNH is 1013 hPa (760mm mercury column)
or above;
- FL060 when QNH is less than 1013 hPa (760mm mercury column).

BEARINGS AND TRACKS ARE MAGNETIC
ALTITUDES IN FEET
HEIGHTS IN METRES
ELEVATIONS IN FEET AND METRES
DISTANCES IN KILOMETRES

Alt set: -QNH(QFE on req);
-hPa(mm on req).