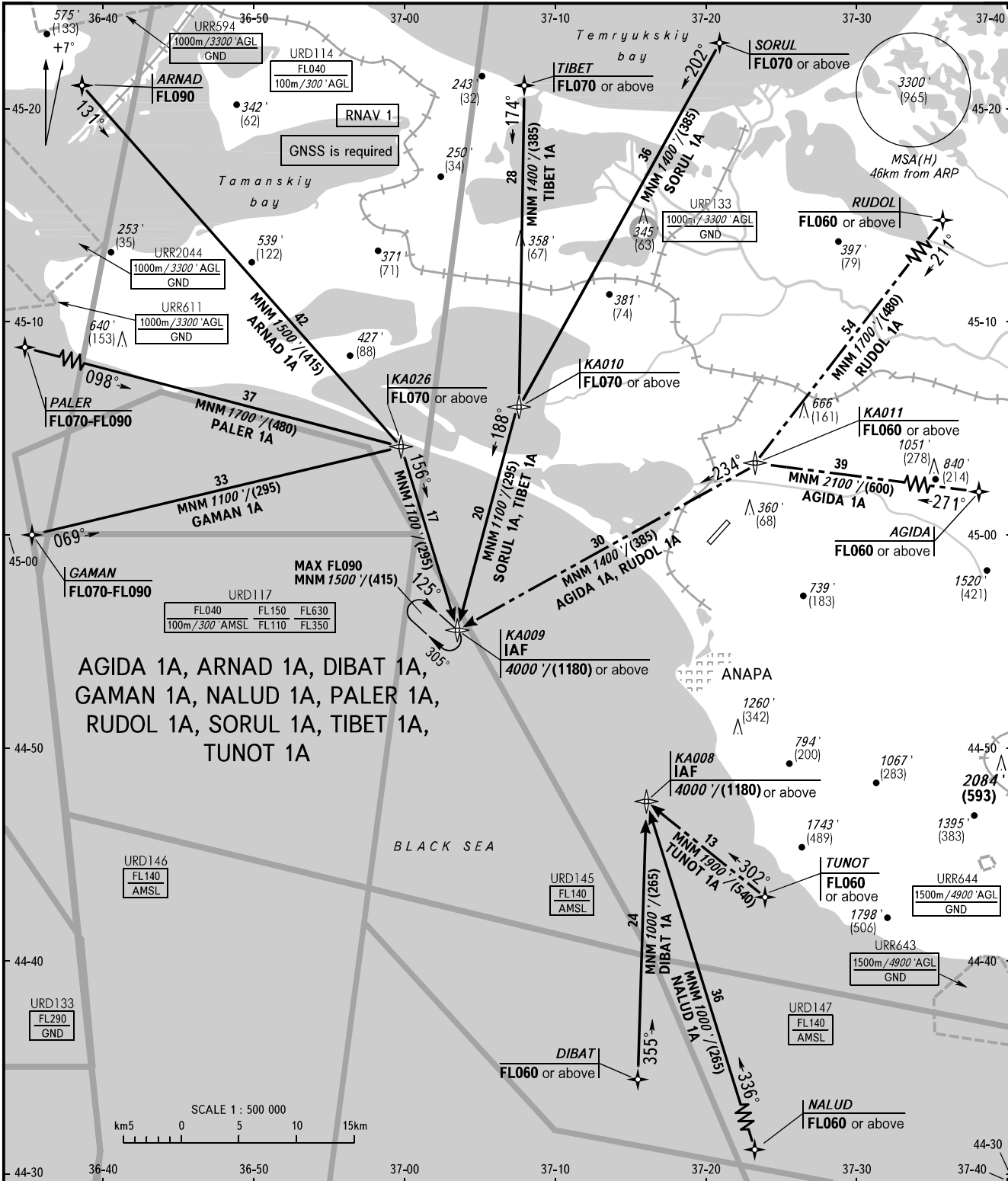


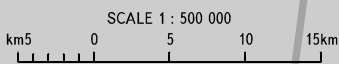
STANDARD ARRIVAL CHART
INSTRUMENT (STAR) - ICAO

TRANSITION
LEVEL: **1**

ANAPA, RUSSIA
VITYAZEVO
RNAV RWY 04



AGIDA 1A, ARNAD 1A, DIBAT 1A,
GAMAN 1A, NALUD 1A, PALER 1A,
RUDOL 1A, SORUL 1A, TIBET 1A,
TUNOT 1A



ANAPA KRUG **118.700**
ANAPA START **119.800**

1 TRANSITION LEVEL:
- FL050 when QNH is 1013 hPa (760mm mercury column) or above;
- FL060 when QNH is less than 1013 hPa (760mm mercury column).

BEARINGS AND TRACKS ARE MAGNETIC
ALTITUDES IN FEET
HEIGHTS IN METRES
ELEVATIONS IN FEET AND METRES
DISTANCES IN KILOMETRES

Alt set: -QNH(QFE on req);
-hPa(mm on req).

CHANGE: New chart