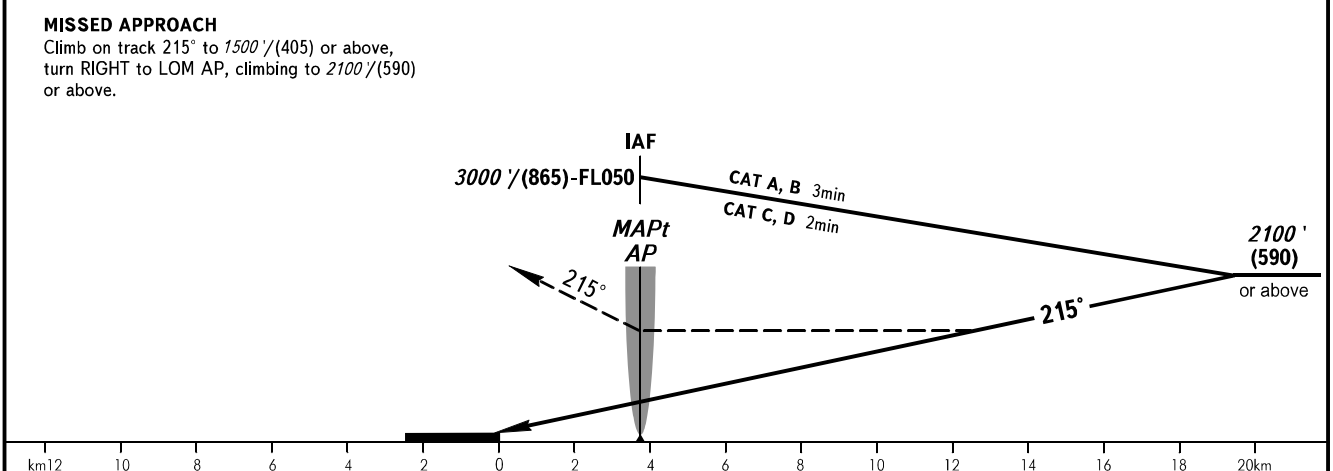
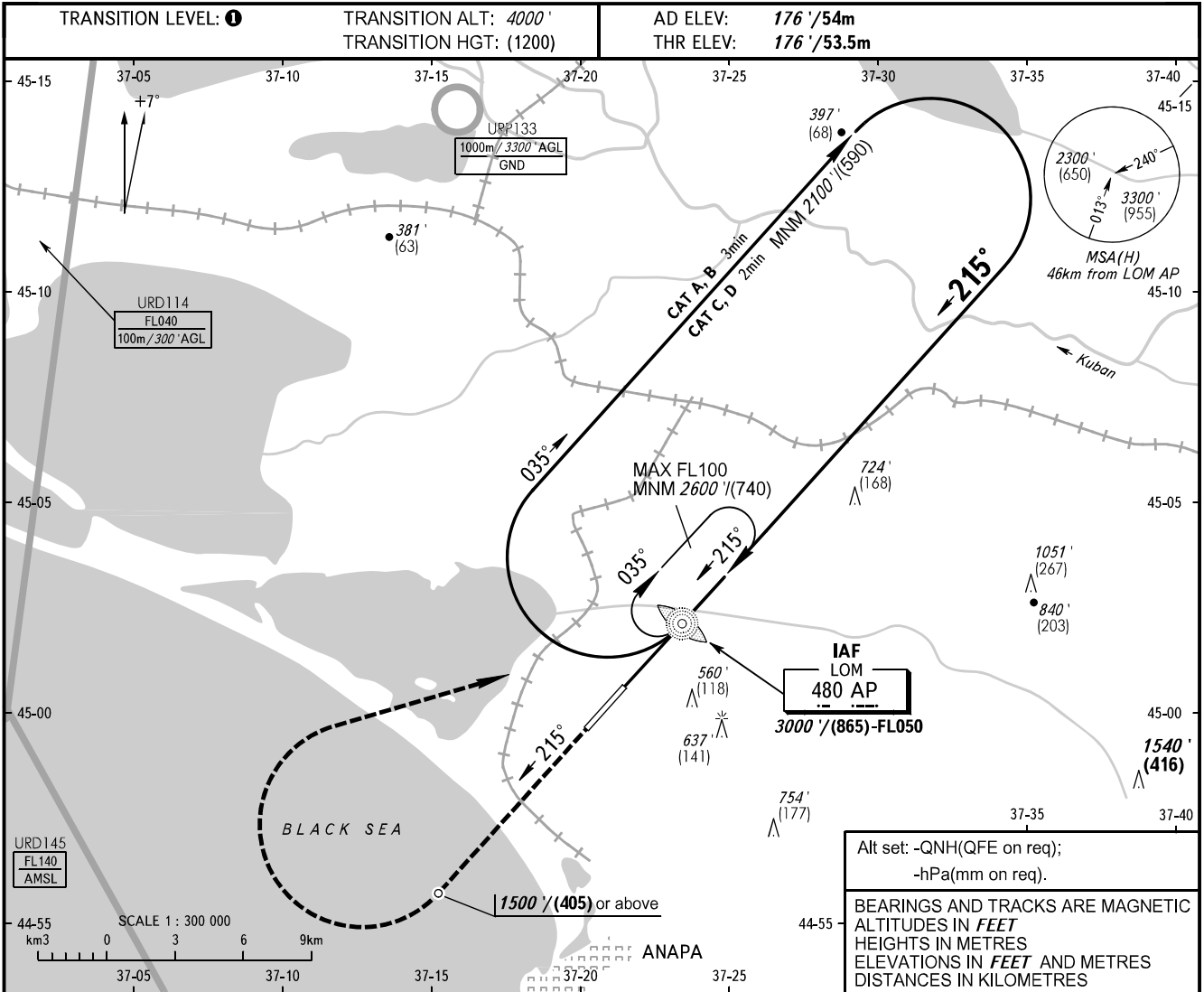


**INSTRUMENT
APPROACH
CHART - ICAO**

ANAPA KRUG	118.700
ANAPA START	119.800

**ANAPA, RUSSIA
VITYAZEVO
NDB B RWY 22**



OCA(H)		A	B	C	D
Straight-in	Approach	NOT AVBL			
Circling		860' (680') (220)	940' (760') (245)	1040' (860') (275)	1150' (980') (310)

1 TRANSITION LEVEL:
- FL050 when QNH is 1013 hPa (760mm mercury column) or above;
- FL060 when QNH is less than 1013 hPa (760mm mercury column).

WARNING
Turn before MAPt is PROHIBITED.
MAPt at LOM AP.
Timing not authorized for defining MAPt.

CHANGE: New chart