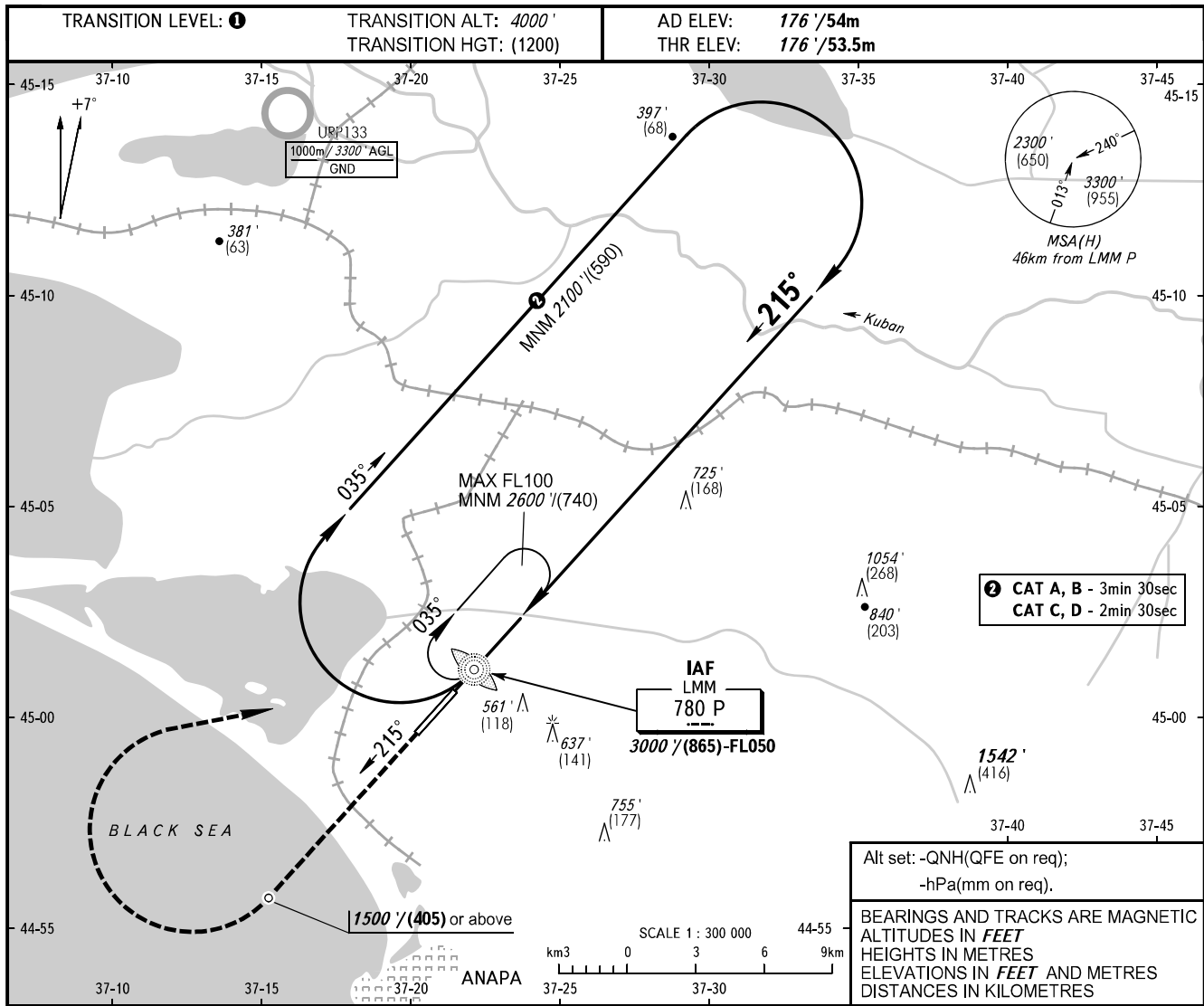


**INSTRUMENT  
APPROACH  
CHART - ICAO**

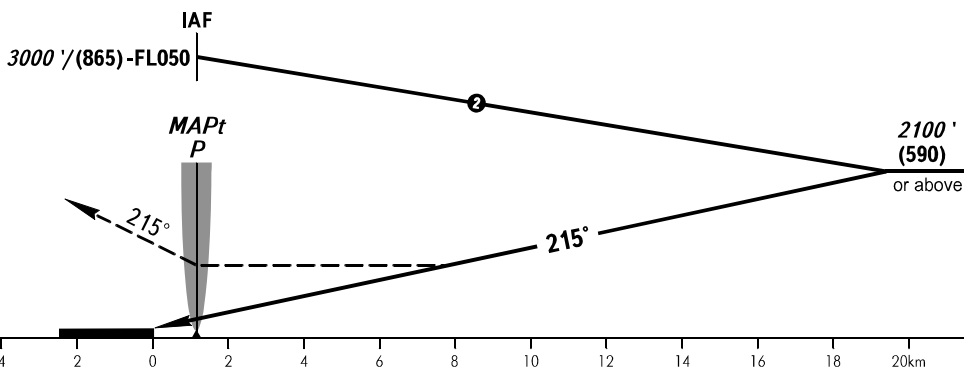
ANAPA KRUG **118.700**  
ANAPA START **119.800**

**ANAPA, RUSSIA**  
VITYAZEVO  
NDB X RWY 22



**MISSED APPROACH**

Climb on track 215° to 1500' / (405) or above,  
turn RIGHT to LMM P climbing to 2100' / (590)  
or above.



OCA(H)		A	B	C	D
Straight-in Approach		1020' (850') (258)	1020' (850') (258)	1020' (850') (258)	1020' (850') (258)
Circling		860' (680') (220)	940' (760') (245)	1040' (860') (275)	1150' (980') (310)

**1** TRANSITION LEVEL:  
- FL050 when QNH is 1013 hPa (760mm mercury column)  
or above;  
- FL060 when QNH is less than 1013 hPa (760mm mercury  
column).

**WARNING**  
Turn before MAPt is PROHIBITED.  
MAPt at LMM P.  
Timing not authorized for defining MAPt.