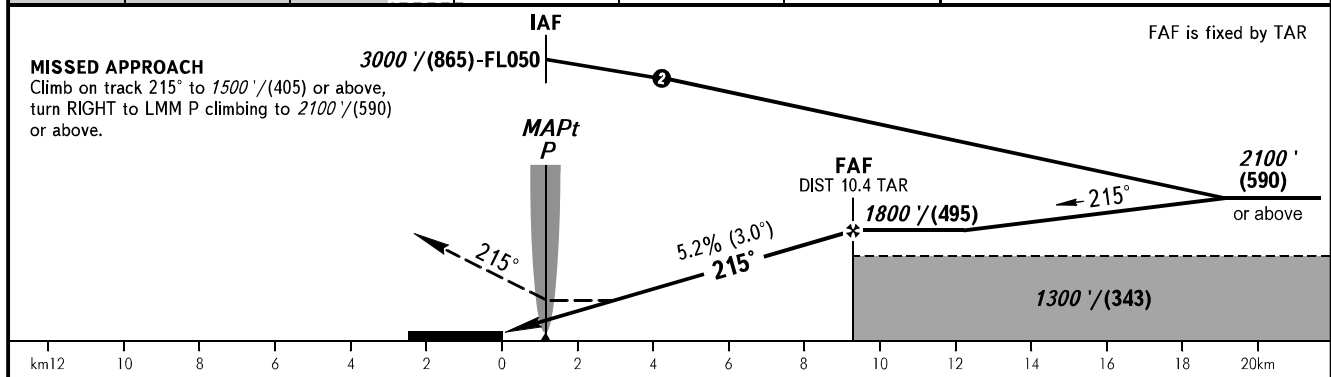
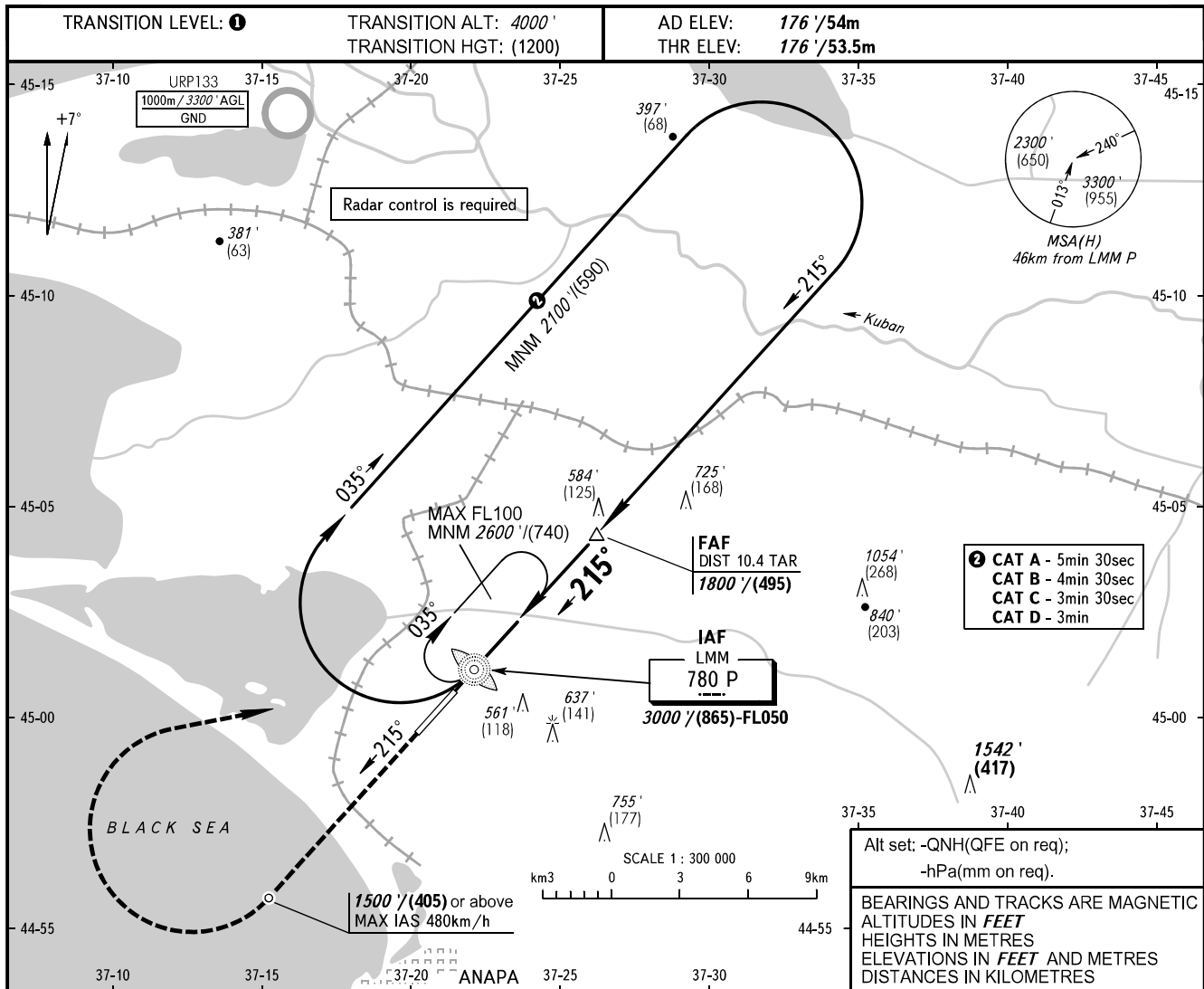


**INSTRUMENT
APPROACH
CHART - ICAO**

ANAPA KRUG **118.700**
ANAPA START **119.800**

ANAPA, RUSSIA
VITYAZEVO
NDB Y RWY 22



OCA(H)	A	B	C	D						
Straight-in	830' (660') (200)	830' (660') (200)	830' (660') (200)	830' (660') (200)						
Approach										
Circling	860' (680') (220)	940' (760') (245)	1040' (860') (275)	1150' (980') (310)						
GROUND SPEED	km/h	150	180	210	240	270	300	330	360	390
RATE OF DESCENT	m/s	2.2	2.6	3.0	3.5	3.9	4.3	4.8	5.2	5.6
	ft/min	427	512	597	682	768	853	938	1024	1109

① **TRANSITION LEVEL:**
- FL050 when QNH is 1013 hPa (760mm mercury column) or above;
- FL060 when QNH is less than 1013 hPa (760mm mercury column).

WARNING
Turn before MAPt is PROHIBITED.
MAPt at LMM P.
Timing not authorized for defining MAPt.