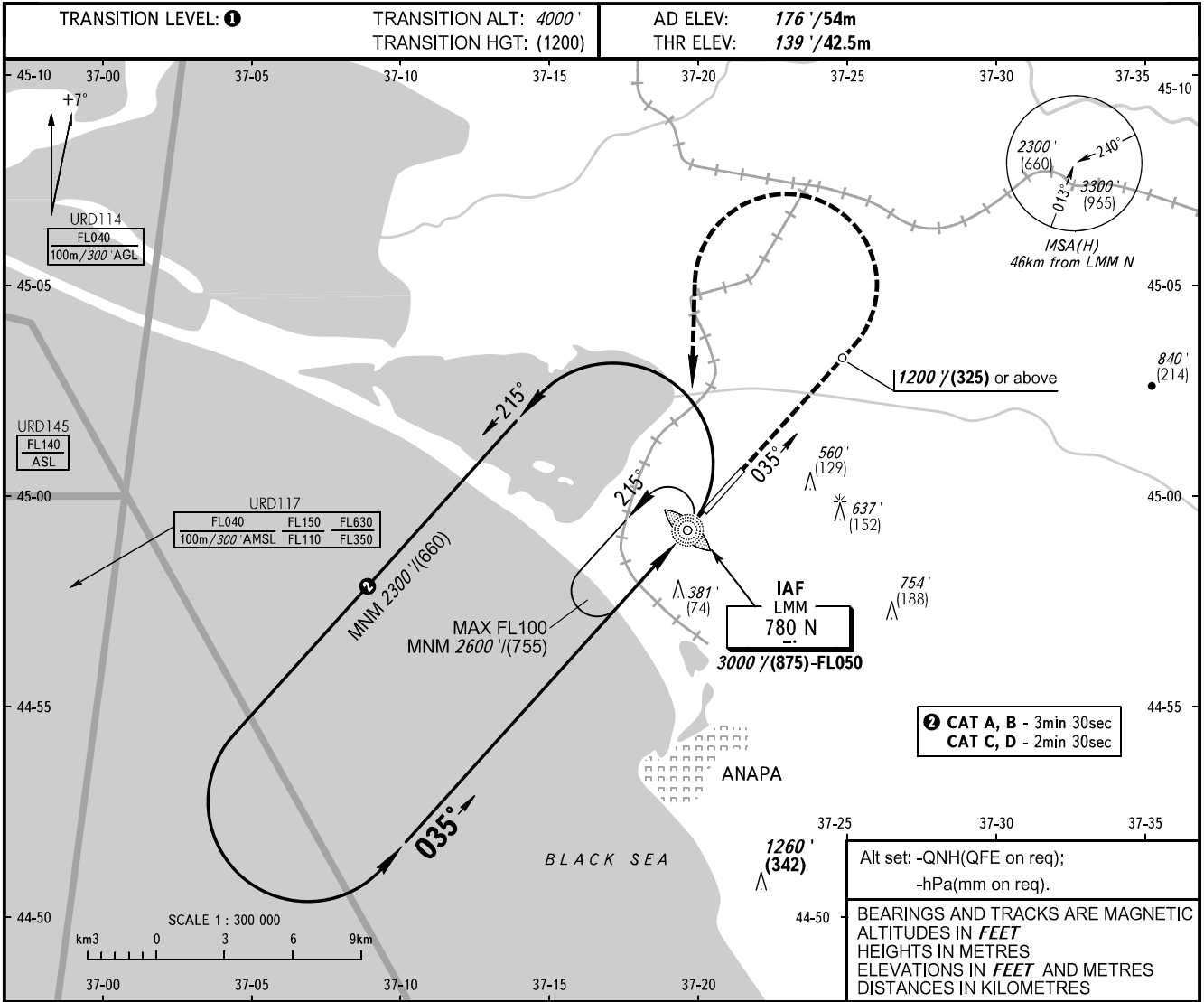


**INSTRUMENT
APPROACH
CHART - ICAO**

ANAPA KRUG	118.700
ANAPA START	119.800

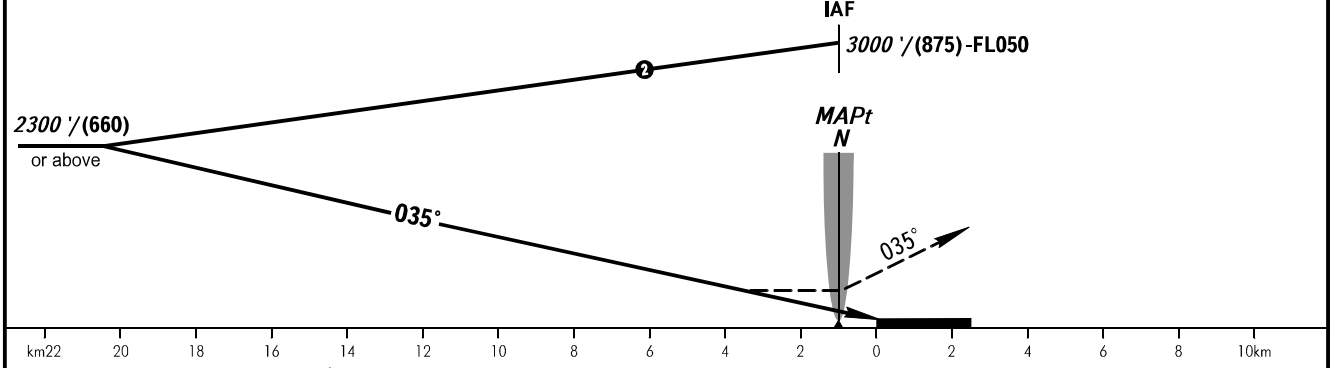
ANAPA, RUSSIA
VITYAZEVO
NDB Y RWY 04



② CAT A, B - 3min 30sec
CAT C, D - 2min 30sec

Alt set: -QNH(QFE on req);
-hPa(mm on req).
BEARINGS AND TRACKS ARE MAGNETIC
ALTITUDES IN FEET
HEIGHTS IN METRES
ELEVATIONS IN FEET AND METRES
DISTANCES IN KILOMETRES

MISSED APPROACH
Climb on track 035° to 1200' (325) or above,
turn LEFT to LMM N climbing to 2300' (660)
or above.



OCA(H)		A	B	C	D
Straight-in	Approach	610' (470') (145)	610' (470') (145)	610' (470') (145)	610' (470') (145)
	Approach				
Circling		860' (680') (220)	940' (760') (245)	1040' (860') (275)	1150' (980') (310)

① TRANSITION LEVEL:
- FLO50 when QNH is 1013 hPa (760mm mercury column) or above;
- FLO60 when QNH is less than 1013 hPa (760mm mercury column).
WARNING
Turn before MAPt is PROHIBITED.
MAPt at LMM N.
Timing not authorized for defining MAPt.

CHANGE: New chart