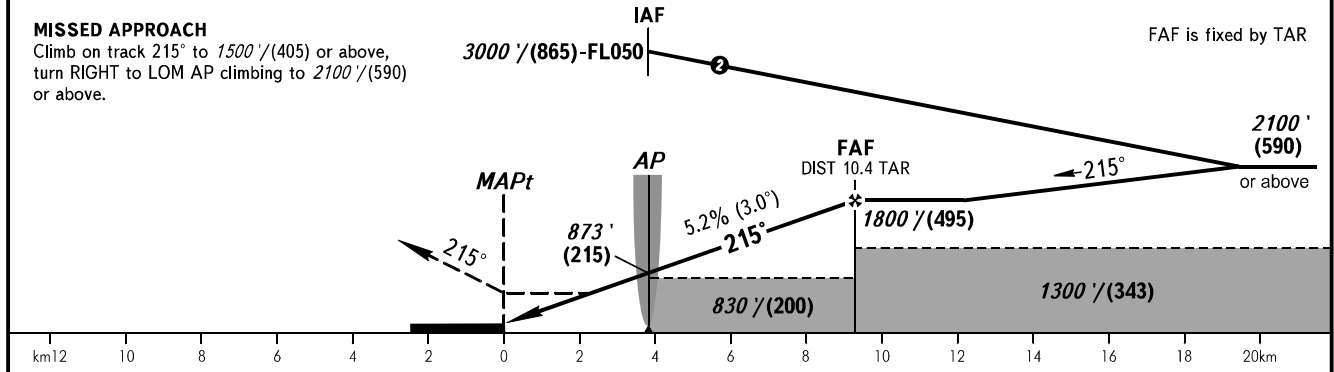
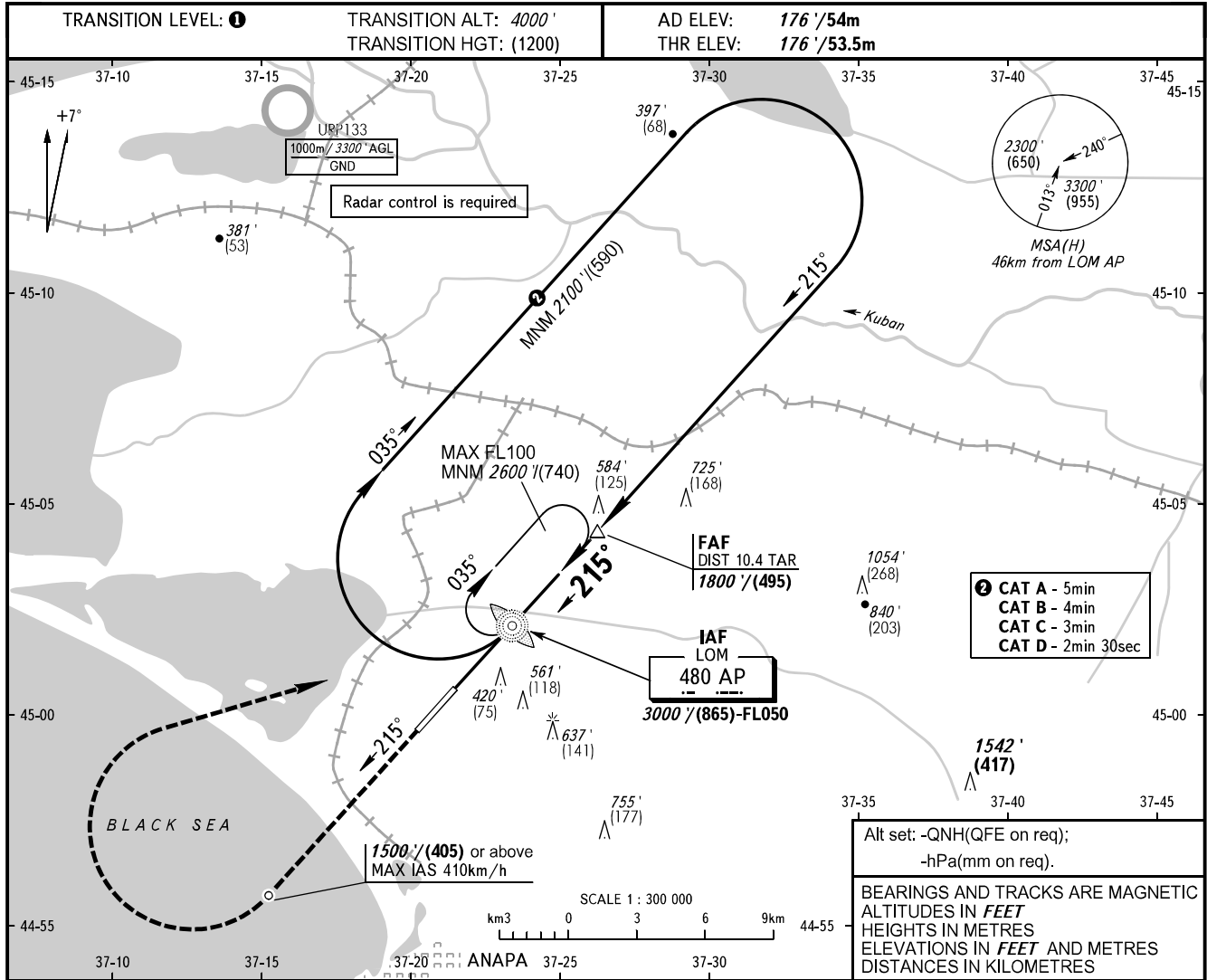


**INSTRUMENT  
APPROACH  
CHART - ICAO**

ANAPA KRUG **118.700**  
ANAPA START **119.800**

**ANAPA, RUSSIA**  
VITYAZEVO  
NDB Z RWY 22



| OCA(H)               | A                 | B                 | C                  | D                  |
|----------------------|-------------------|-------------------|--------------------|--------------------|
| Straight-in Approach | 670' (490') (151) | 670' (490') (151) | 670' (490') (151)  | 670' (490') (151)  |
| Circling             | 860' (680') (220) | 940' (760') (245) | 1040' (860') (275) | 1150' (980') (310) |

**1** TRANSITION LEVEL:  
- FL050 when QNH is 1013 hPa (760mm mercury column) or above;  
- FL060 when QNH is less than 1013 hPa (760mm mercury column).  
**WARNING**  
Turn before MAPt is PROHIBITED.

| GROUND SPEED     | km/h    | 150  | 180  | 210  | 240  | 270  | 300  | 330  | 360  | 390  |
|------------------|---------|------|------|------|------|------|------|------|------|------|
| FAF - MAPt 9300m | min:sec | 3:42 | 3:05 | 2:38 | 2:18 | 2:03 | 1:51 | 1:41 | 1:32 | 1:25 |
| RATE OF DESCENT  | m/s     | 2.2  | 2.6  | 3.0  | 3.5  | 3.9  | 4.3  | 4.8  | 5.2  | 5.6  |
|                  | ft/min  | 427  | 512  | 597  | 682  | 768  | 853  | 938  | 1024 | 1109 |