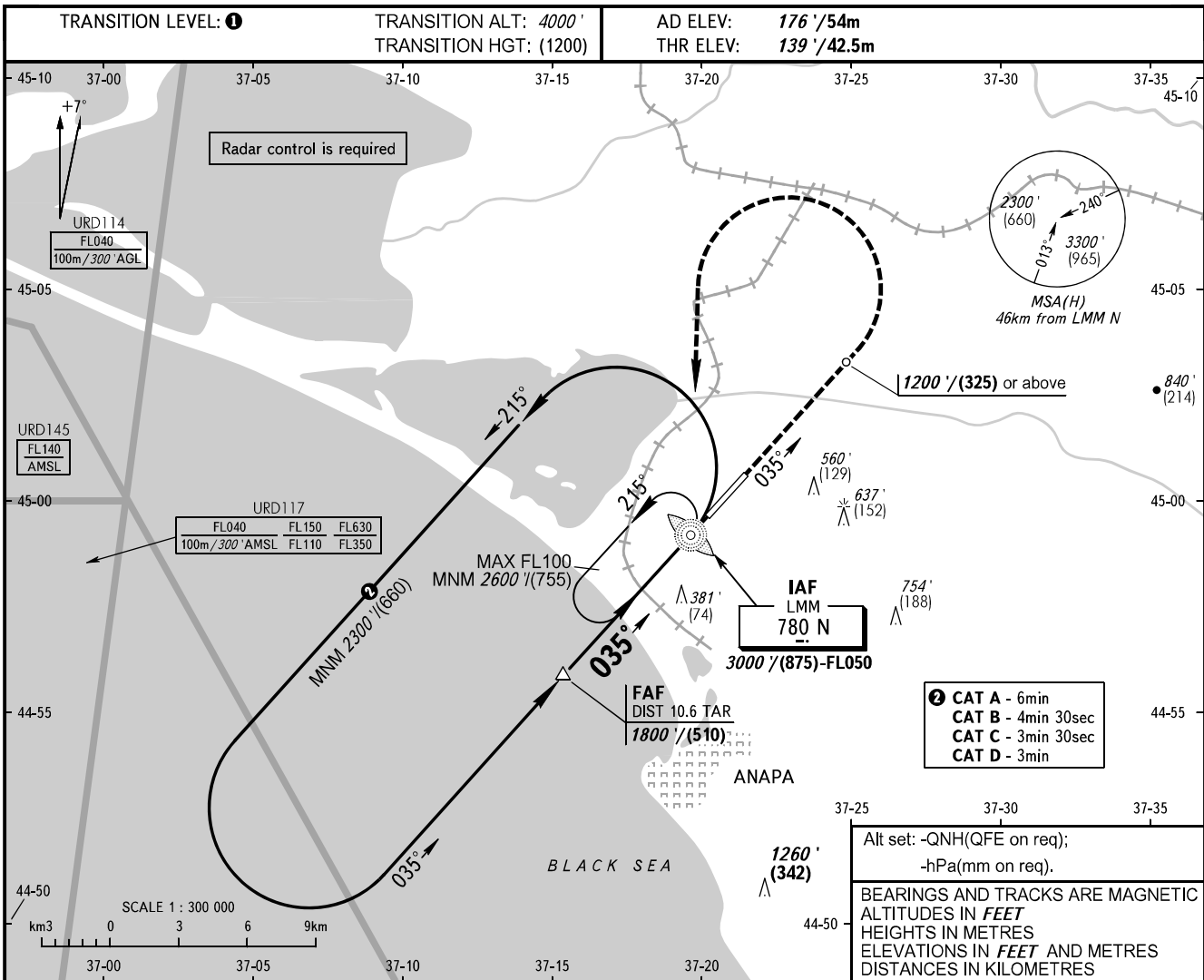


**INSTRUMENT  
APPROACH  
CHART - ICAO**

ANAPA KRUG	118.700
ANAPA START	119.800

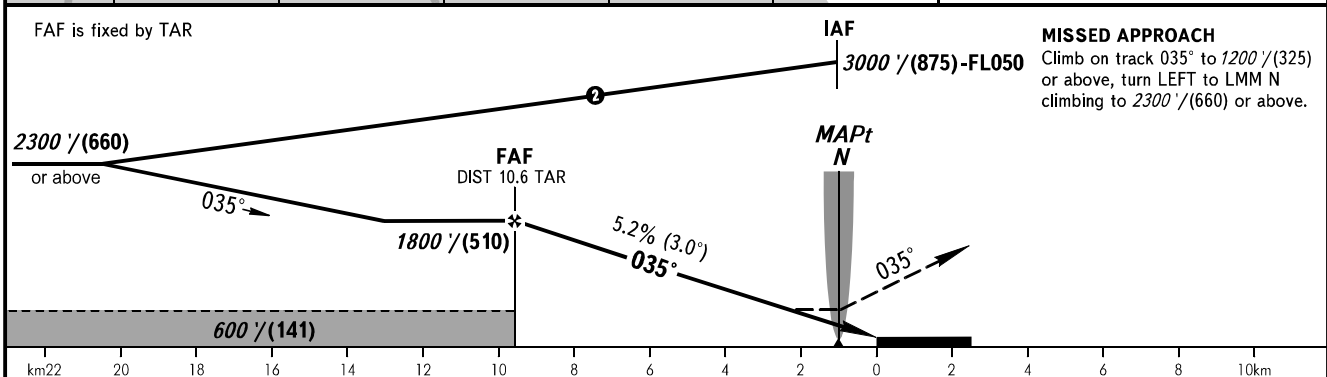
**ANAPA, RUSSIA**  
VITYAZEVO  
NDB Z RWY 04



- 2 CAT A - 6min
- CAT B - 4min 30sec
- CAT C - 3min 30sec
- CAT D - 3min

Alt set: -QNH(QFE on req);  
-hPa(mm on req).

BEARINGS AND TRACKS ARE MAGNETIC  
ALTITUDES IN FEET  
HEIGHTS IN METRES  
ELEVATIONS IN FEET AND METRES  
DISTANCES IN KILOMETRES



OCA(H)		A	B	C	D
Straight-in Approach		570' (440') (135)	570' (440') (135)	570' (440') (135)	570' (440') (135)
Circling		860' (680') (220)	940' (760') (245)	1040' (860') (275)	1150' (980') (310)

**1** TRANSITION LEVEL:  
- FL050 when QNH is 1013 hPa (760mm mercury column) or above;  
- FL060 when QNH is less than 1013 hPa (760mm mercury column).

**WARNING**  
Turn before MAPt is PROHIBITED.  
MAPt at LMM N.  
Timing is not authorized for defining MAPt.

GROUND SPEED	km/h	150	180	210	240	270	300	330	360	390
RATE OF DESCENT	m/s	2.2	2.6	3.0	3.5	3.9	4.3	4.8	5.2	5.6
	ft/min	427	512	597	682	768	853	938	1024	1109

CHANGE: New chart