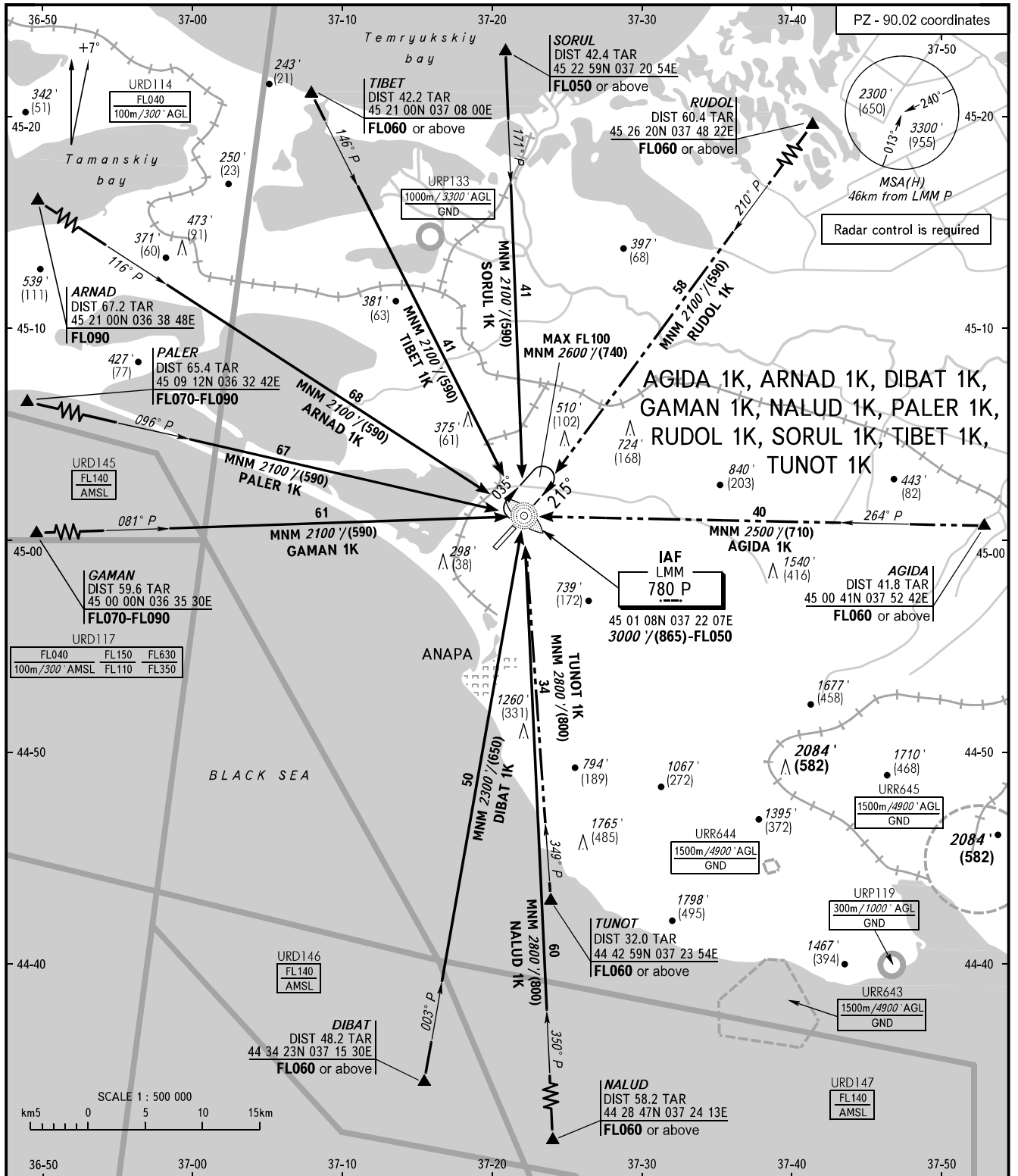


**ANAPA, RUSSIA**  
VITYAZEVO  
RWY 22

**STANDARD ARRIVAL CHART  
INSTRUMENT (STAR) - ICAO**

TRANSITION  
LEVEL: **1**



ANAPA KRUG **118.700**  
ANAPA START **119.800**

**1** TRANSITION LEVEL:  
- FL050 when QNH is 1013 hPa (760mm mercury column) or above;  
- FL060 when QNH is less than 1013 hPa (760mm mercury column).

**WARNING**  
For ARNAD 1K, GAMAN 1K and PALER 1K - descend below FL050 before 25km from ARP.

BEARINGS AND TRACKS ARE MAGNETIC  
ALTITUDES IN FEET  
HEIGHTS IN METRES  
ELEVATIONS IN FEET AND METRES  
DISTANCES IN KILOMETRES

Alt set: -QNH(QFE on req);  
-hPa(mm on req).