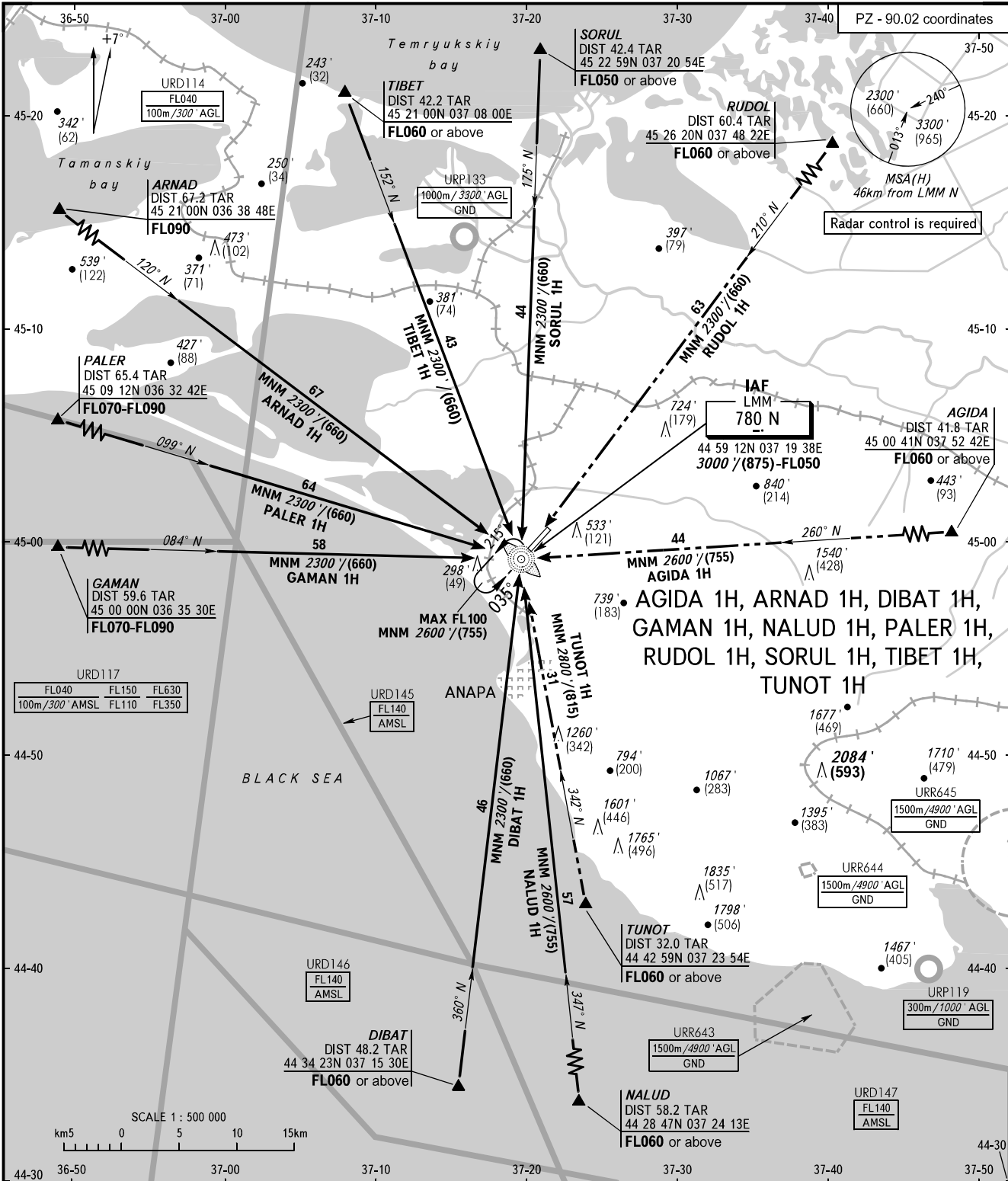


STANDARD ARRIVAL CHART
INSTRUMENT (STAR) - ICAO

ANAPA, RUSSIA
VITYAZEVO
RWY 04

TRANSITION
LEVEL: **1**



ANAPA KRUG **118.700**
ANAPA START **119.800**

1 TRANSITION LEVEL:
- FL050 when QNH is 1013 hPa (760mm mercury column) or above;
- FL060 when QNH is less than 1013 hPa (760mm mercury column).

WARNING
For ARNAD 1H, GAMAN 1H and PALER 1H - descend below FL050 before 25km from ARP.

BEARINGS AND TRACKS ARE MAGNETIC
ALTITUDES IN FEET
HEIGHTS IN METRES
ELEVATIONS IN FEET AND METRES
DISTANCES IN KILOMETRES

Alt set: -QNH(QFE on req);
-hPa(mm on req).

CHANGE: New chart