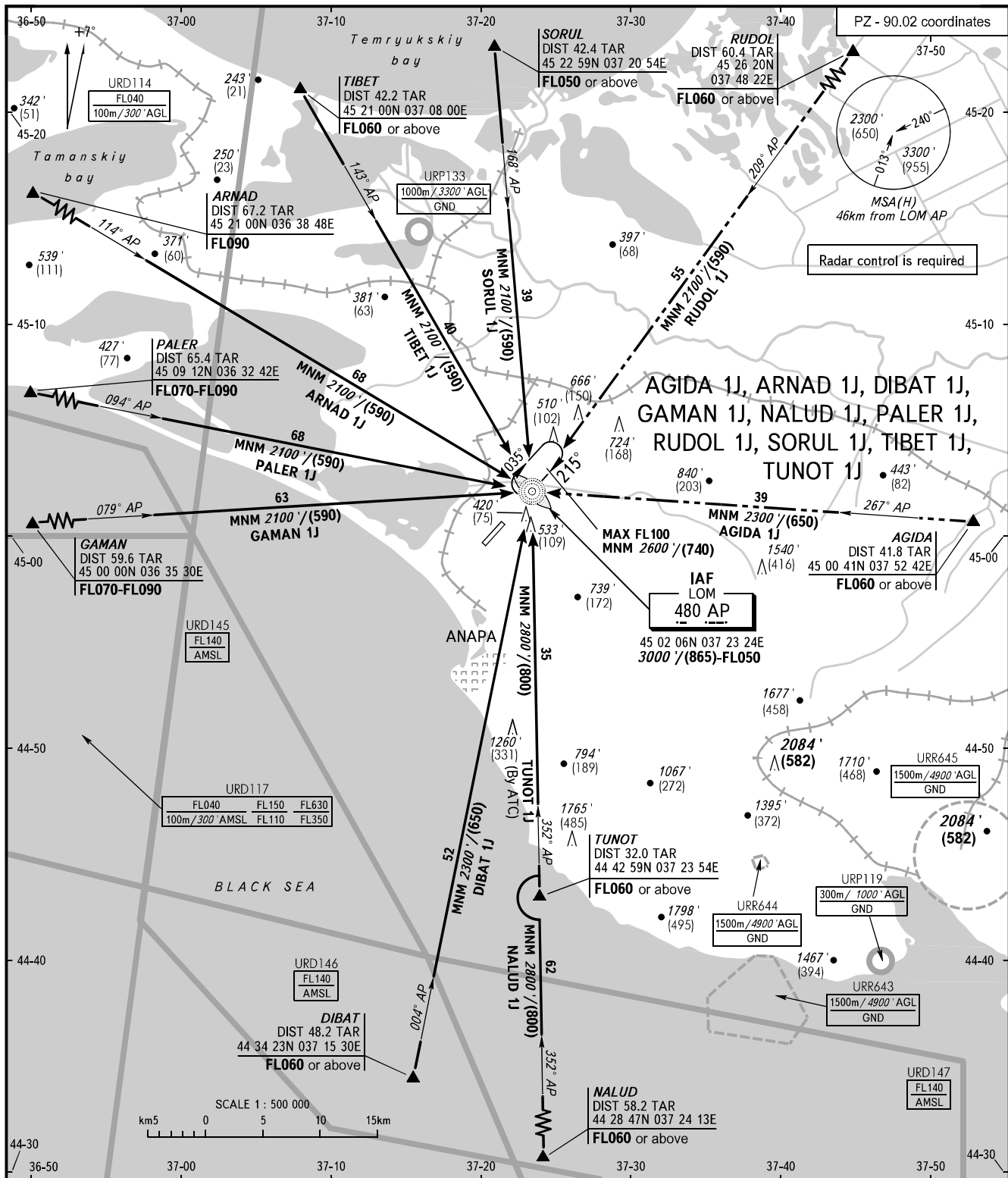


STANDARD ARRIVAL CHART  
INSTRUMENT (STAR) - ICAO

ANAPA, RUSSIA  
VITYAZEVO  
RWY 22

TRANSITION  
LEVEL: ①



ANAPA KRUG **118.700**  
ANAPA START **119.800**

① TRANSITION LEVEL:  
- FL050 when QNH is 1013 hPa (760mm mercury column) or above;  
- FL060 when QNH is less than 1013 hPa (760mm mercury column).

**WARNING**  
For ARNAD 1J, GAMAN 1J and PALER 1J - descend below FL050 before 25km from ARP.

BEARINGS AND TRACKS ARE MAGNETIC  
ALTITUDES IN FEET  
HEIGHTS IN METRES  
ELEVATIONS IN FEET AND METRES  
DISTANCES IN KILOMETRES

Alt set: -QNH(QFE on req);  
-hPa(mm on req).