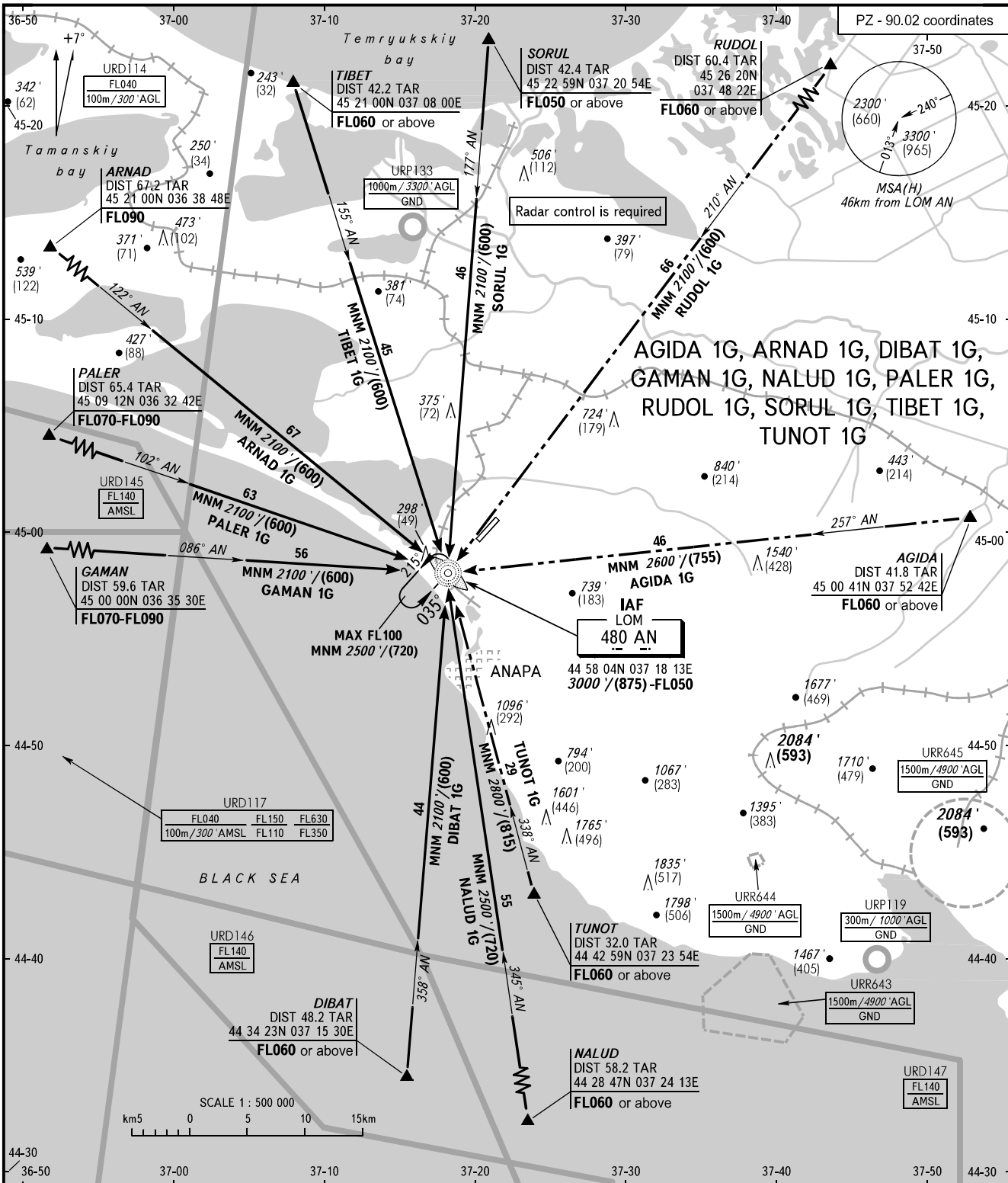


STANDARD ARRIVAL CHART
INSTRUMENT (STAR) - ICAO

ANAPA, RUSSIA
VITYAZEVO
RWY 04

TRANSITION
LEVEL : 1



ANAPA KRUG	118.700	<p>1 TRANSITION LEVEL:</p> <ul style="list-style-type: none"> - FL050 when QNH is 1013 hPa (760mm mercury column) or above; - FL060 when QNH is less than 1013 hPa (760mm mercury column). <p>WARNING For ARNAD 1G, GAMAN 1G and PALER 1G - descend below FL050 before 25km from ARP.</p>
ANAPA START	119.800	
<p>BEARINGS AND TRACKS ARE MAGNETIC ALTITUDES IN FEET HEIGHTS IN METRES ELEVATIONS IN FEET AND METRES DISTANCES IN KILOMETRES</p>		<p>Alt set: -QNH(QFE on req); -hPa(mm on req).</p>

CHANGE: New chart