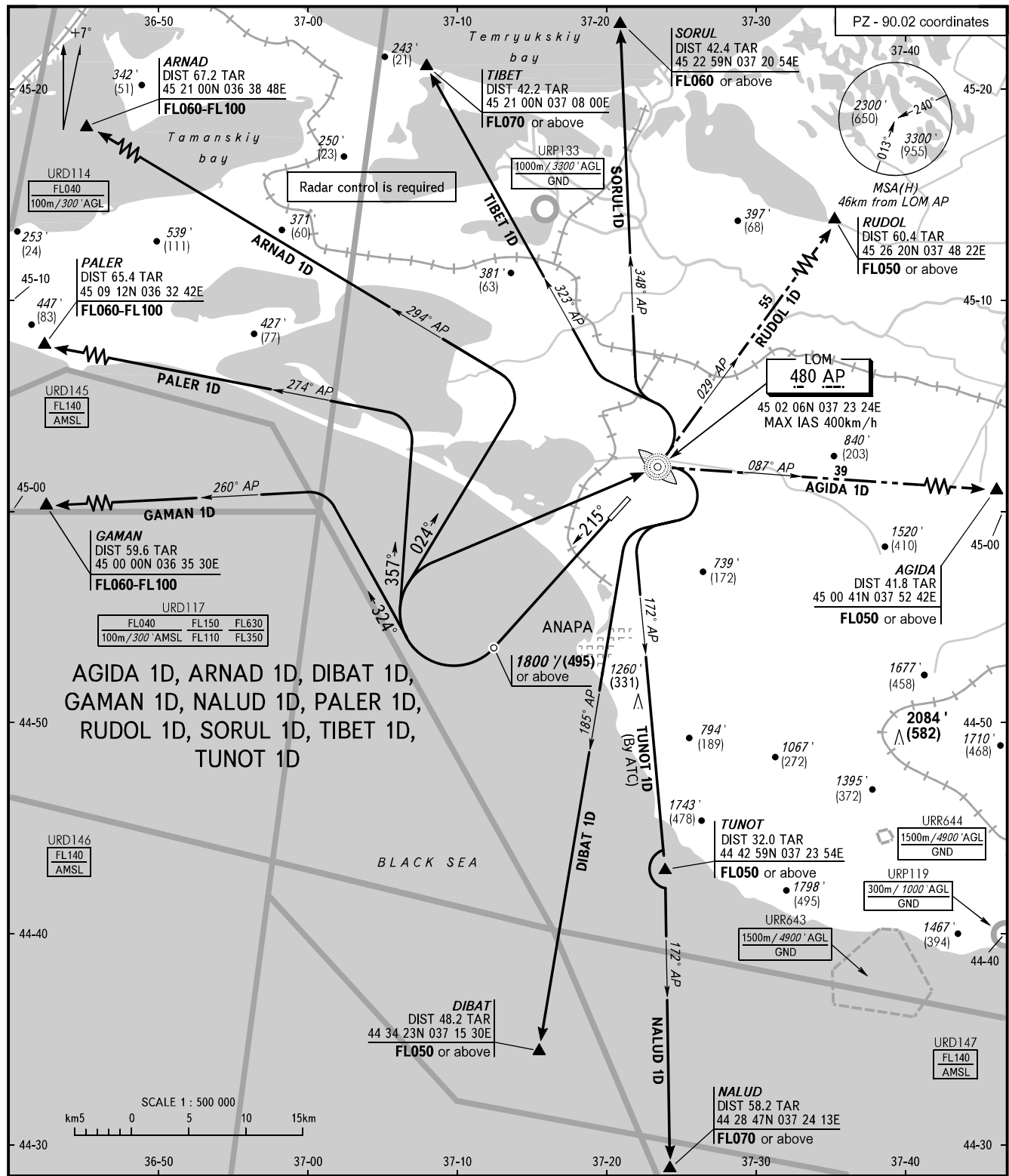


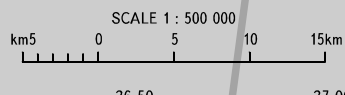
STANDARD DEPARTURE CHART INSTRUMENT (SID) - ICAO

ANAPA, RUSSIA VITYAZEVO RWY 22

TRANSITION ALT : 4000'
TRANSITION HGT :(1200)



AGIDA 1D, ARNAD 1D, DIBAT 1D,
GAMAN 1D, NALUD 1D, PALER 1D,
RUDOL 1D, SORUL 1D, TIBET 1D,
TUNOT 1D



ANAPA START	119.800
ANAPA KRUG	118.700

The minimum climb gradients required due to the airspace structure:

- 3.4% up to FL050 for SID ARNAD 1D;
- 4.7% up to FL050 for SID GAMAN 1D;
- 4.0% up to FL050 for SID PALER 1D.

WARNING:

1. Turn before DER is PROHIBITED.
2. For SID ARNAD 1D, GAMAN 1D, PALER 1D - pass DIST 25km from ARP at FL050 or above.

BEARINGS AND TRACKS ARE MAGNETIC
ALTITUDES IN **FEET**
HEIGHTS IN METRES
ELEVATIONS IN **FEET** AND METRES
DISTANCES IN KILOMETRES

Alt set: -QNH(QFE on req);
-hPa(mm on req).

CHANGE: New chart