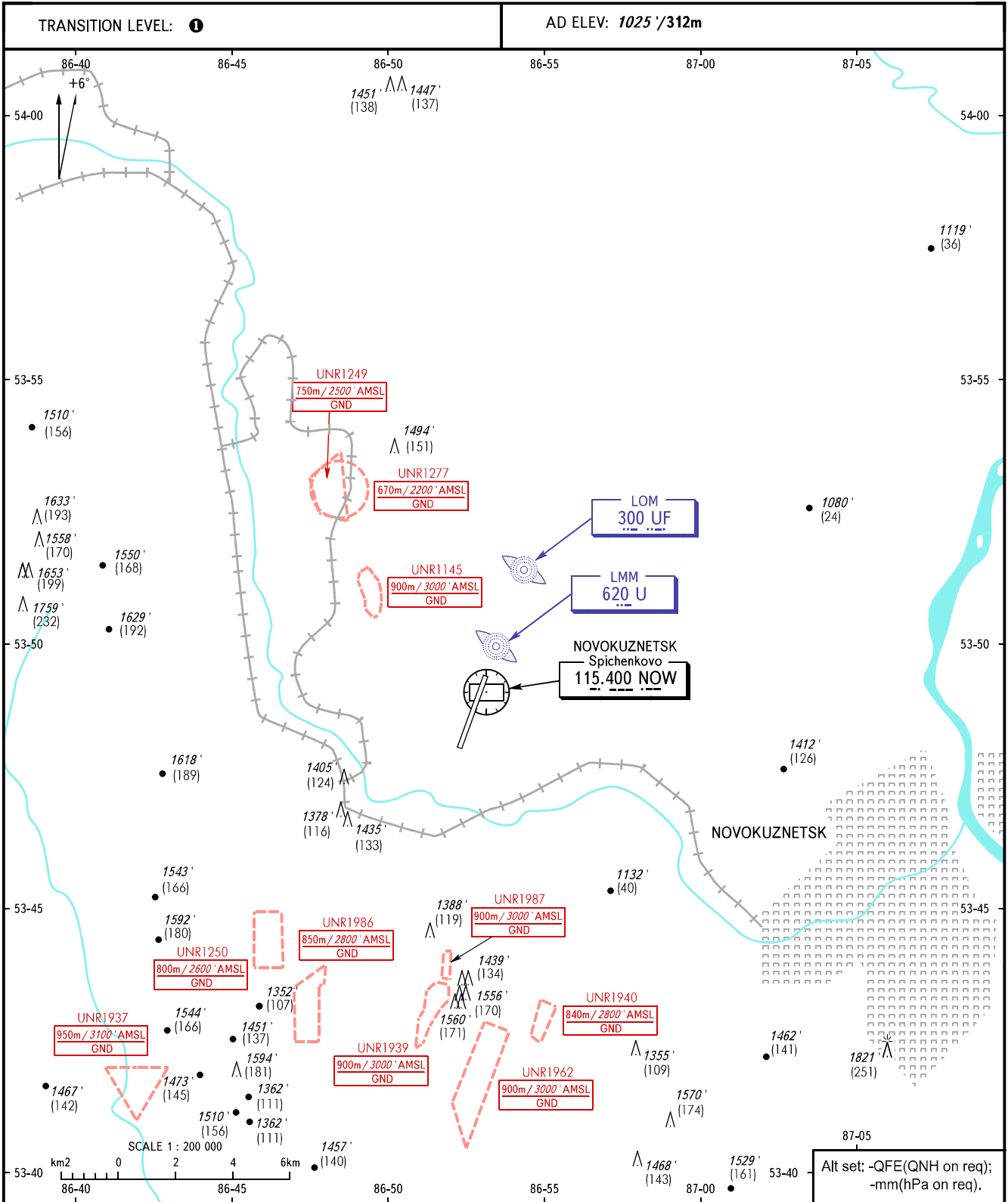


VISUAL
APPROACH
CHART - ICAO

APPROACH START	118.600 121.200
----------------	--------------------

NOVOKUZNETSK, RUSSIA
SPICHENKOVO
RWY 01/19



VISUAL APPROACH PROCEDURES:

Clearance to execute visual approach for ACFT performing IFR flight shall be requested by the flight crew or is initiated by ATS unit. In the latter case, coordination with the flight crew is required.

① TRANSITION LEVEL:

- FL050 when QNH is 1013 hPa (760mm mercury column) or above;
- FL060 when QNH is 977 hPa (733mm mercury column) or above, but less than 1013 hPa (760mm mercury column);
- FL070 when QNH is less than 977 hPa (733mm mercury column).

WARNING:

Obstacles below 1350' (410) are not shown.
Obstacle elevations in metres are given relative to RWY 19 THR.

CHANGE: New chart