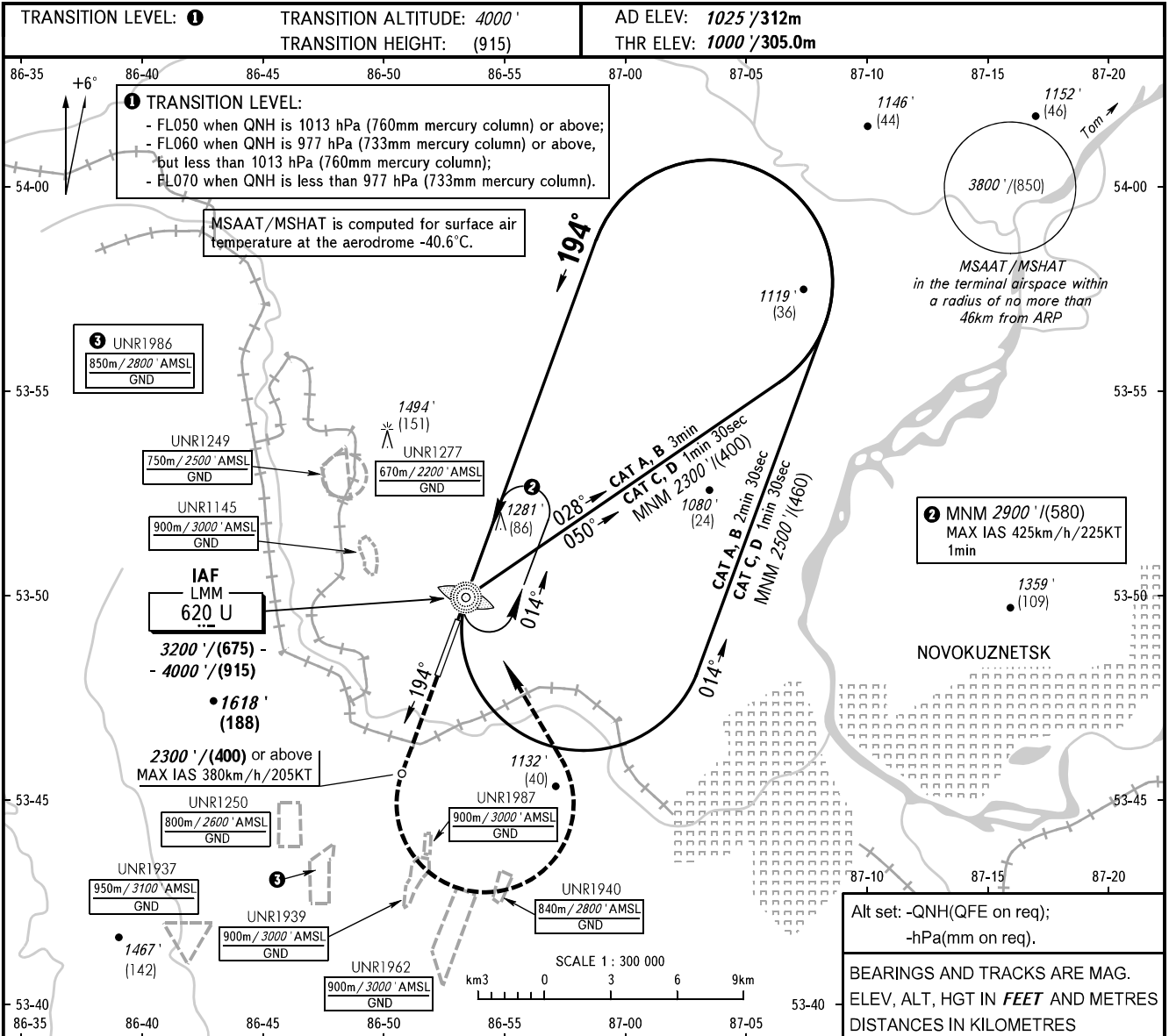


**INSTRUMENT
APPROACH
CHART - ICAO**

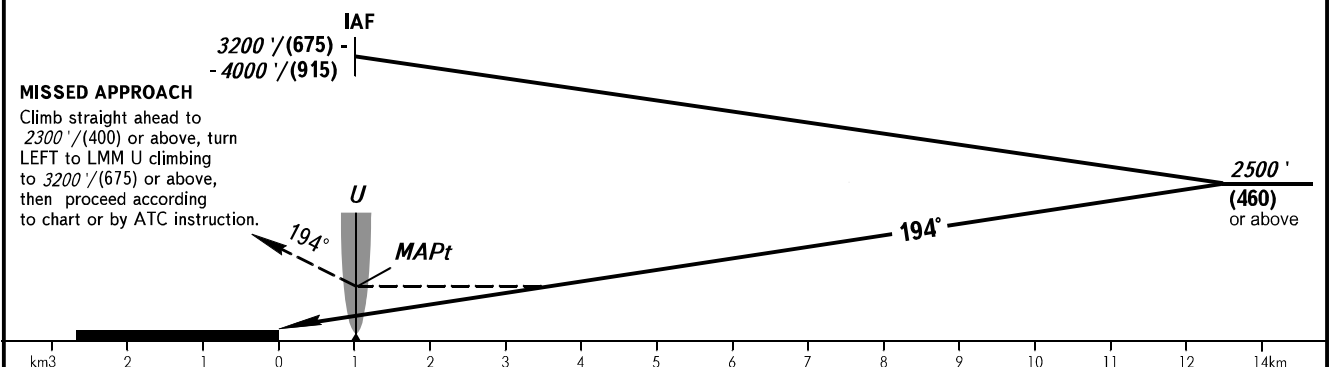
APPROACH **118.600**
START **121.200**

**NOVOKUZNETSK, RUSSIA
SPICHENKOVO
NDB Z RWY 19**



Alt set: -QNH(QFE on req);
-hPa(mm on req).

BEARINGS AND TRACKS ARE MAG.
ELEV, ALT, HGT IN *FEET* AND METRES
DISTANCES IN KILOMETRES



OCA(H)		A	B	C	D
Straight-in Approach		1580' (580') (180)	1580' (580') (180)	1580' (580') (180)	1580' (580') (180)
Circling		1580' (580') (180)	1730' (710') (220)	1830' (810') (255)	1960' (940') (295)

WARNING

1. Approach procedure is used, if clearance to cross areas UNR1250, UNR1939, UNR1940, UNR1962, UNR1986, UNR1987, when they are active, is AVBL, otherwise by arrangement with ATS unit.
2. MAPt at LMM U. Timing not authorized for defining MAPt.