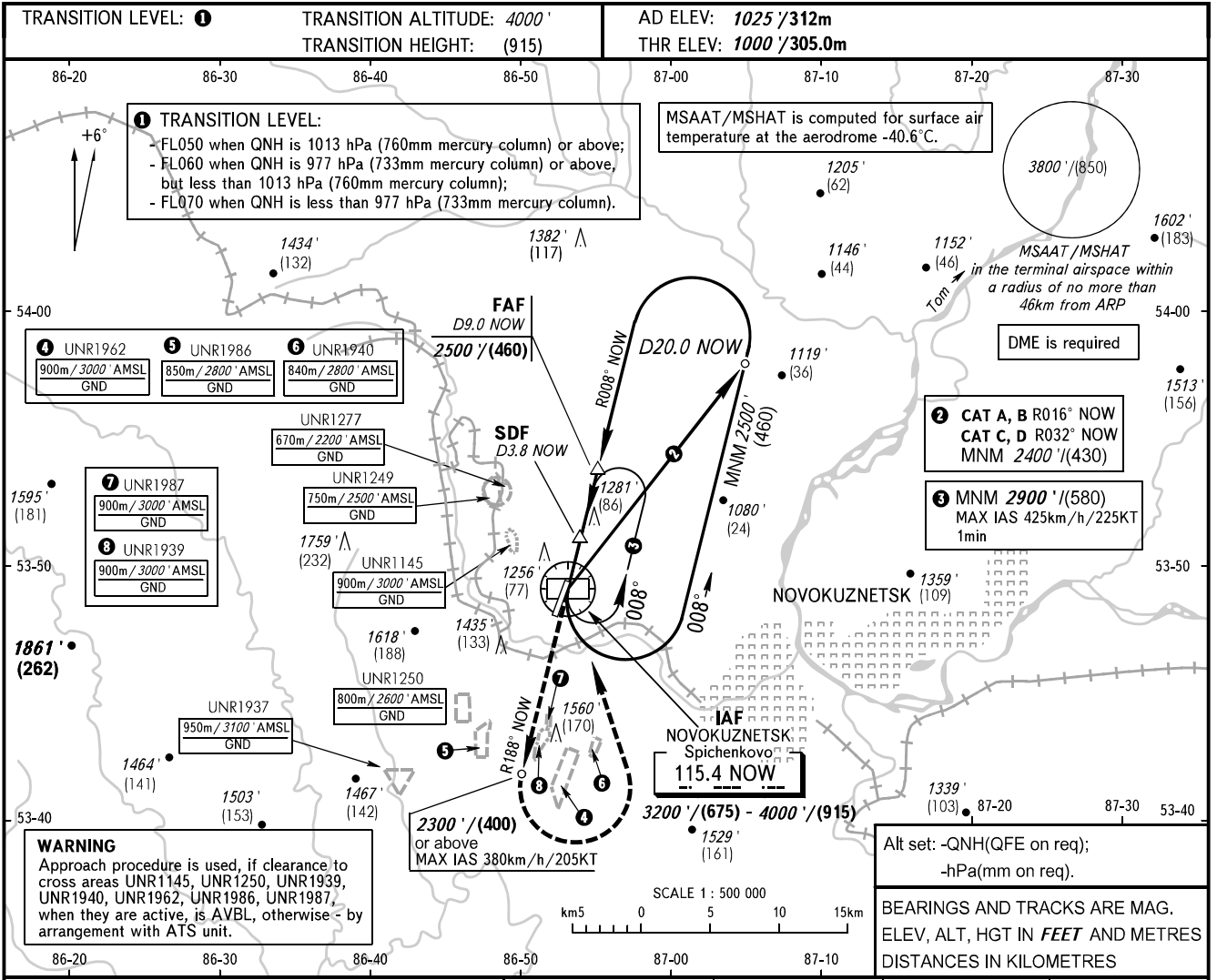


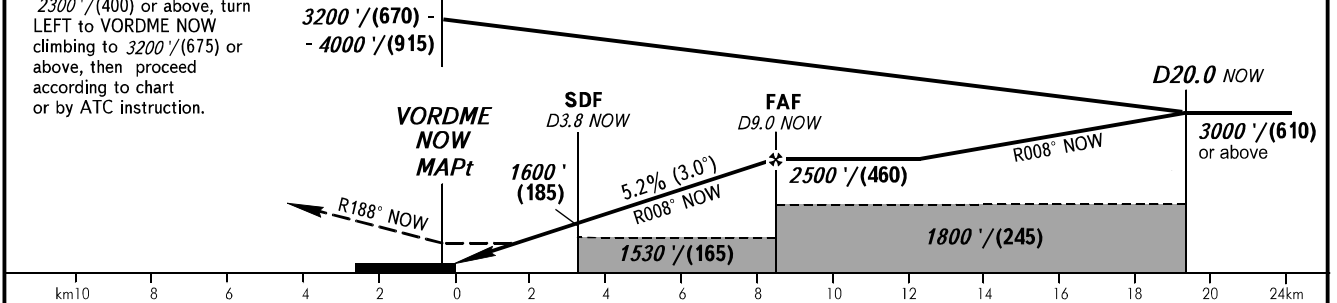
**INSTRUMENT  
APPROACH  
CHART - ICAO**

APPROACH	<b>118.600</b>
START	<b>121.200</b>

**NOVOKUZNETSK, RUSSIA  
SPICHENKOVO  
VOR RWY 19**



DME NOW	4.0	6.0	8.0
ALTITUDE/HEIGHT	1650'/(200)	1990'/(305)	2330'/(410)



OCA(H)		A	B	C	D	NOTE: 1. MAPt at VORDME NOW. Timing not authorized for defining MAPt. 2. Final approach track is offset by 6° from the RWY centre line.			
Straight-in Approach	With SDF	1430' (430') (135)	1430' (430') (135)	1430' (430') (135)	1430' (430') (135)				
	WO SDF	1530' (530') (165)	1530' (530') (165)	1530' (530') (165)	1530' (530') (165)				
Circling		1530' (530') (165)	1730' (710') (220)	1830' (810') (255)	1960' (940') (295)				
GROUND SPEED	km/h	150	180	210	240	270	300	330	360
	kt	81	97	113	130	146	162	178	195
RATE OF DESCENT	m/s	2.2	2.6	3.0	3.5	3.9	4.3	4.8	5.2
	ft/min	427	512	597	682	768	853	938	1024

CHANGE: FAF, OCA(H)