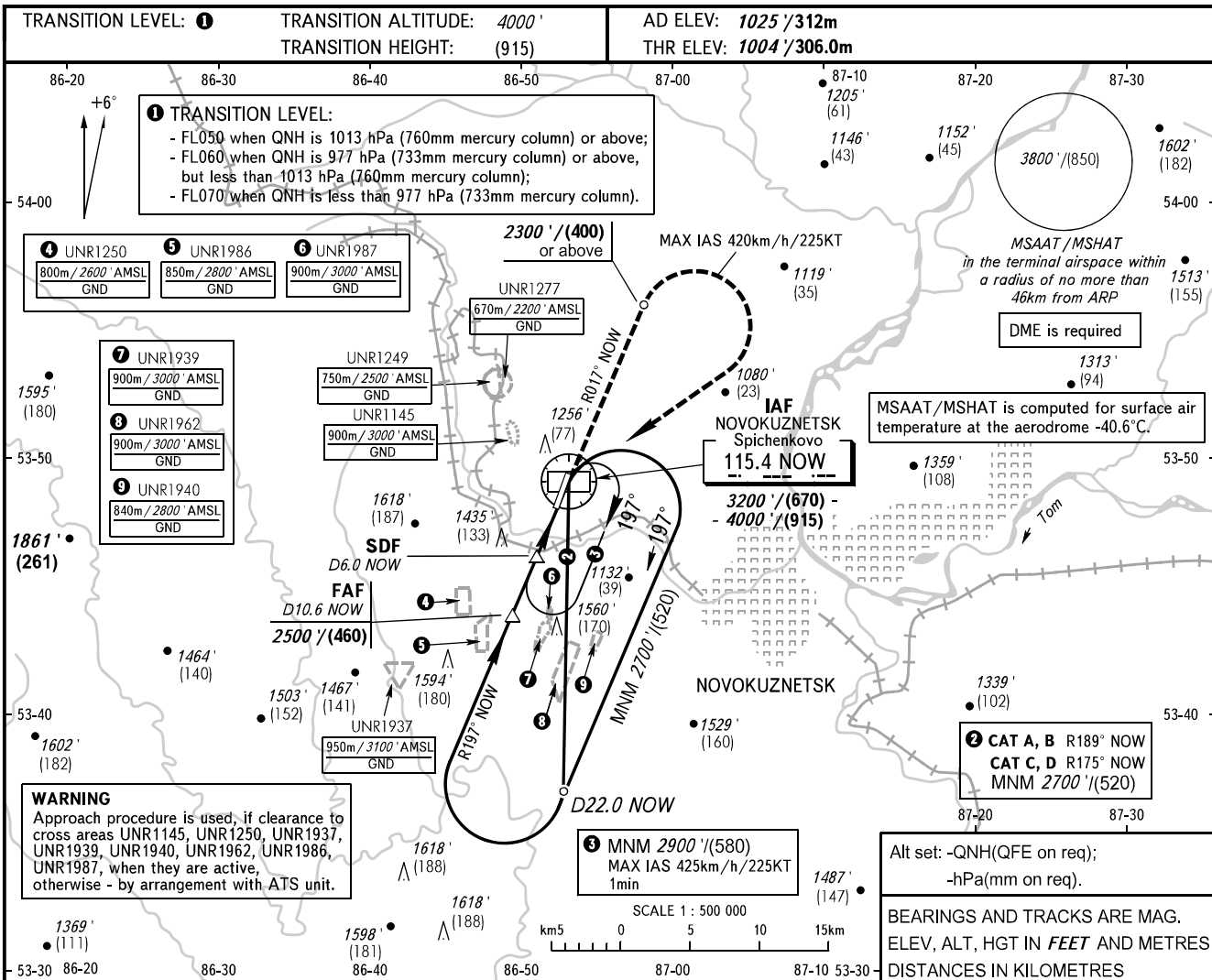


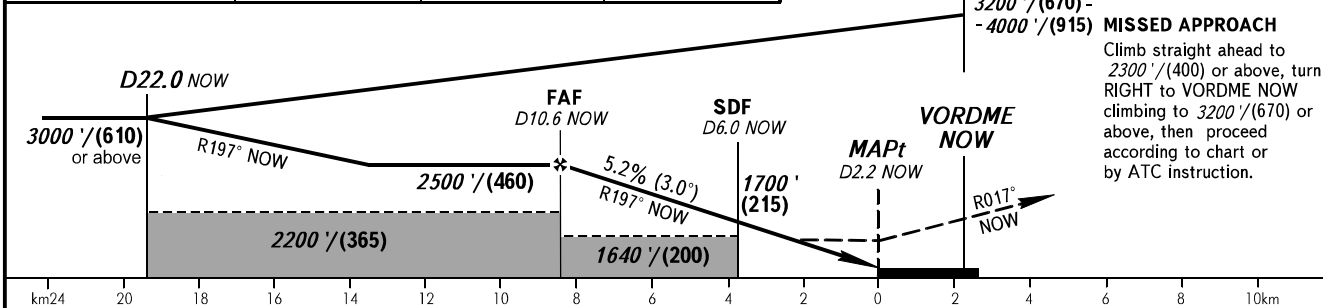
**INSTRUMENT
APPROACH
CHART - ICAO**

APPROACH **118.600**
START **121.200**

**NOVOKUZNETSK, RUSSIA
SPICHENKOVO
VOR RWY 01**



DME NOW	8.0	6.0	4.0
ALTITUDE/HEIGHT	2060'/(325)	1710'/(220)	1370'/(115)



OCA(H)		A	B	C	D	NOTE:					
Straight-in Approach	With SDF	1370' (370') (115)	1370' (370') (115)	1370' (370') (115)	1370' (370') (115)	1. MAPt at D2.2 NOW. Timing not authorized for defining MAPt. 2. Final approach track is offset by 3° from the RWY centre line. 3. Turn before passing VORDME NOW is PROHIBITED.					
	WO SDF	1640' (640') (200)	1640' (640') (200)	1640' (640') (200)	1640' (640') (200)						
Circling		1640' (640') (200)	1740' (710') (220)	1830' (810') (255)	1960' (940') (295)						
GROUND SPEED	km/h	150	180	210	240	270	300	330	360		
	kt	81	97	113	130	146	162	178	195		
RATE OF DESCENT	m/s	2.2	2.6	3.0	3.5	3.9	4.3	4.8	5.2		
	ft/min	427	512	597	682	768	853	938	1024		