

STANDARD DEPARTUE CHART
INSTRUMENT (SID) - ICAO

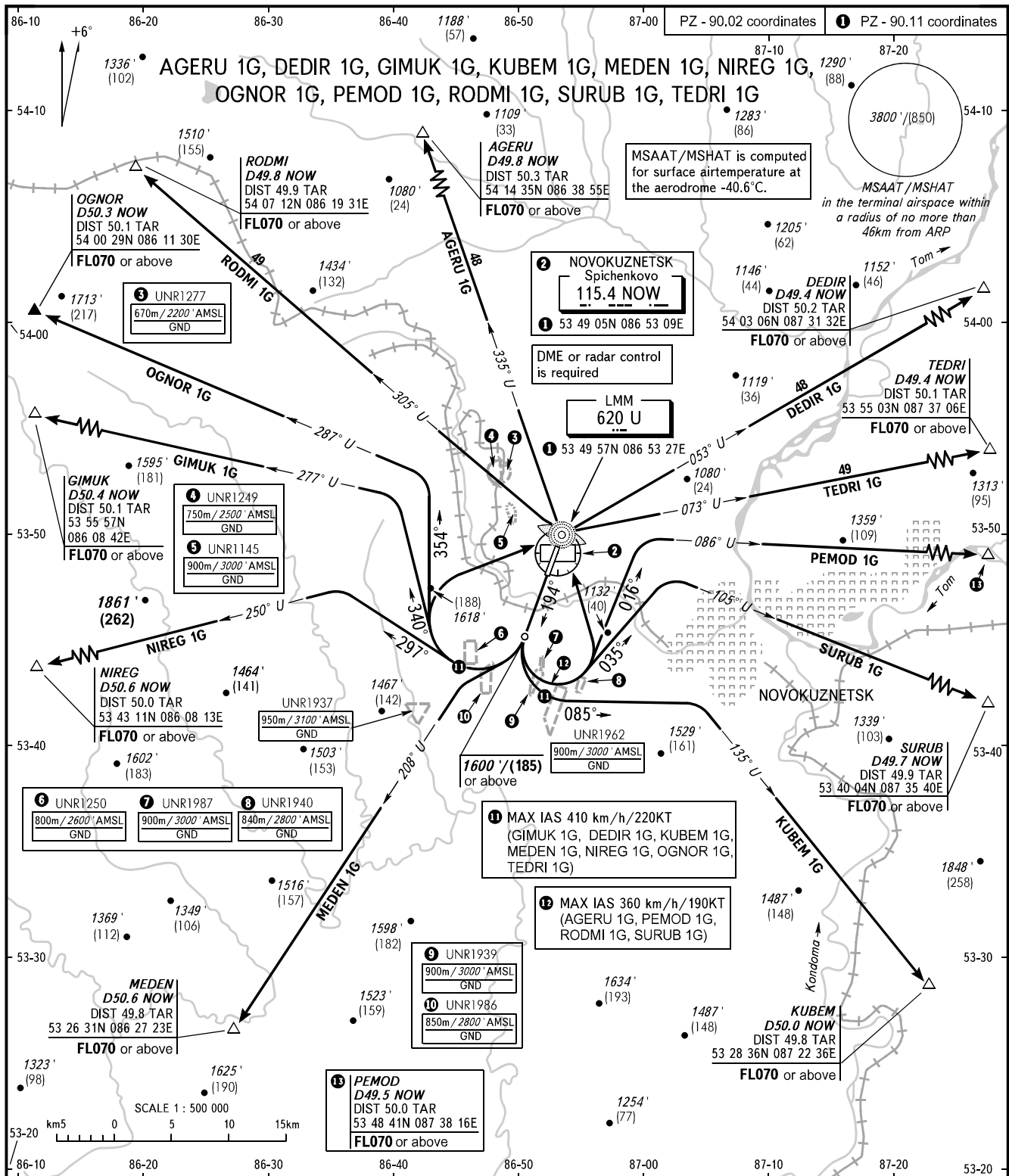
TRANSITION ALT: 4000'

TRANSITION HGT: (915)

NOVOKUZNETSK, RUSSIA

SPICHENKOVO

RWY 19



START APPROACH 121.200
118.600

BEARINGS AND TRACKS ARE MAGNETIC
ALTITUDES IN FEET, HEIGHTS IN METRES
ELEVATIONS IN FEET AND METRES
DISTANCES IN KILOMETRES

Alt set: -QNH(QFE on req);
-hPa(mm on req).

WARNING:

1. Turn before passing DER is PROHIBITED.
2. MNM climb gradient due to the airspace structure: - 3.8% up to FL070 for MEDEN 1G.
3. AGERU 1G, GIMUK 1G, DEDIR 1G, KUBEM 1G, MEDEN 1G, NIREG 1G, OGNOR 1G, PEMOD 1G, RODMI 1G, TEDRI 1G, SURUB 1G require permission to overfly UNR1145, UNR1250, UNR1937, UNR1939, UNR1940, UNR1962, UNR1986, UNR1987 (during their activity) or ATS unit coordination.