

STANDARD DEPARTUE CHART
INSTRUMENT (SID) - ICAO

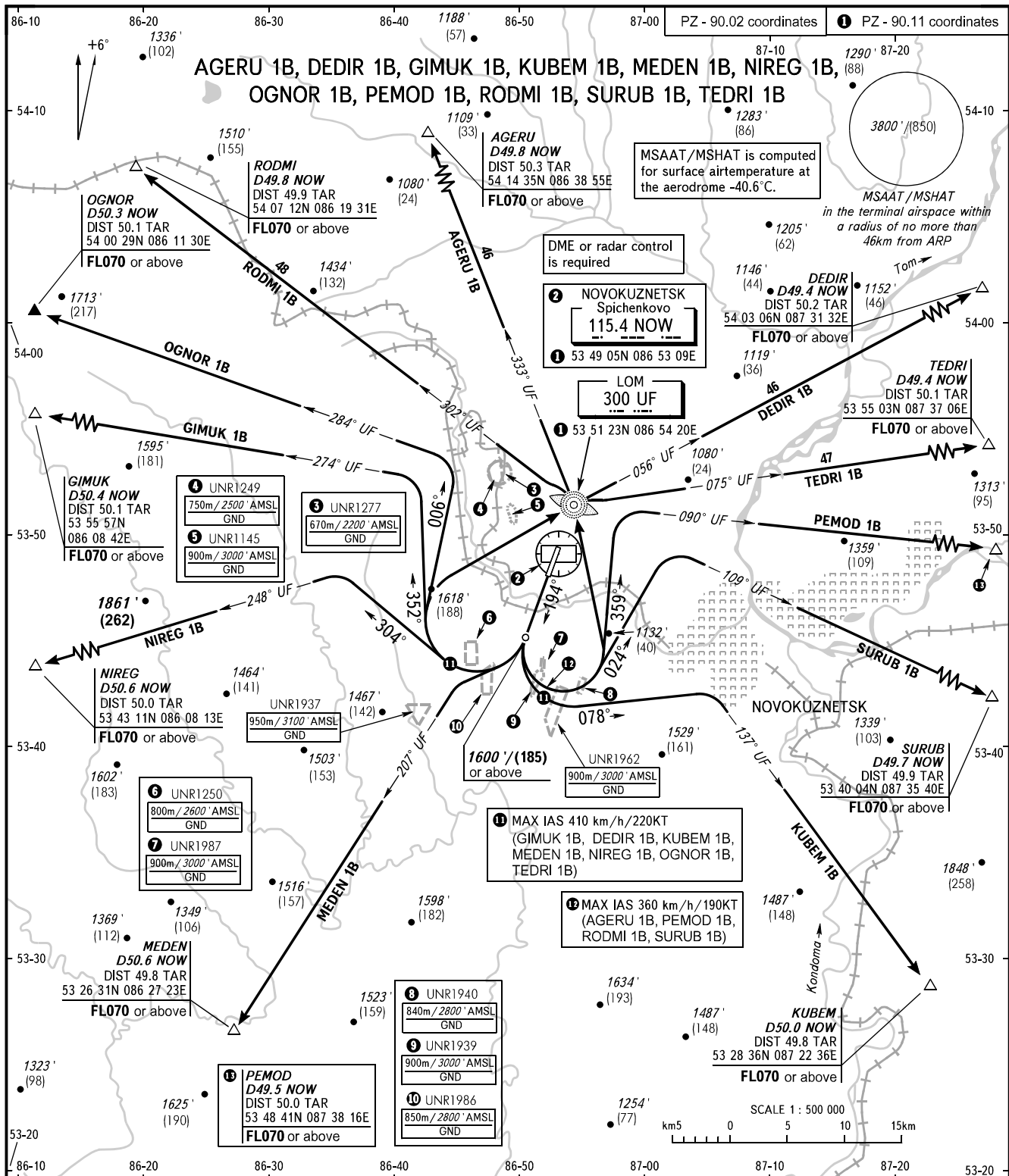
TRANSITION ALT: 4000'

TRANSITION HGT: (915)

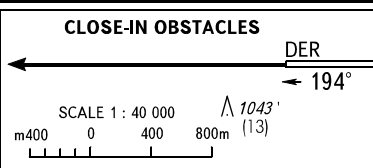
NOVOKUZNETSK, RUSSIA

SPICHENKOVO

RWY 19



START APPROACH 121.200
 APPROACH 118.600



WARNING:

1. Turn before passing DER is PROHIBITED.
2. MNM climb gradient due to the airspace structure: - 3.8% up to FL070 for MEDEN 1B.
3. AGERU 1B, GIMUK 1B, DEDIR 1B, KUBEM 1B, MEDEN 1B, NIREG 1B, OGNOR 1B, PEMOD 1B, RODMI 1B, SURUB 1B, TEDRI 1B require permission to overfly UNR1145, UNR1250, UNR1937, UNR1939, UNR1940, UNR1962, UNR1986, UNR1987 (during their activity) or ATS unit coordination.

BEARINGS AND TRACKS ARE MAGNETIC
 ALTITUDES IN FEET, HEIGHTS IN METRES
 ELEVATIONS IN FEET AND METRES
 DISTANCES IN KILOMETRES

Alt set: -QNH(QFE on req);
 -hPa(mm on req).