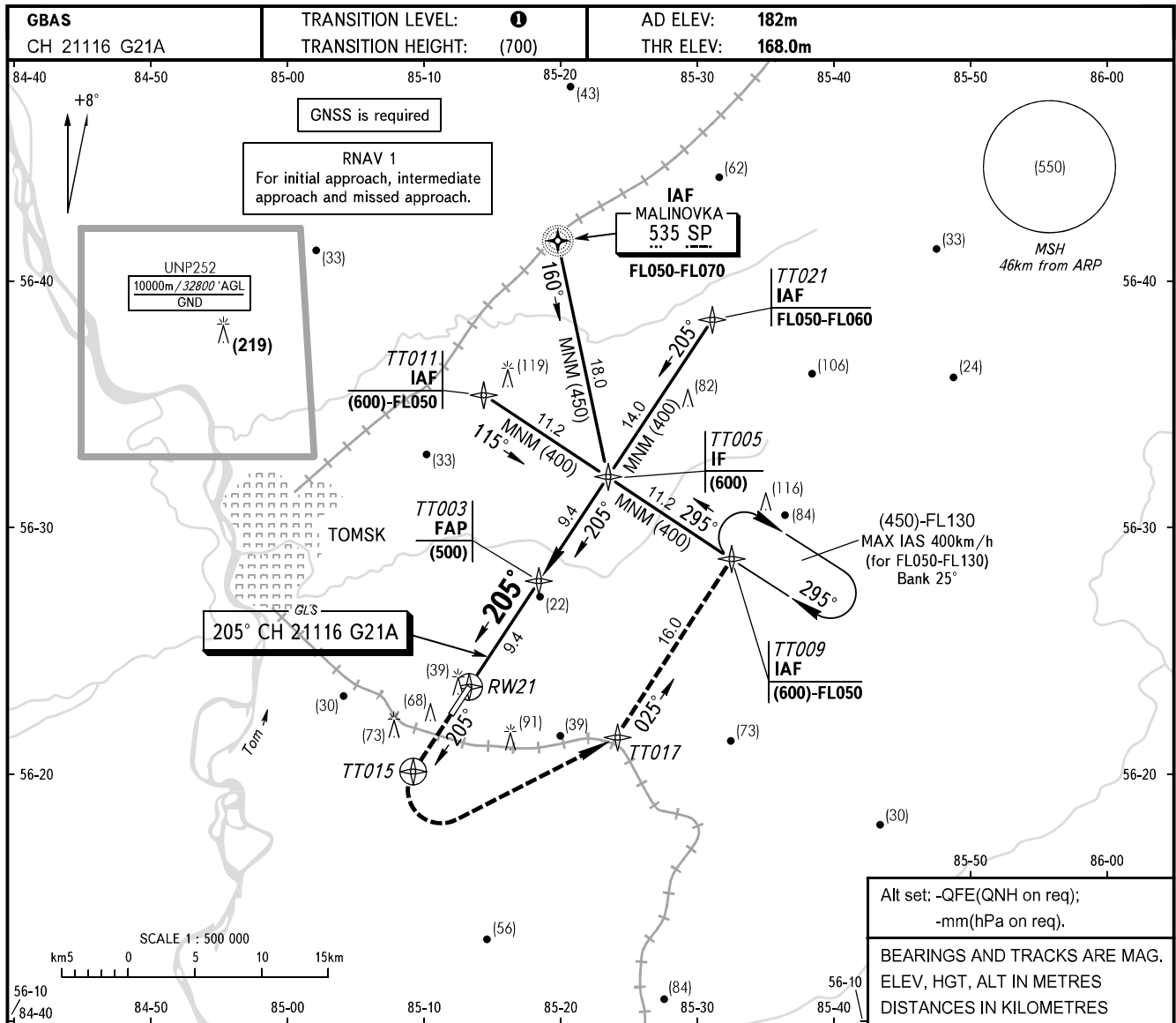


**INSTRUMENT  
APPROACH  
CHART - ICAO**

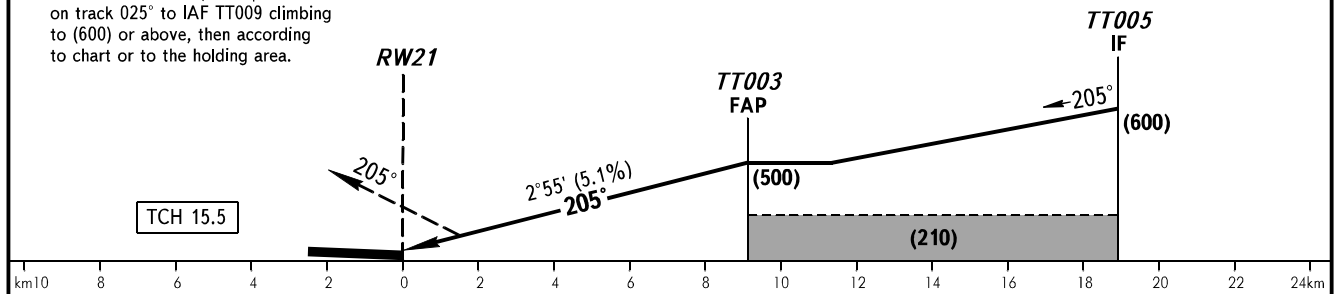
TOWER 127.300

**TOMSK, RUSSIA**  
BOGASHEVO  
GLS RWY 21



**MISSED APPROACH**

Climb on track 205° to TT015, turn LEFT to TT017, then proceed on track 025° to IAF TT009 climbing to (600) or above, then according to chart or to the holding area.



OCA(H)	A	B	C	D						
Straight-in Approach	233(65)	236(68)	239(71)	242(74)						
Circling	330(145)	335(150)	380(200)	395(210)						
GROUND SPEED	km/h	150	180	210	240	270	300	330	360	390
RATE OF DESCENT	m/s	2.1	2.5	3.0	3.4	3.8	4.2	4.7	5.1	5.5

① TRANSITION LEVEL:  
- FL040 when QFE is 743mm mercury column or above;  
- FL050 when QFE is less than 743mm mercury column.