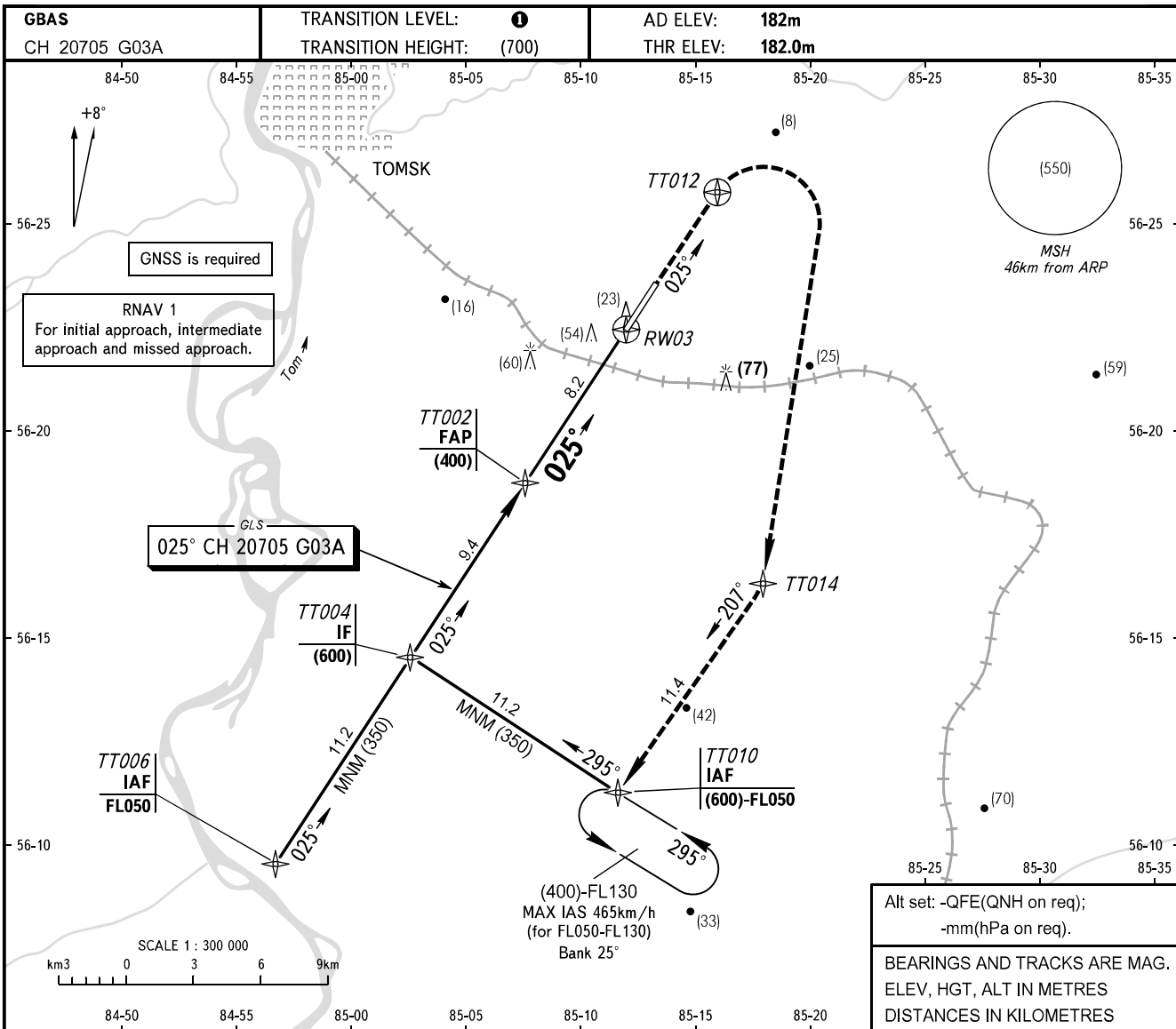


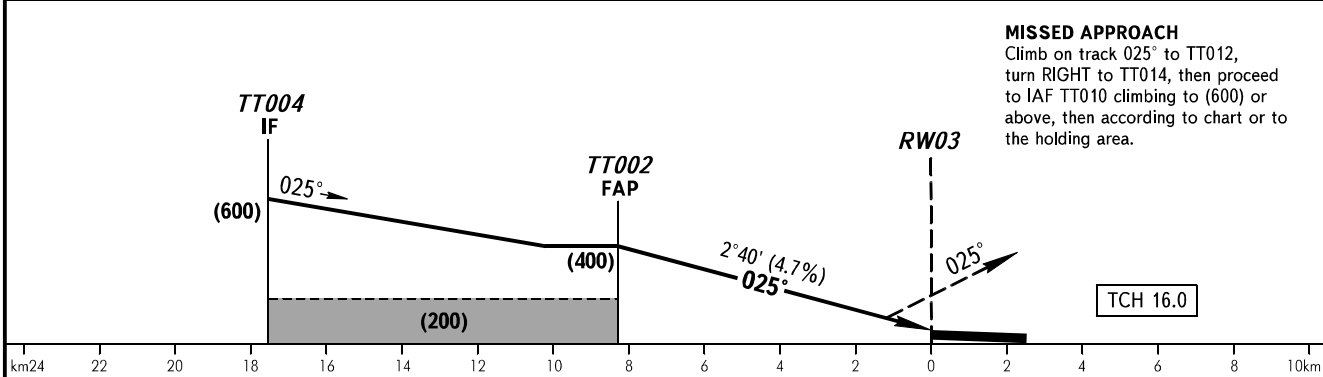
**INSTRUMENT
APPROACH
CHART - ICAO**

TOWER **127.300**

TOMSK, RUSSIA
BOGASHEVO
GLS RWY 03



Alt set: -QFE(QNH on req);
-mm(hPa on req).
BEARINGS AND TRACKS ARE MAG.
ELEV, HGT, ALT IN METRES
DISTANCES IN KILOMETRES



MISSED APPROACH
Climb on track 025° to TT012, turn RIGHT to TT014, then proceed to IAF TT010 climbing to (600) or above, then according to chart or to the holding area.

OCA(H)		A	B	C	D						
Straight-in Approach		243(61)	246(64)	251(69)	254(72)						
Circling		330(145)	335(150)	380(200)	395(210)						
GROUND SPEED		km/h	150	180	210	240	270	300	330	360	390
RATE OF DESCENT		m/s	2.0	2.3	2.7	3.1	3.5	3.9	4.3	4.7	5.1

TRANSITION LEVEL:
- FL040 when QFE is 743mm mercury column or above;
- FL050 when QFE is less than 743mm mercury column.