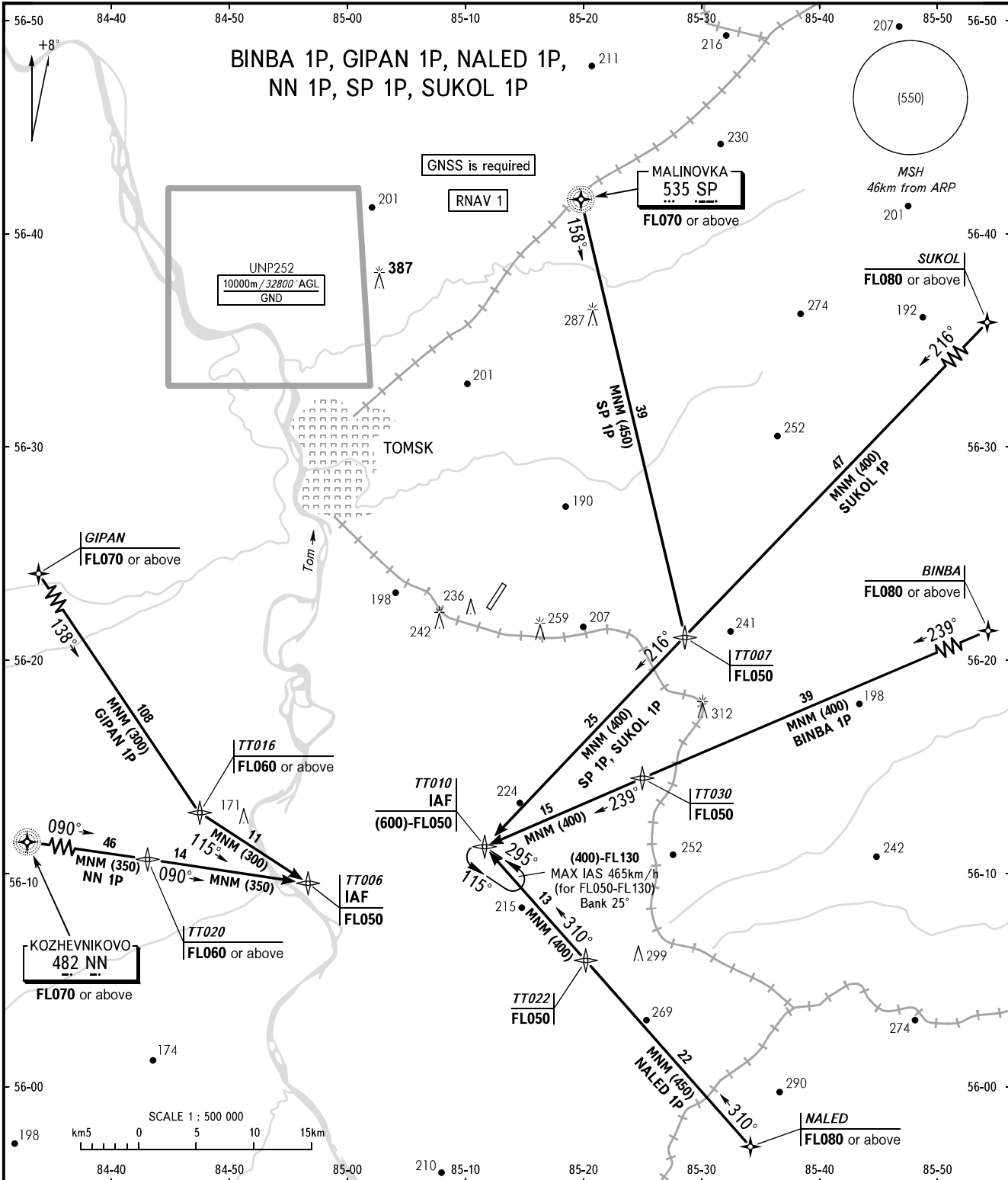


STANDARD ARRIVAL CHART  
INSTRUMENT (STAR) - ICAO

TOMSK, RUSSIA  
BOGASHEVO  
RNAV RWY 03

TRANSITION  
LEVEL: **1**



**1** TRANSITION LEVEL:  
- FL040 when QFE is 743mm mercury column or above;  
- FL050 when QFE is less than 743mm mercury column.

BEARINGS AND TRACKS ARE MAGNETIC  
ALTITUDES, HEIGHTS AND ELEVATIONS IN METRES  
DISTANCES IN KILOMETRES

Alt set: -QFE(QNH on req);  
-mm(hPa on req).

CHANGE: New chart