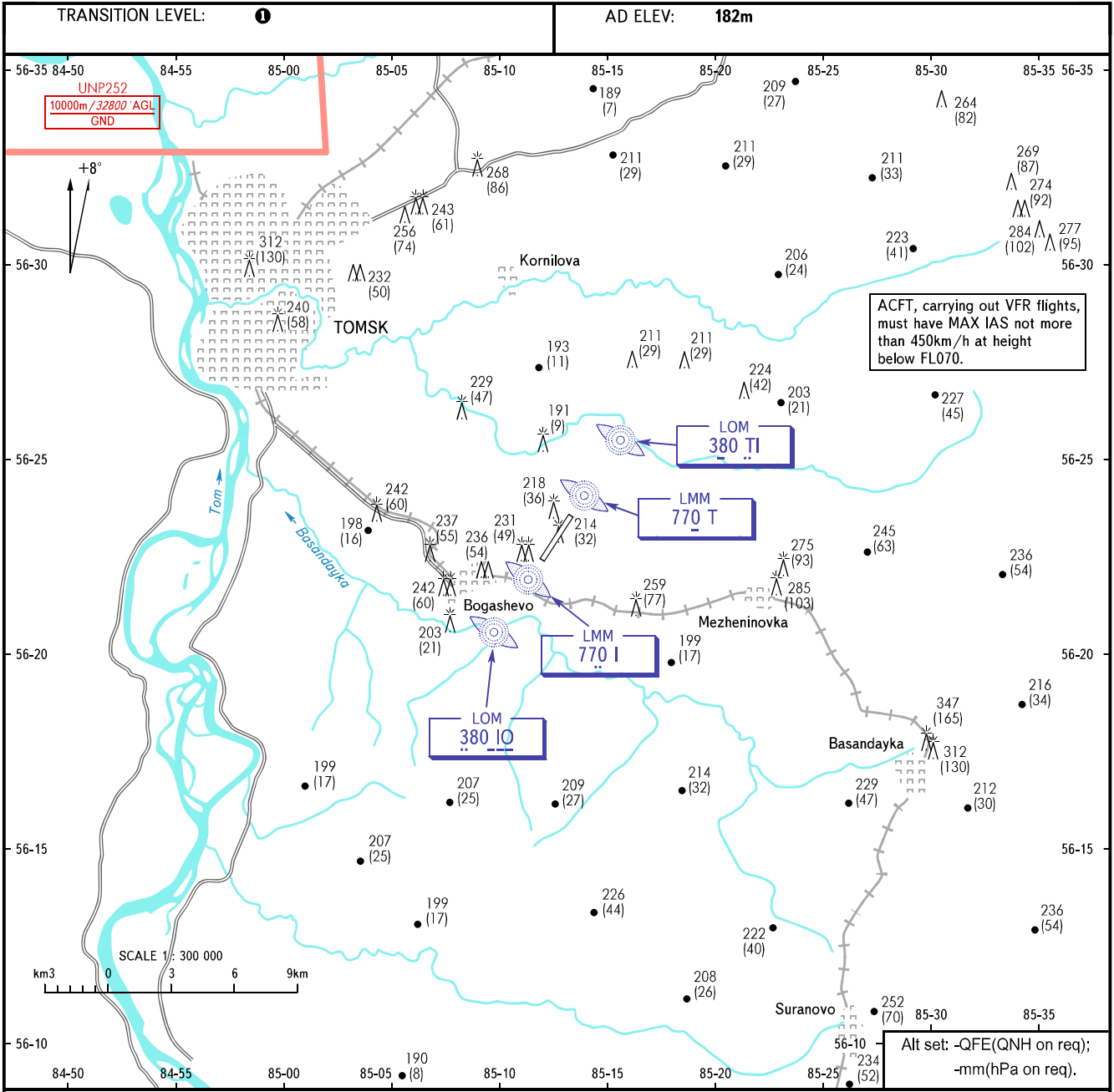


VISUAL
APPROACH
CHART - ICAO

TOWER 127.300

TOMSK, RUSSIA
BOGASHEVO
RWY 03/21



VISUAL APPROACH PROCEDURES:

- Visual approach conditions:
 - a decision to carry out a visual approach shall be taken by a flight crew (pilot-in-command) and coordinated with ATS unit;
 - the flight crew (pilot-in-command) shall have a visual contact with the runway and/or its references;
 - ceiling at AD is 600m or above or the flight crew (pilot-in-command) shall report that meteorological conditions allow to carry out a visual approach and landing;
 - the flight crew (pilot-in-command) shall maintain descent path and profile at own discretion, the responsibility for maintaining safe obstacle clearance heights shall be completely rested on the flight crew.
- A visual control of glide path indication by PAPI is AVBL (PAPI magnetic landing heading = 205° - 2°55').
- When a visual contact with the runway and/or its references is lost, the flight crew (pilot-in-command) shall proceed to the runway-in-use LOM climbing to (600)m, then execute approach according to the established procedure under IFR or by ATS unit instruction.

1 TRANSITION LEVEL:

- FL040 when QFE is 743mm mercury column or above;
- FL050 when QFE is less than 743mm mercury column.

CHANGE: New chart