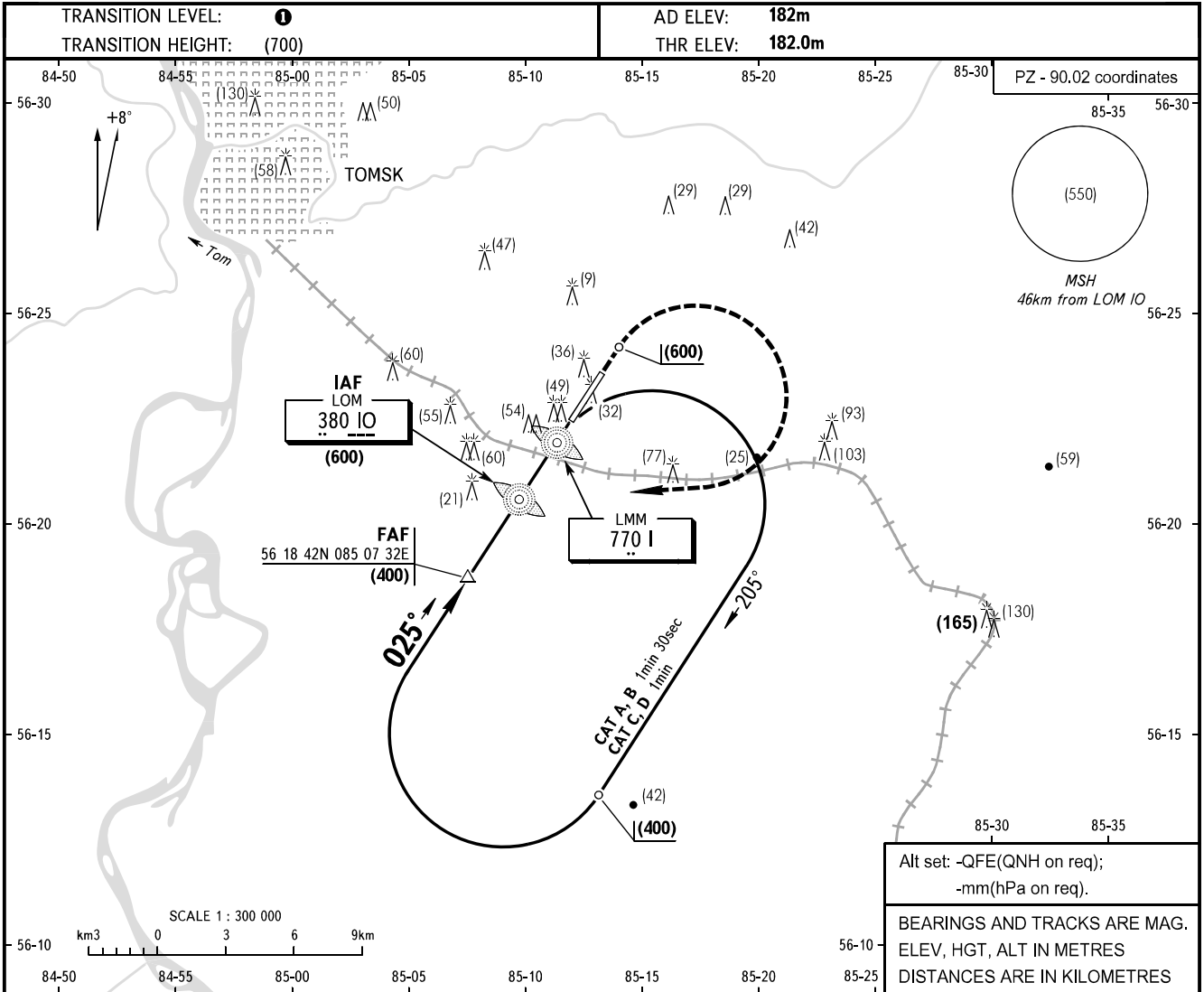


**INSTRUMENT
APPROACH
CHART - ICAO**

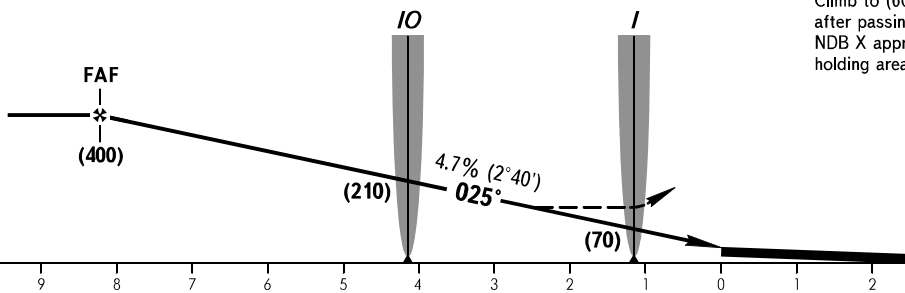
**TOMSK, RUSSIA
BOGASHEVO
2 NDB Z, NDB Z RWY 03**

TOWER 127.300



FAF is fixed by TAR - AZM 207° DIST 9.5.

MISSED APPROACH
Climb to (600), turn RIGHT to LOM IO, after passing LOM IO carry out RWY 03 NDB X approach or proceed to the holding area by ATC.



OCA(H)		A	B	C	D
Straight-in	2 NDB	296(114)	296(114)	296(114)	296(114)
	NDB (LOM)	311(129)	311(129)	311(129)	311(129)
Approach	NDB (LMM) With FAF	311(129)	311(129)	311(129)	311(129)
	WO FAF	326(144)	326(144)	326(144)	326(144)

1 TRANSITION LEVEL:
- FL040 when QFE is 743mm mercury column or above;
- FL050 when QFE is less than 743mm mercury column.

WARNING
GPWS may be brought into operation of short duration due to complex terrain on final between LOM and LMM.

GROUND SPEED	km/h	150	180	210	240	270	300	330	360	390	420	450
RATE OF DESCENT	m/s	2.0	2.4	2.7	3.1	3.5	3.9	4.3	4.7	5.1	5.5	5.9

CHANGE: New chart