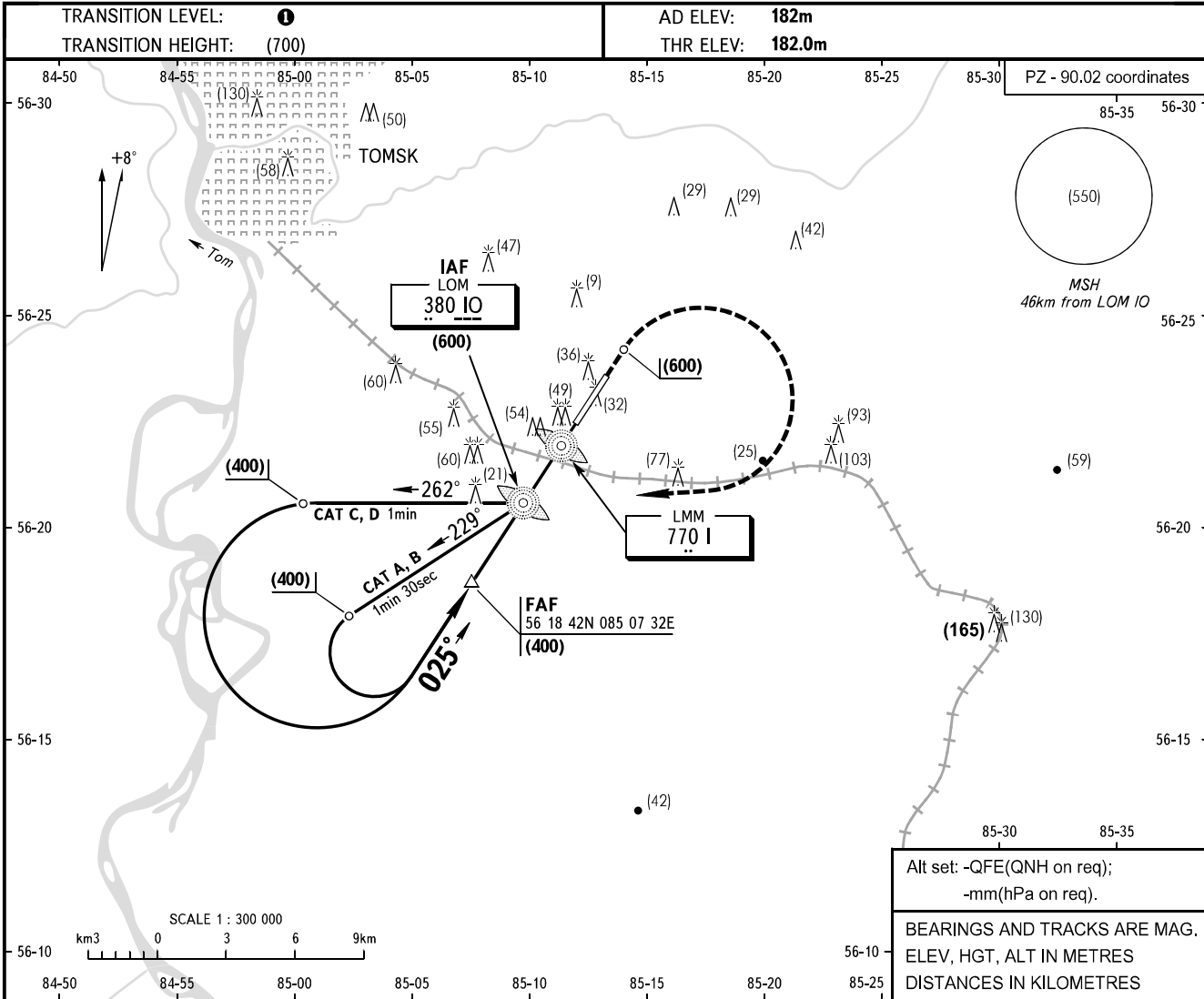


**INSTRUMENT  
APPROACH  
CHART - ICAO**

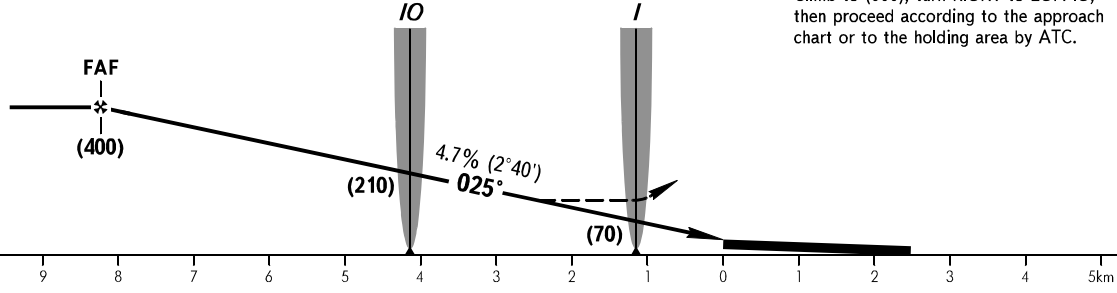
TOWER **127.300**

**TOMSK, RUSSIA**  
BOGASHEVO  
2 NDB X, NDB X RWY 03



FAF is fixed by TAR - AZM 207° DIST 9.5.

**MISSED APPROACH**  
Climb to (600), turn RIGHT to LOM IO, then proceed according to the approach chart or to the holding area by ATC.



OCA(H)		A	B	C	D
Straight-in	<b>2 NDB</b>	296(114)	296(114)	296(114)	296(114)
	<b>NDB (LOM)</b>	311(129)	311(129)	311(129)	311(129)
Approach	<b>NDB (LMM) With FAF</b>	311(129)	311(129)	311(129)	311(129)
	<b>WO FAF</b>	326(144)	326(144)	326(144)	326(144)

**1** TRANSITION LEVEL:  
- FL040 when QFE is 743mm mercury column or above;  
- FL050 when QFE is less than 743mm mercury column.

**WARNING**  
GPWS may be brought into operation of short duration due to complex terrain on final between LOM and LMM.

GROUND SPEED	km/h	150	180	210	240	270	300	330	360	390	420	450
RATE OF DESCENT	m/s	2.0	2.4	2.7	3.1	3.5	3.9	4.3	4.7	5.1	5.5	5.9

CHANGE: New chart