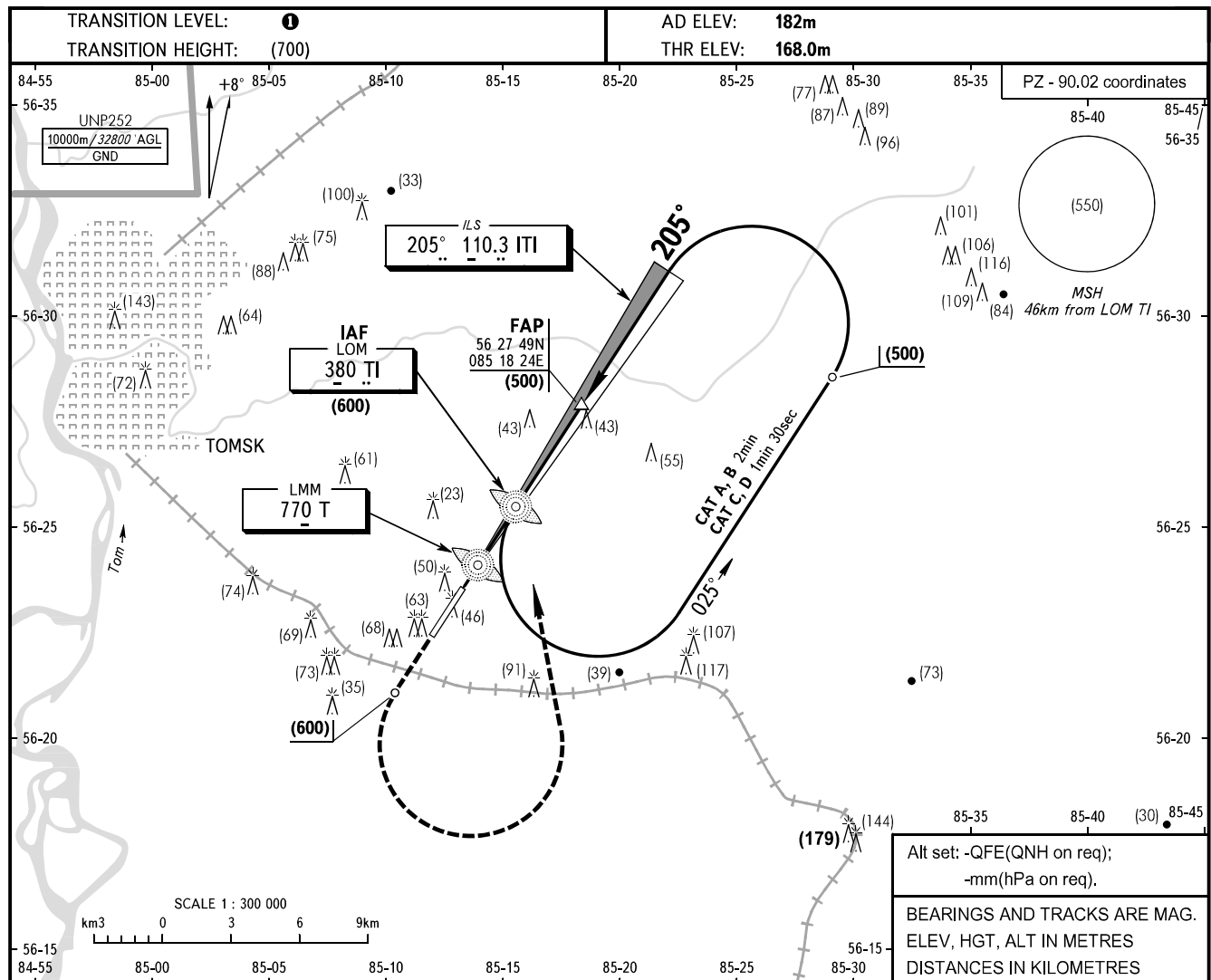


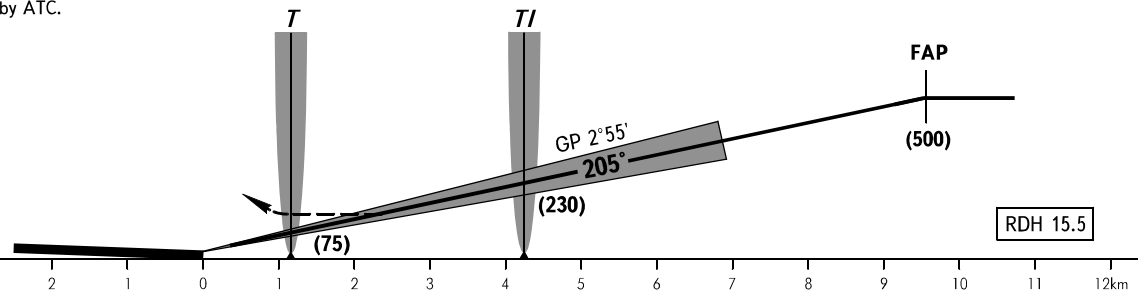
INSTRUMENT
APPROACH
CHART - ICAO

TOWER 127.300

TOMSK, RUSSIA
BOGASHEVO
ILS Z CAT I RWY 21



MISSED APPROACH
Climb to (600), turn LEFT to LOM TI,
after passing LOM TI carry out RWY 21
NDB X approach or proceed to the
holding area by ATC.



| OCA(H) | | A | B | C | D | | | | | | | | |
|-----------------|----------|---------|---------|---------|---------|-----|-----|-----|-----|-----|-----|-----|-----|
| Straight-in | CAT I | 217(49) | 220(52) | 224(56) | 228(60) | | | | | | | | |
| | Approach | | | | | | | | | | | | |
| | | | | | | | | | | | | | |
| GROUND SPEED | | km/h | 150 | 180 | 210 | 240 | 270 | 300 | 330 | 360 | 390 | 420 | 450 |
| RATE OF DESCENT | | m/s | 2.1 | 2.5 | 3.0 | 3.4 | 3.8 | 4.2 | 4.7 | 5.1 | 5.5 | 5.9 | 6.4 |

① TRANSITION LEVEL:
- FL040 when QFE is 743mm mercury column or above;
- FL050 when QFE is less than 743mm mercury column.