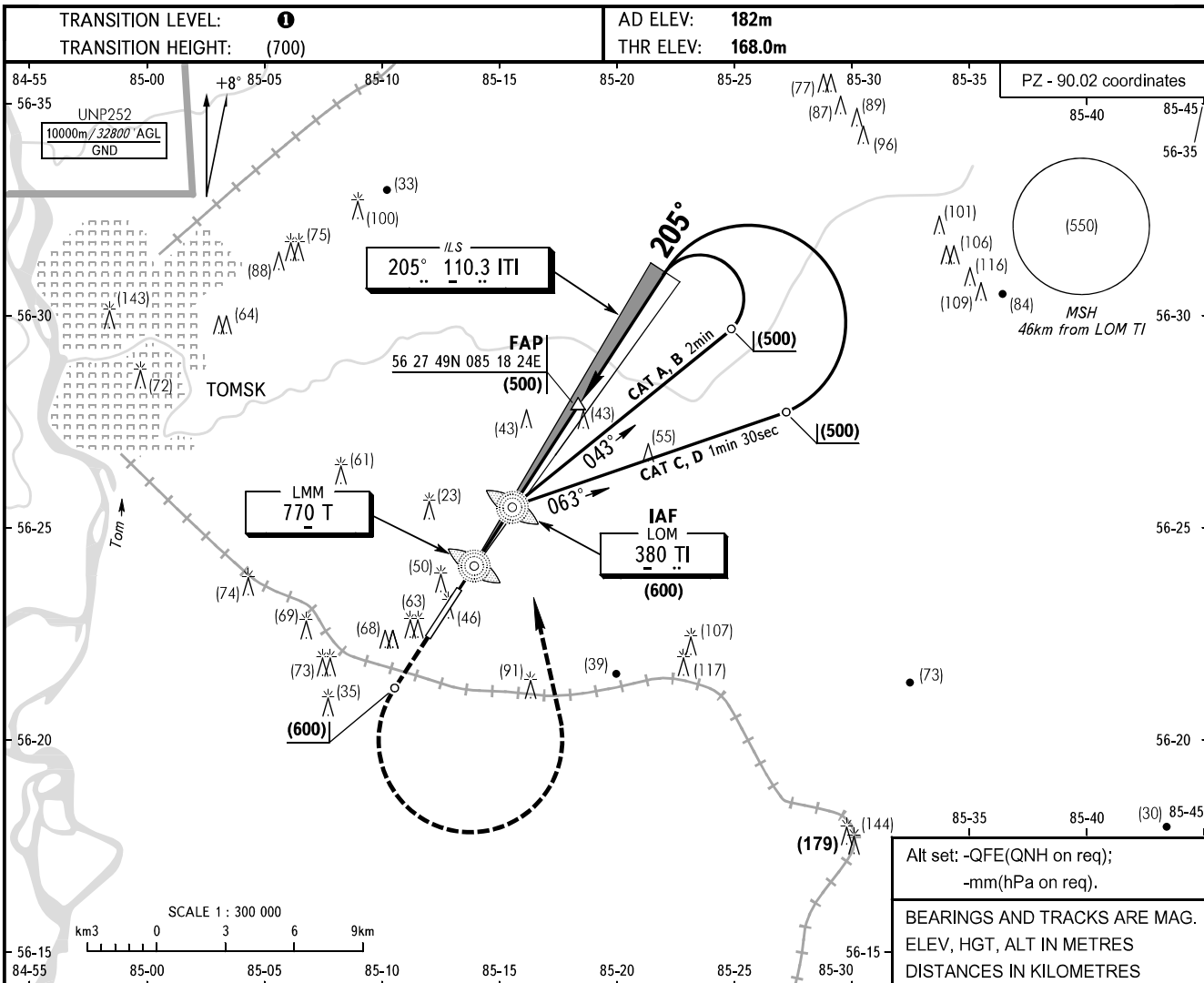


**INSTRUMENT
APPROACH
CHART - ICAO**

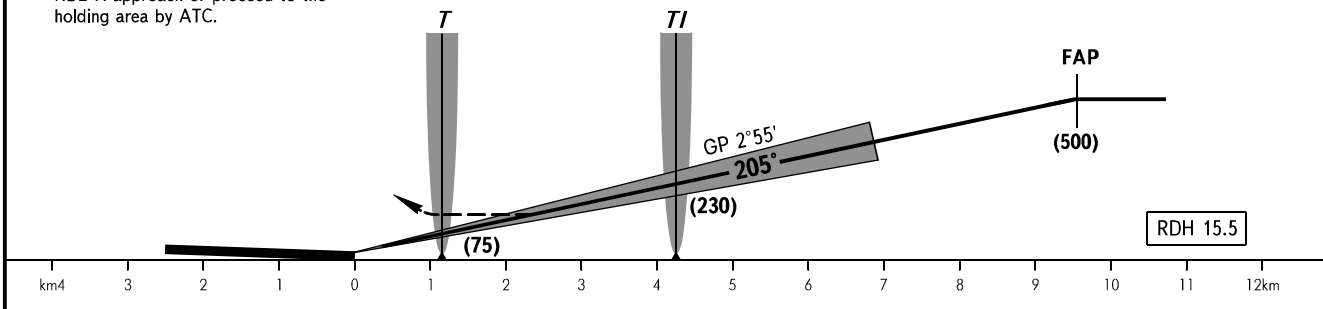
TOWER 127.300

**TOMSK, RUSSIA
BOGASHEVO
ILS Y CAT I RWY 21**



MISSED APPROACH

Climb to (600), turn LEFT to LOM TI, after passing LOM TI carry out RWY 21 NDB X approach or proceed to the holding area by ATC.



OCA(H)		A	B	C	D	1 TRANSITION LEVEL: - FL040 when QFE is 743mm mercury column or above; - FL050 when QFE is less than 743mm mercury column.							
CAT I		217(49)	220(52)	224(56)	228(60)								
Straight-in Approach													
GROUND SPEED		km/h	150	180	210	240	270	300	330	360	390	420	450
RATE OF DESCENT		m/s	2.1	2.5	3.0	3.4	3.8	4.2	4.7	5.1	5.5	5.9	6.4

CANGE: New chart