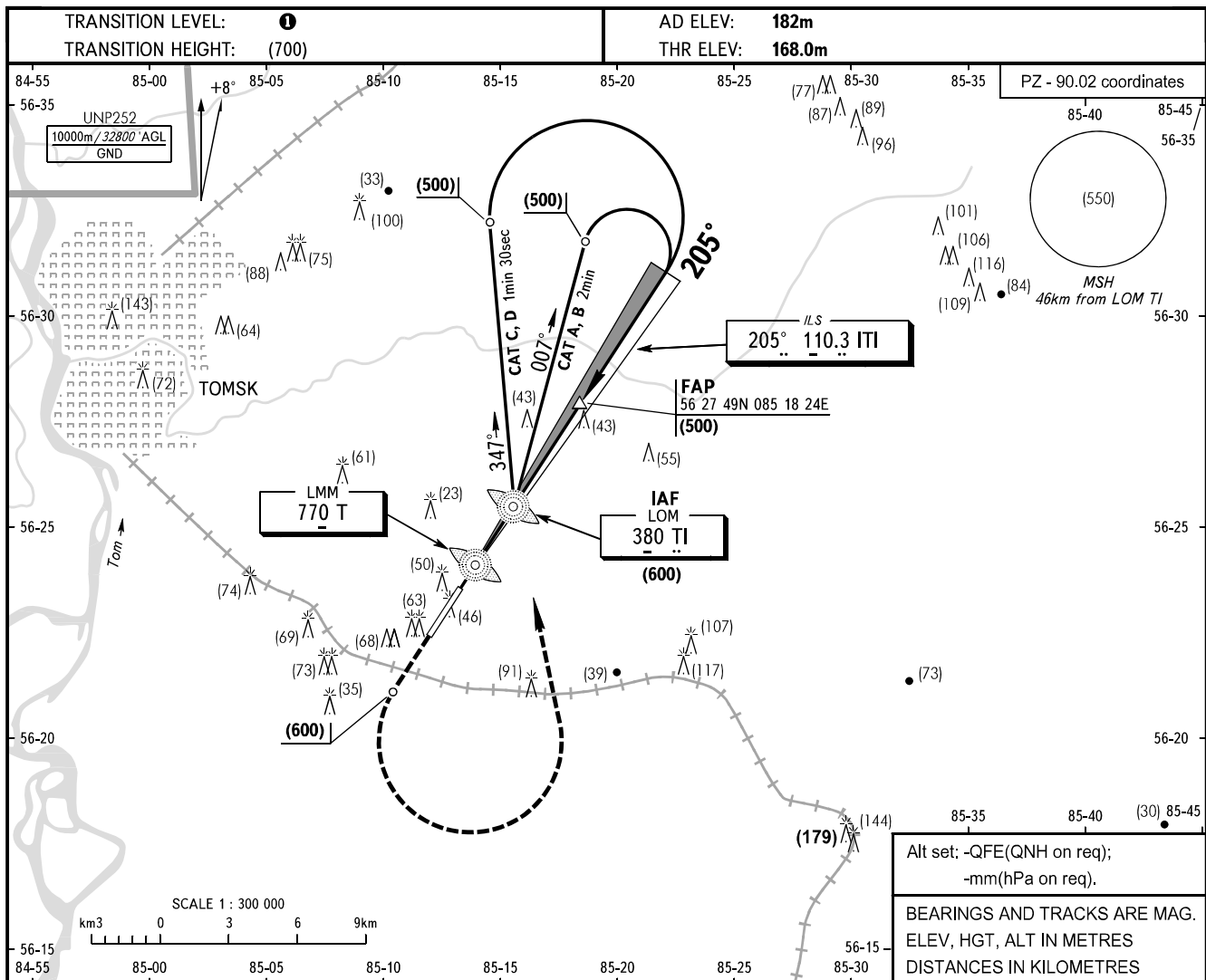


**INSTRUMENT
APPROACH
CHART - ICAO**

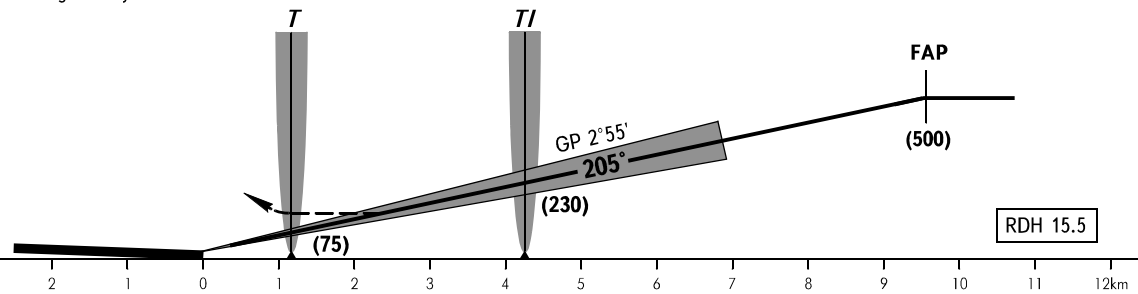
TOWER 127.300

TOMSK, RUSSIA
BOGASHEVO
ILS X CAT I RWY 21



Alt set: -QFE(QNH on req);
-mm(hPa on req).
BEARINGS AND TRACKS ARE MAG.
ELEV, HGT, ALT IN METRES
DISTANCES IN KILOMETRES

MISSED APPROACH
Climb to (600), turn LEFT to LOM TI,
then proceed according to the approach
chart or to the holding area by ATC.



OCA(H)		A	B	C	D								
Straight-in	CAT I	217(49)	220(52)	224(56)	228(60)								
	Approach												
GROUND SPEED		km/h	150	180	210	240	270	300	330	360	390	420	450
RATE OF DESCENT		m/s	2.1	2.5	3.0	3.4	3.8	4.2	4.7	5.1	5.5	5.9	6.4

① TRANSITION LEVEL:
- FL040 when QFE is 743mm mercury column or above;
- FL050 when QFE is less than 743mm mercury column.