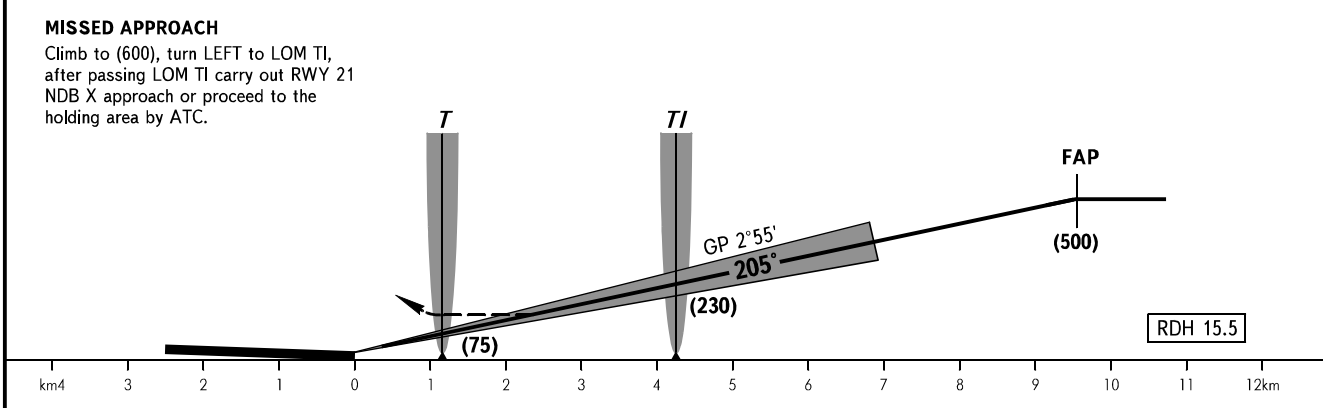
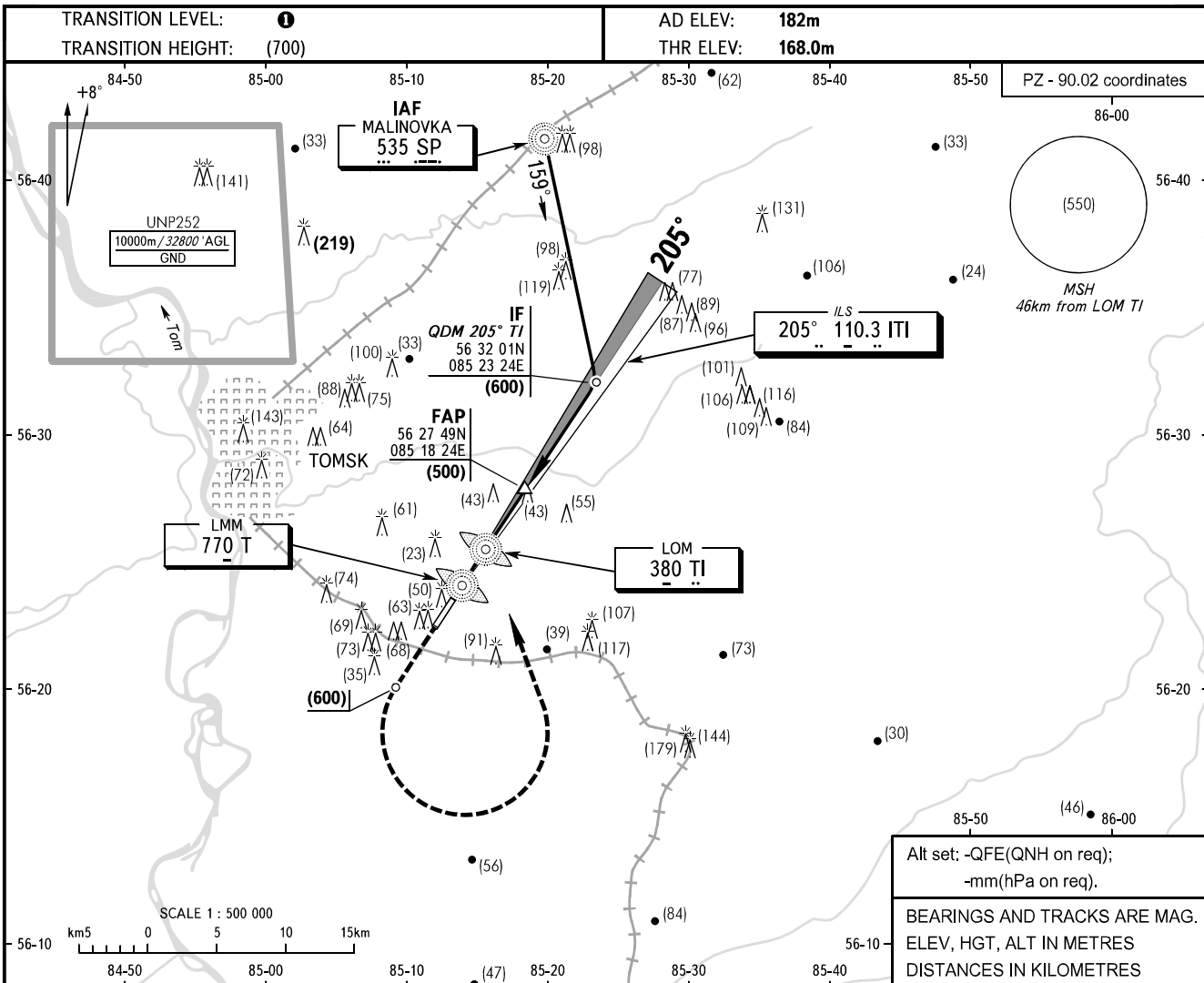


**INSTRUMENT
APPROACH
CHART - ICAO**

TOWER **127.300**

**TOMSK, RUSSIA
BOGASHEVO
ILS W CAT I RWY 21**



OCA(H)		A	B	C	D	① TRANSITION LEVEL: - FL040 when QFE is 743mm mercury column or above; - FL050 when QFE is less than 743mm mercury column.									
Straight-in	CAT I	217(49)	220(52)	224(56)	228(60)										
	Approach														
GROUND SPEED		km/h	150	180	210	240	270	300	330	360	390	420	450		
RATE OF DESCENT		m/s	2.1	2.5	3.0	3.4	3.8	4.2	4.7	5.1	5.5	5.9	6.4		

CHANGE: New chart