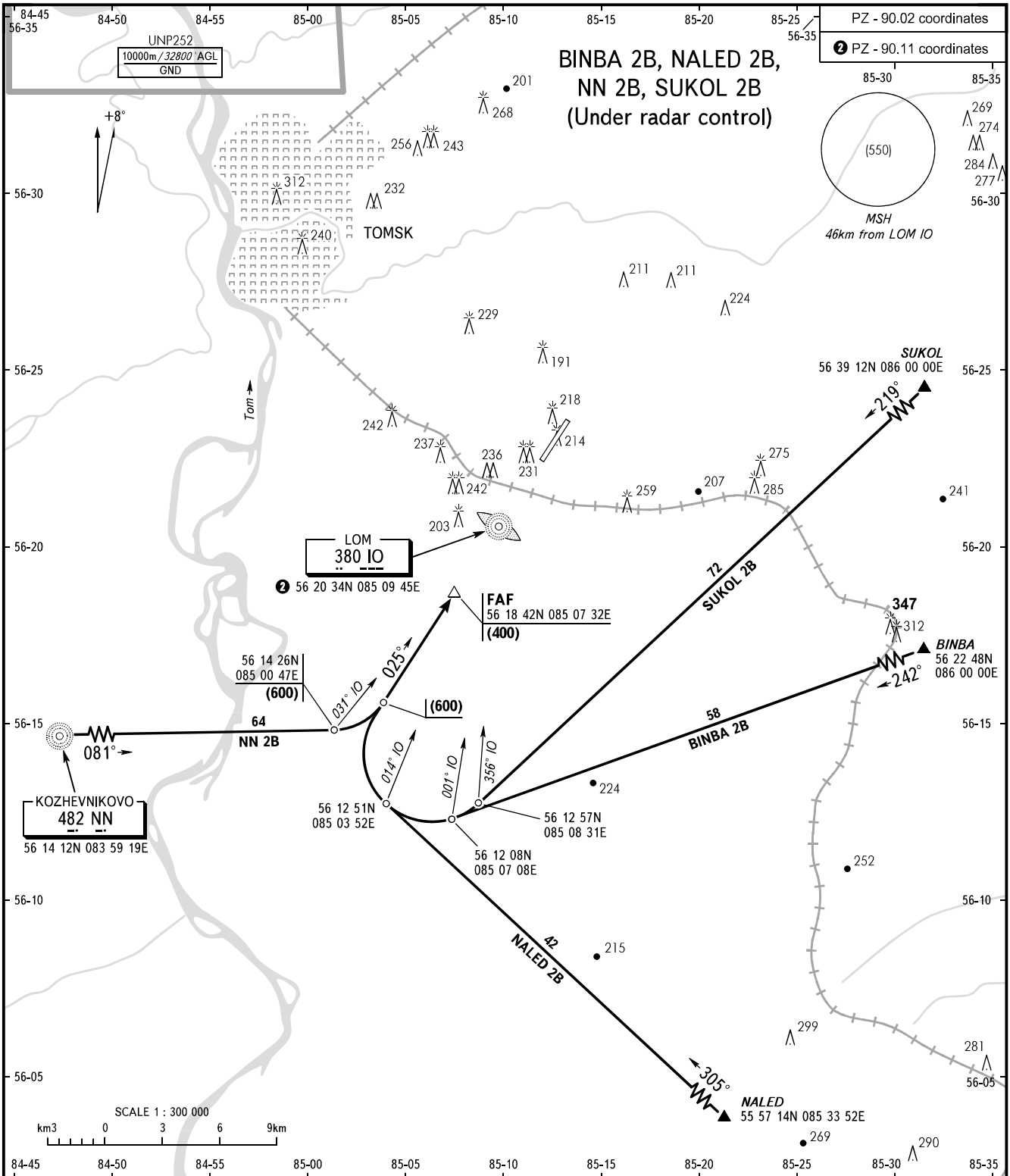


STANDARD ARRIVAL CHART
INSTRUMENT (STAR) - ICAO

TOMSK, RUSSIA
BOGASHEVO
RWY 03

TRANSITION
LEVEL: **1**



TOWER **127.300**

1 TRANSITION LEVEL:
- FL040 when QFE is 743mm mercury column or above;
- FL050 when QFE is less than 743mm mercury column.

WARNING:

- FL for passing the exit points on ATS routes shall be assigned by ATC.
- STAR NALED 2B, NN 2B: descent to turn on final is allowed on condition that transition level is reached before DIST 27km from RWY 03 extremity.
- STAR NN 2B: flight altitude shall be maintained by ATC instruction during training flights of state aviation.

BEARINGS AND TRACKS ARE MAGNETIC
ALTITUDES, HEIGHTS AND ELEVATIONS IN METRES
DISTANCES IN KILOMETRES

Alt set: -QFE(QNH on req);
-mm(hPa on req).

CHANGE: New chart