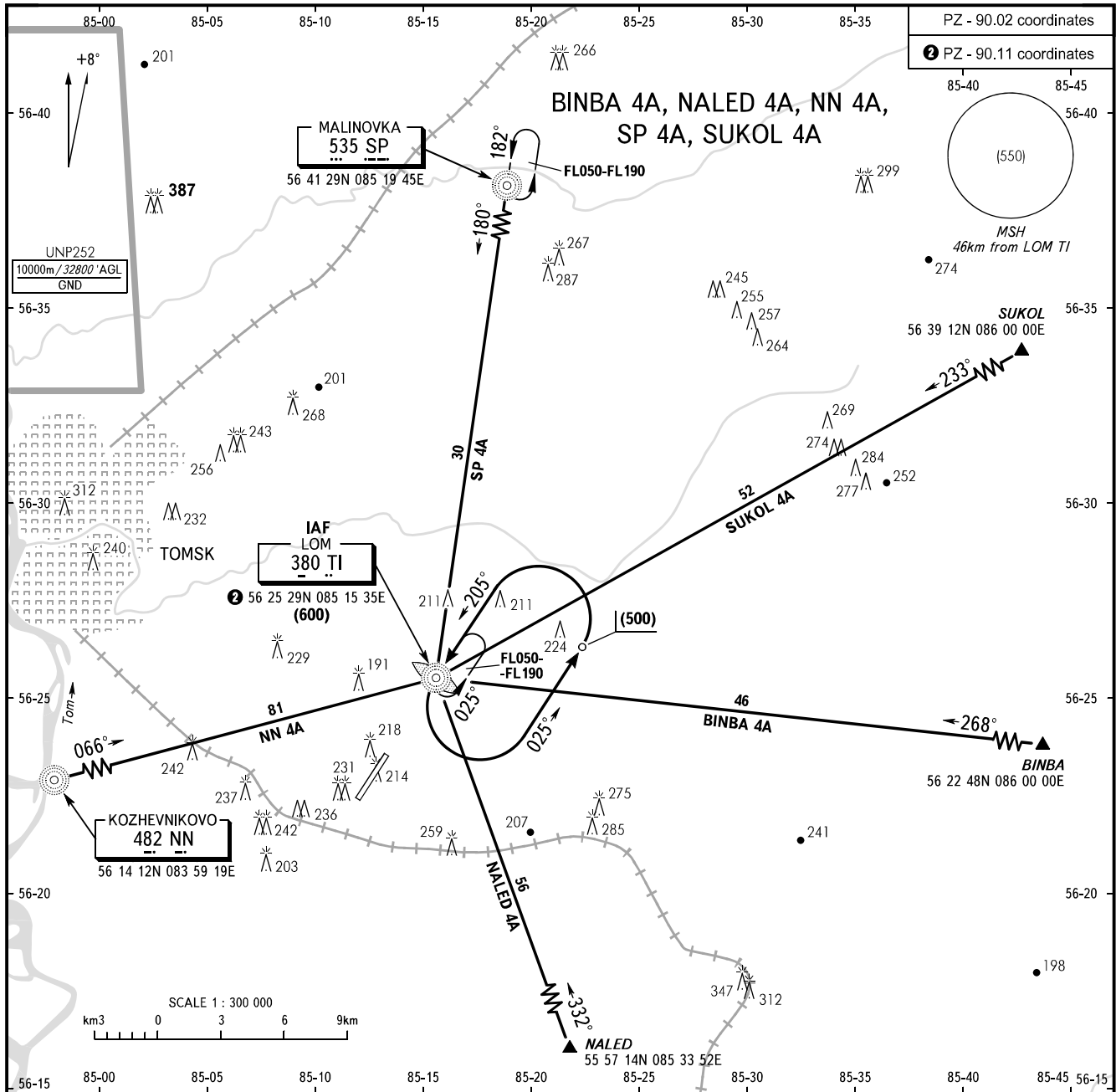


STANDARD ARRIVAL CHART
INSTRUMENT (STAR) - ICAO

TOMSK, RUSSIA
BOGASHEVO
RWY 21

TRANSITION
LEVEL: **1**



STAR	ROUTE
SP 4A	Proceed to turn on final of instrument approach procedure "W" for straight-in approach. It is allowed to carry out straight-in approach if transition level is reached before DIST 27km from RWY 21 extremity, otherwise the approach shall be carried out via LOM TI according to instrument approach procedure "Z".
BINBA 4A, SUKOL 4A	Proceed to LOM TI. After passing LOM TI turn LEFT onto track 025° and fly for 2min (CAT A, B ACFT) or for 1min 30sec (CAT C, D ACFT), then turn LEFT to carry out approach according to instrument approach procedure "Z". When radar control is provided - proceed to turn on final.
NALED 4A	Proceed to LOM TI. After passing LOM TI CAT A, B ACFT shall proceed on track 007° for 2min; CAT C, D ACFT shall proceed on track 347° for 1min 30sec, then turn RIGHT to carry out approach procedure. When radar control is provided - proceed to turn on final.
NN 4A	Proceed to LOM TI. After passing LOM TI CAT A, B ACFT shall proceed on track 043° for 2min; CAT C, D ACFT shall proceed on track 063° for 1min 30sec, then turn LEFT to carry out approach procedure.

TOWER **127.300**

1 TRANSITION LEVEL:
 - FL040 when QFE is 743mm mercury column or above;
 - FL050 when QFE is less than 743mm mercury column.

WARNING
 FL for passing the exit points on ATS routes shall be assigned by ATC.

BEARINGS AND TRACKS ARE MAGNETIC
 ALTITUDES, HEIGHTS AND ELEVATIONS IN METRES
 DISTANCES IN KILOMETRES

Alt set: -QFE(QNH on req);
 -mm(hPa on req).