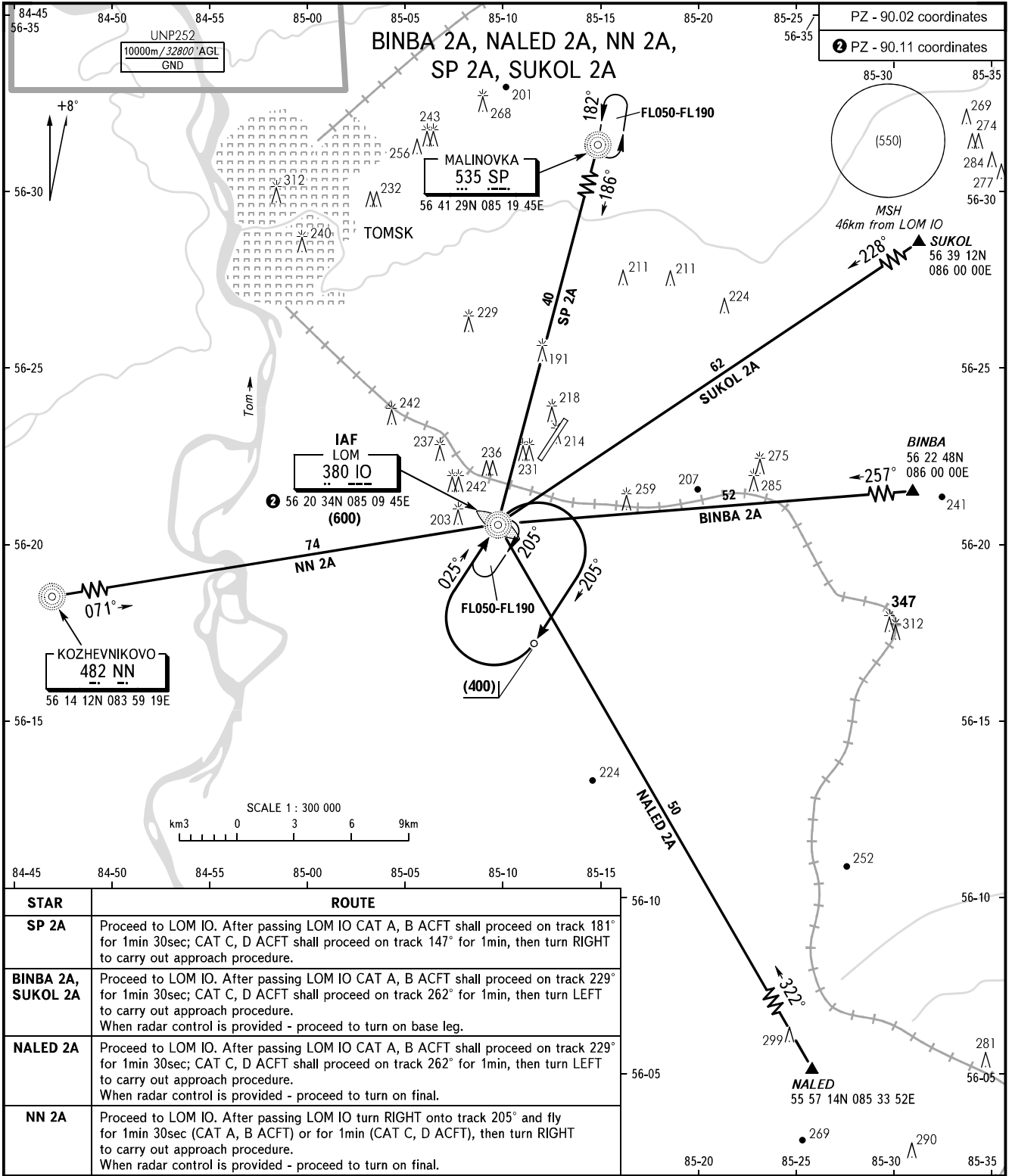


STANDARD ARRIVAL CHART
INSTRUMENT (STAR) - ICAO

TOMSK, RUSSIA
BOGASHEVO
RWY 03

TRANSITION
LEVEL: **1**



STAR	ROUTE
SP 2A	Proceed to LOM IO. After passing LOM IO CAT A, B ACFT shall proceed on track 181° for 1min 30sec; CAT C, D ACFT shall proceed on track 147° for 1min, then turn RIGHT to carry out approach procedure.
BINBA 2A, SUKOL 2A	Proceed to LOM IO. After passing LOM IO CAT A, B ACFT shall proceed on track 229° for 1min 30sec; CAT C, D ACFT shall proceed on track 262° for 1min, then turn LEFT to carry out approach procedure. When radar control is provided - proceed to turn on base leg.
NALED 2A	Proceed to LOM IO. After passing LOM IO CAT A, B ACFT shall proceed on track 229° for 1min 30sec; CAT C, D ACFT shall proceed on track 262° for 1min, then turn LEFT to carry out approach procedure. When radar control is provided - proceed to turn on final.
NN 2A	Proceed to LOM IO. After passing LOM IO turn RIGHT onto track 205° and fly for 1min 30sec (CAT A, B ACFT) or for 1min (CAT C, D ACFT), then turn RIGHT to carry out approach procedure. When radar control is provided - proceed to turn on final.

TOWER **127.300**

1 TRANSITION LEVEL:
- FL040 when QFE is 743mm mercury column or above;
- FL050 when QFE is less than 743mm mercury column.
WARNING
FL for passing the exit points on ATS routes shall be assigned by ATC.

BEARINGS AND TRACKS ARE MAGNETIC
ALTITUDES, HEIGHTS AND ELEVATIONS IN METRES
DISTANCES IN KILOMETRES

Alt set: -QFE(QNH on req);
-mm(hPa on req).

CHANGE: New chart