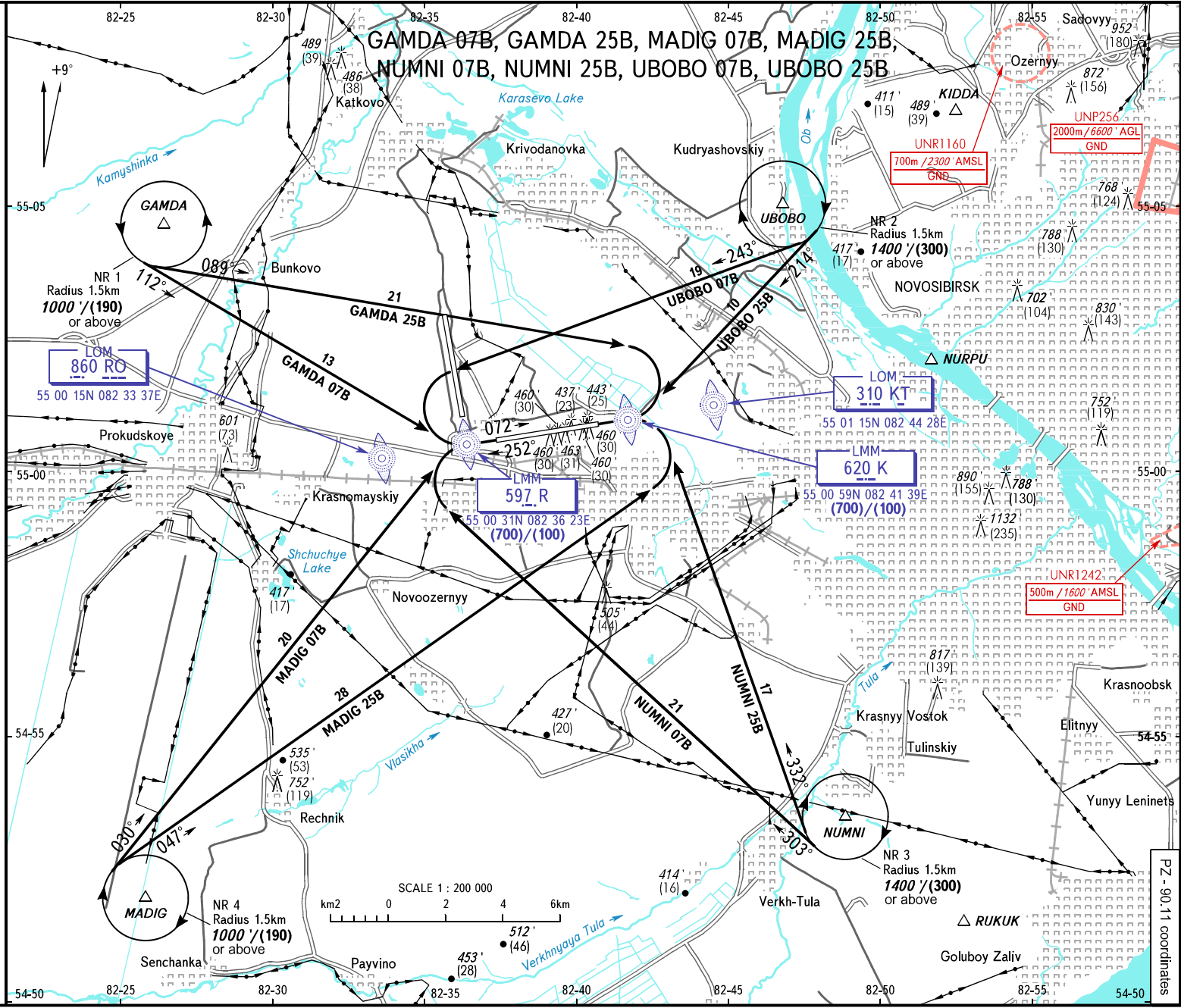


VFR  
ARRIVAL  
CHART

NOVOSIBIRSK, RUSSIA  
TOLMACHEVO  
RWY 07/25

TRANSITION  
LEVEL: **1**

PZ - 90.11 coordinates



RADAR  
TOWER  
133.800  
118.500

BEARINGS AND TRACKS ARE MAGNETIC  
ALT IN FEET, HGT IN METRES  
ELEV IN FEET AND METRES  
DISTANCES IN KILOMETRES

Alt set: -QNH(OFF on req);  
-hPa(mm on req).

**1** TRANSITION LEVEL:  
- FLO70 when QNH is 1013 hPa (760mm mercury column) or above;  
- FLO80 when QNH is 977 hPa (733mm mercury column) or above,  
but less than 1013 hPa (760mm mercury column);  
- FLO90 when QNH is less than 977 hPa (733mm mercury column).  
**NOTE**  
Heights are given from RWY 25 THR.

CHANGE: New chart