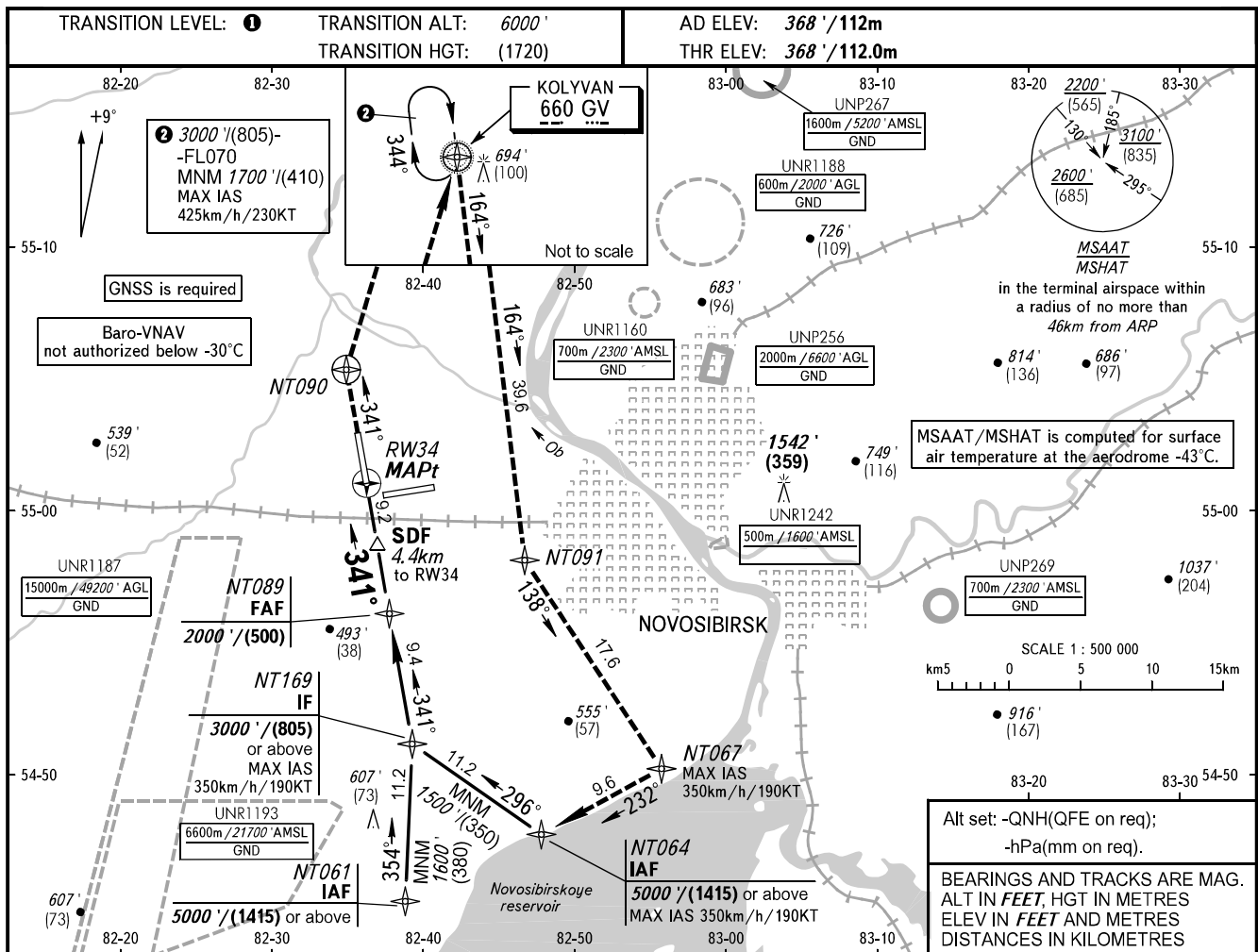


INSTRUMENT
APPROACH
CHART - ICAO

NOVOSIBIRSK, RUSSIA
TOLMACHEVO
RNAV RWY 34

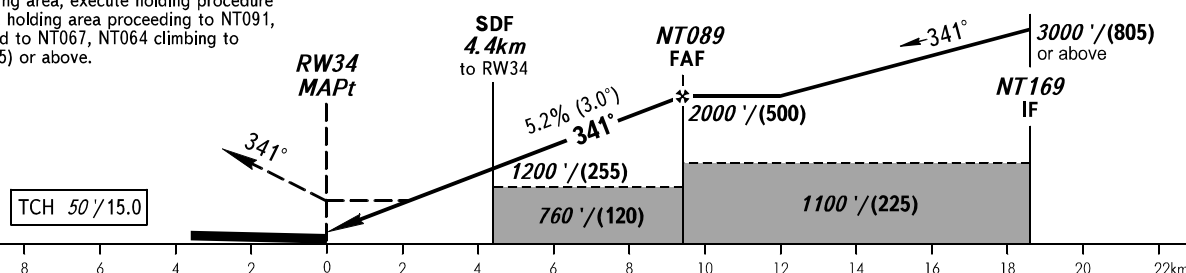
RADAR	122.000
TOWER	126.700



MISSED APPROACH

Climb on track 341° to NT090, turn RIGHT to NDB GV climbing to 3000'/(805) or above to join holding area, execute holding procedure and exit the holding area proceeding to NT091, then proceed to NT067, NT064 climbing to 5000'/(1415) or above.

DIST to RW34	2.0	4.0	6.0	8.0	9.2
ALTITUDE/HEIGHT	760'/(120)	1100'/(225)	1440'/(325)	1780'/(430)	2000'/(500)



OCA(H)		A	B	C	D
Straight-in Approach	LNAV/VNAV	630' (270') (85)	640' (280') (90)	650' (290') (90)	660' (300') (95)
	LNAV	750' (390') (120)	750' (390') (120)	750' (390') (120)	750' (390') (120)

TRANSITION LEVEL:
 - FLO70 when QNH is 1013 hPa (760mm mercury column) or above;
 - FLO80 when QNH is 977 hPa (733mm mercury column) or above, but less than 1013 hPa (760mm mercury column);
 - FLO90 when QNH is less than 977 hPa (733mm mercury column).
WARNING
 MAPt at RW34. Timing not authorized for defining MAPt.

GROUND SPEED	km/h	150	180	210	240	270	300	330	360	390	420	450
	kt	81	97	113	130	146	162	178	194	211	227	243
RATE OF DESCENT	m/s	2.2	2.6	3.0	3.5	3.9	4.3	4.8	5.2	5.6	6.1	6.5
	ft/min	427	512	597	682	768	853	938	1024	1109	1194	1280

CHANGE: Baro-VNAV