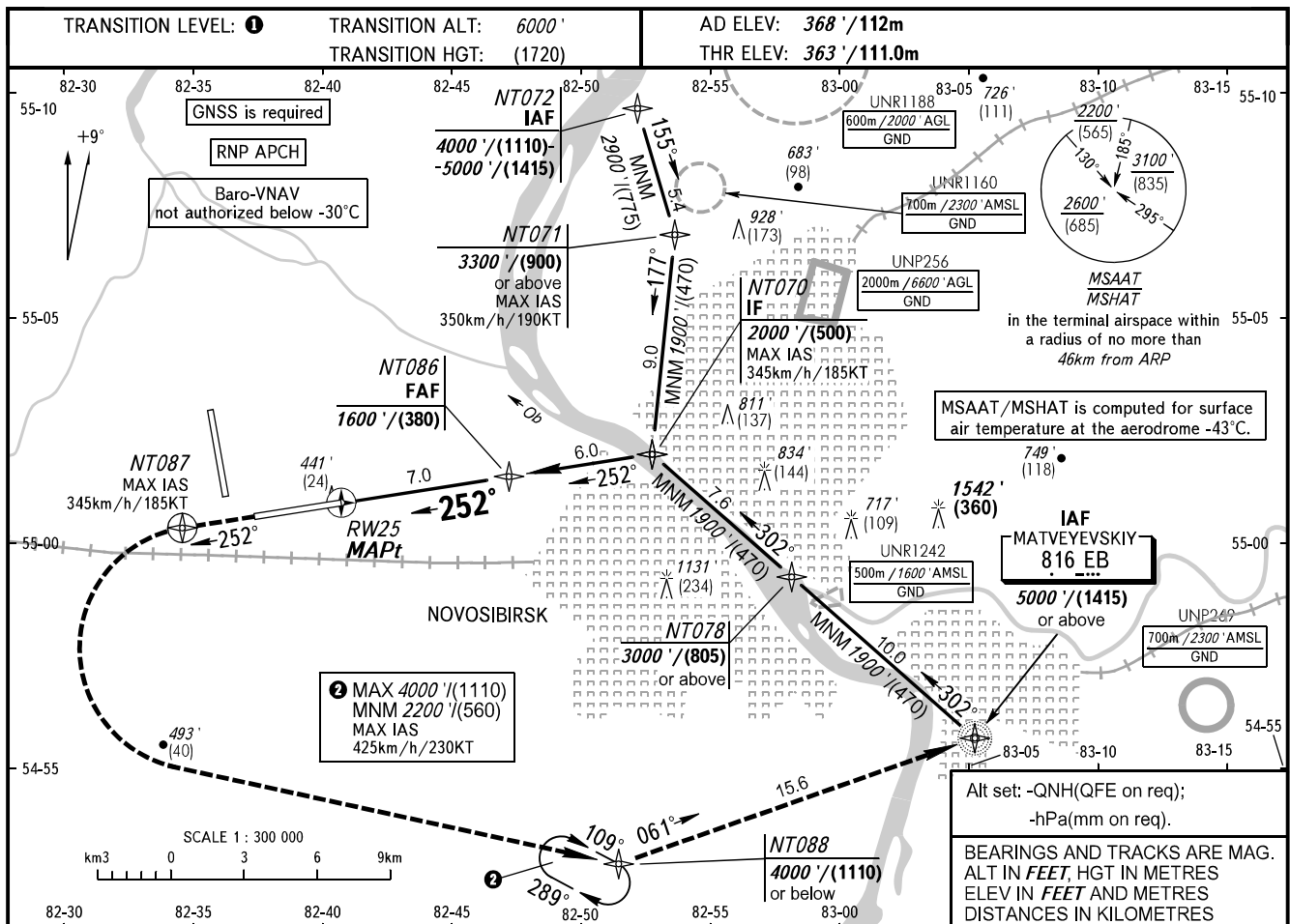


**INSTRUMENT  
APPROACH  
CHART - ICAO**

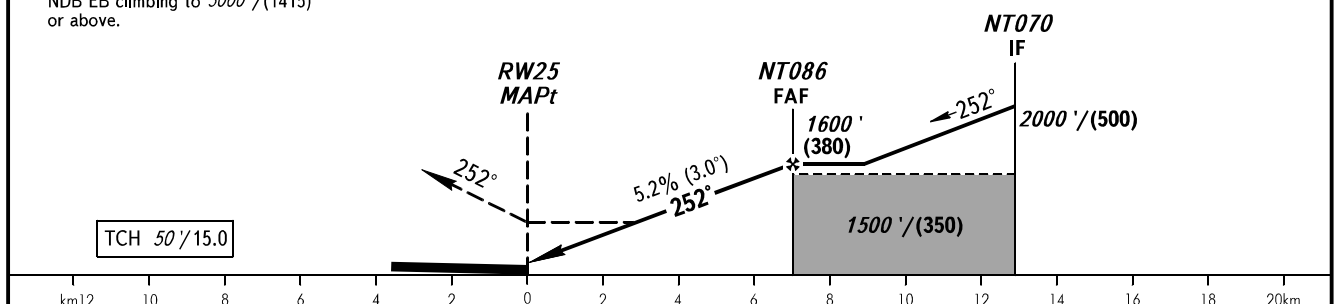
**NOVOSIBIRSK, RUSSIA  
TOLMACHEVO  
RNAV RWY 25**

RADAR **122.000**  
TOWER **118.500**



**MISSED APPROACH**  
Climb on track 252° to NT087, turn LEFT to NT088 climbing to 4000' (1110) or below, then to NDB EB climbing to 5000' (1415) or above.

DIST to RW25	3.0	5.0	7.0
ALTITUDE / HEIGHT	920' / (170)	1260' / (275)	1600' / (380)



OCA(H)		A	B	C	D
Straight-in Approach	LNAV/VNAV	610' (250') (80)	620' (260') (80)	650' (290') (90)	680' (320') (100)
	LNAV	760' (400') (125)	760' (400') (125)	760' (400') (125)	760' (400') (125)

**1** TRANSITION LEVEL:  
- FL070 when QNH is 1013 hPa (760mm mercury column) or above;  
- FL080 when QNH is 977 hPa (733mm mercury column) or above, but less than 1013 hPa (760mm mercury column);  
- FL090 when QNH is less than 977 hPa (733mm mercury column).

**WARNING**  
MAPt at RW25. Timing not authorized for defining MAPt.

GROUND SPEED	km/h	150	180	210	240	270	300	330	360	390	420	450
	kt	81	97	113	130	146	162	178	194	211	227	243
RATE OF DESCENT	m/s	2.2	2.6	3.0	3.5	3.9	4.3	4.8	5.2	5.6	6.1	6.5
	ft / min	427	512	597	682	768	853	938	1024	1109	1194	1280