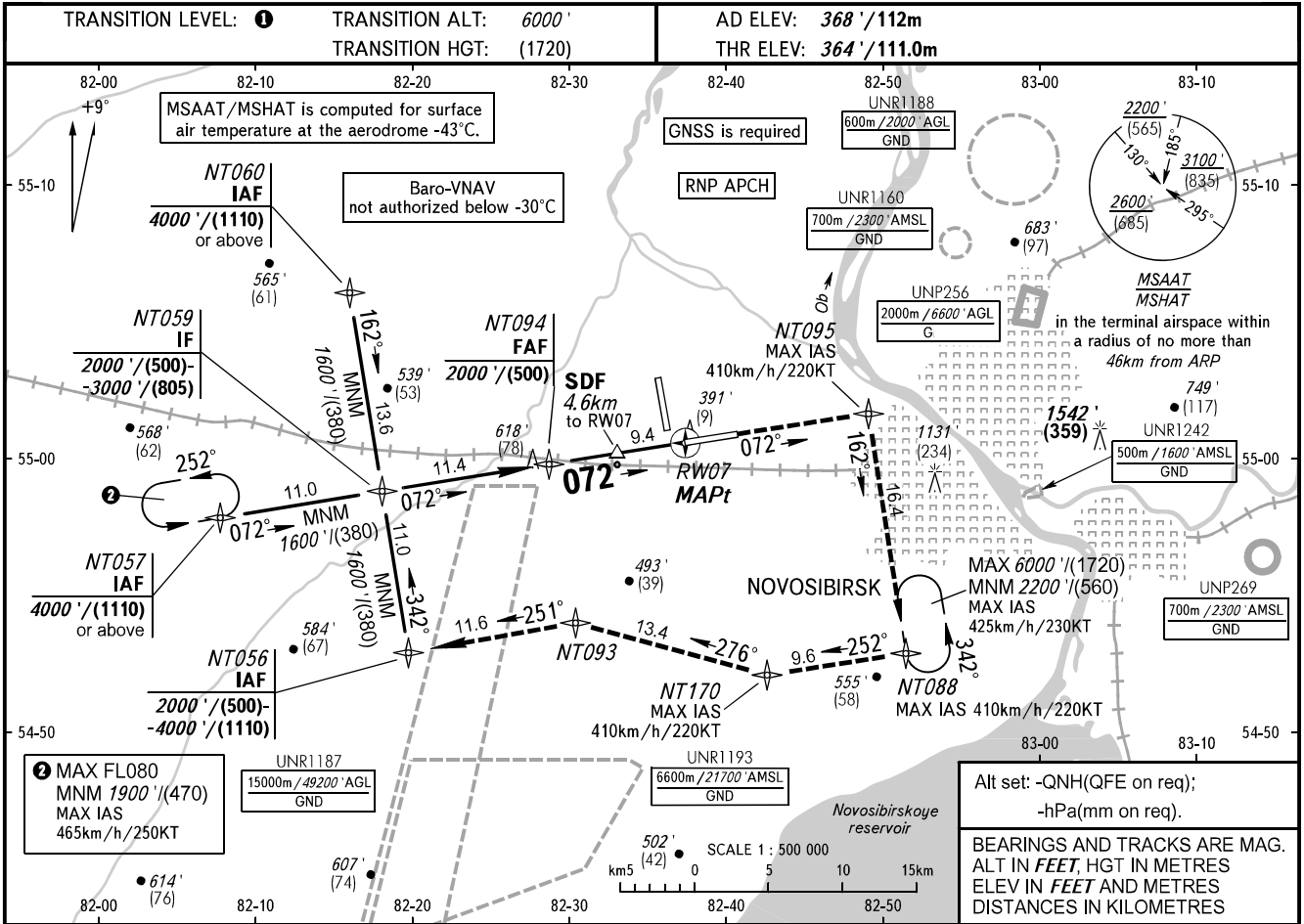


**INSTRUMENT  
APPROACH  
CHART - ICAO**

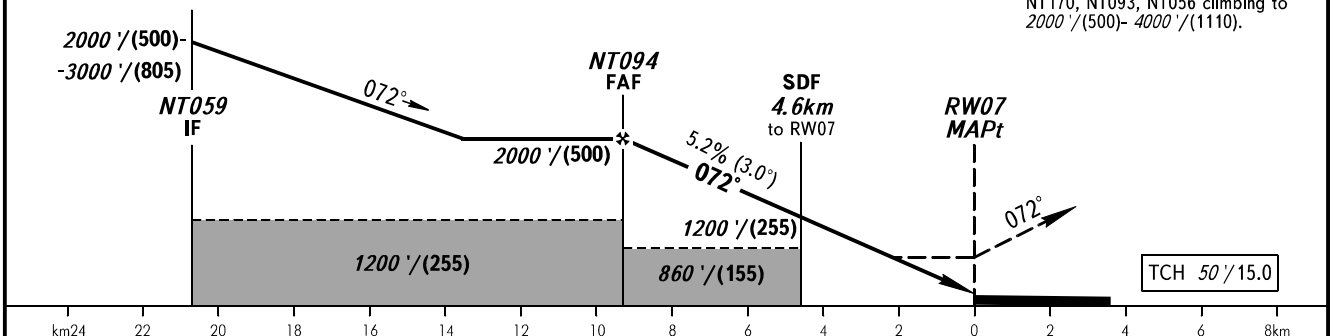
**NOVOSIBIRSK, RUSSIA  
TOLMACHEVO  
RNAV RWY 07**

RADAR	122.000
TOWER	118.500



DIST to RW07	9.4	8.0	6.0	4.0	2.6
ALTITUDE/HEIGHT	2000'/(500)	1780'/(430)	1440'/(325)	1100'/(225)	860'/(155)

**MISSED APPROACH**  
Climb on track 072° to NT095, turn RIGHT to NT088, then to NT170, NT093, NT056 climbing to 2000'/(500)- 4000'/(1110).



OCA(H)		A	B	C	D
Straight-in Approach	LNAV/VNAV	630' (270') (85)	640' (280') (90)	650' (290') (90)	660' (300') (95)
	LNAV	750' (390') (120)	750' (390') (120)	750' (390') (120)	750' (390') (120)

**1** TRANSITION LEVEL:  
- FL070 when QNH is 1013 hPa (760mm mercury column) or above;  
- FL080 when QNH is 977 hPa (733mm mercury column) or above, but less than 1013 hPa (760mm mercury column);  
- FL090 when QNH is less than 977 hPa (733mm mercury column).

**WARNING:**  
1. The approach procedure shall be used, if clearance to cross UNR1187 (during its activity) or arrangement with ATS unit are AVBL.  
2. Holding area shall be used, if clearance to cross UNR1187 (during its activity) or arrangement with ATS unit are AVBL.  
3. MAPt at RW07. Timing not authorized for defining MAPt.

GROUND SPEED	km/h	150	180	210	240	270	300	330	360	390	420	450
	kt	81	97	113	130	146	162	178	194	211	227	243
RATE OF DESCENT	m/s	2.2	2.6	3.0	3.5	3.9	4.3	4.8	5.2	5.6	6.1	6.5
	ft/min	427	512	597	682	768	853	938	1024	1109	1194	1280

CHANGE: New chart