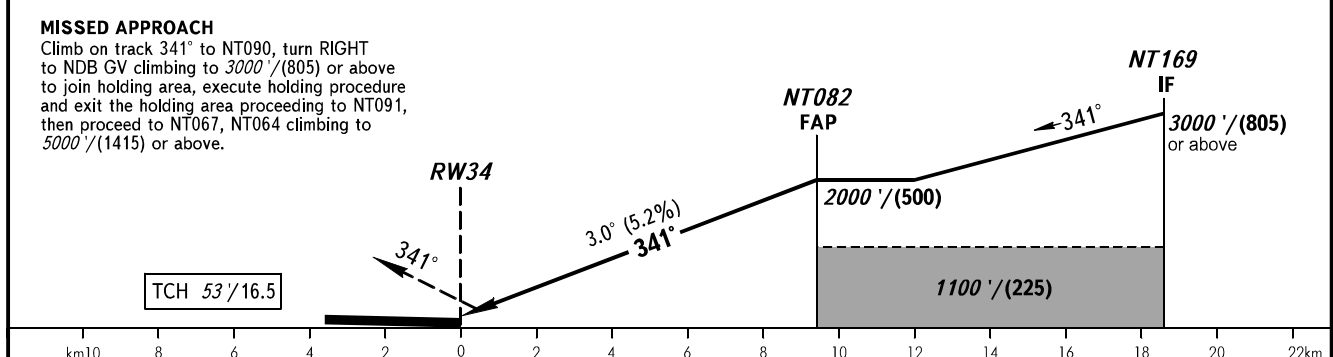
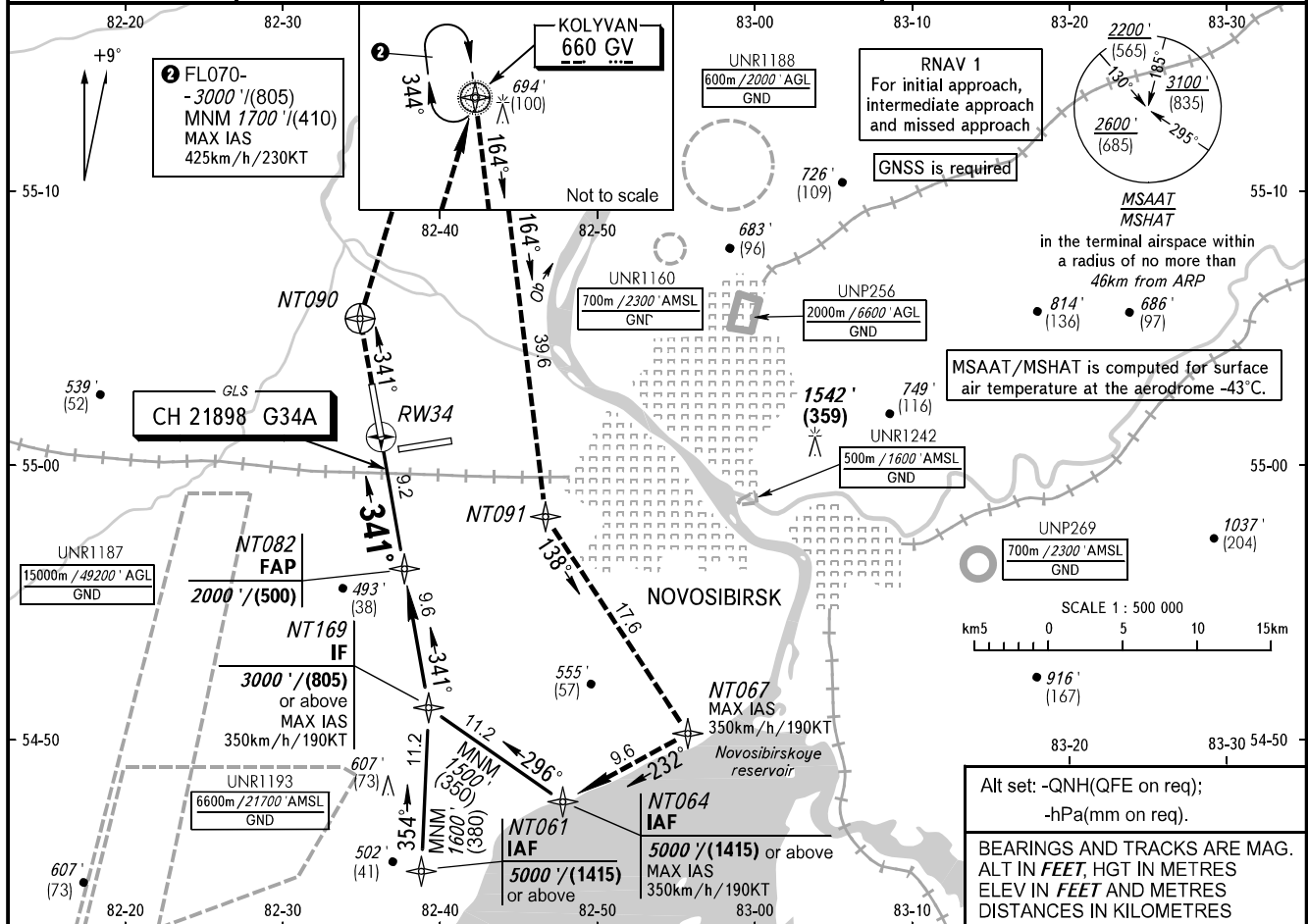


**INSTRUMENT
APPROACH
CHART - ICAO**

**NOVOSIBIRSK, RUSSIA
TOLMACHEVO
GLS RWY 34**

RADAR **122.000**
TOWER **126.700**

GBAS CH 21898 G34A **TRANSITION LEVEL:** ① **TRANSITION ALT:** 6000' **AD ELEV:** 368' / 112m
CH 21898 G34A **TRANSITION HGT:** (1720) **THR ELEV:** 368' / 112.0m



OCA(H)		A	B	C	D
Straight-in Approach	② 2.5%	531' (163') (50)	541' (173') (53)	570' (202') (62)	580' (212') (65)
	② 3.0%	531' (163') (50)	541' (173') (53)	551' (183') (56)	561' (193') (59)

① **TRANSITION LEVEL:**
- FLO70 when QNH is 1013 hPa (760mm mercury column) or above;
- FLO80 when QNH is 977 hPa (733mm mercury column) or above, but less than 1013 hPa (760mm mercury column);
- FLO90 when QNH is less than 977 hPa (733mm mercury column).

GROUND SPEED	km/h	150	180	210	240	270	300	330	360	390	420	450
	kt	81	97	113	130	146	162	178	194	211	227	243
RATE OF DESCENT	m/s	2.2	2.6	3.0	3.5	3.9	4.3	4.8	5.2	5.6	6.1	6.5
	ft/min	427	512	597	682	768	853	938	1024	1109	1194	1280