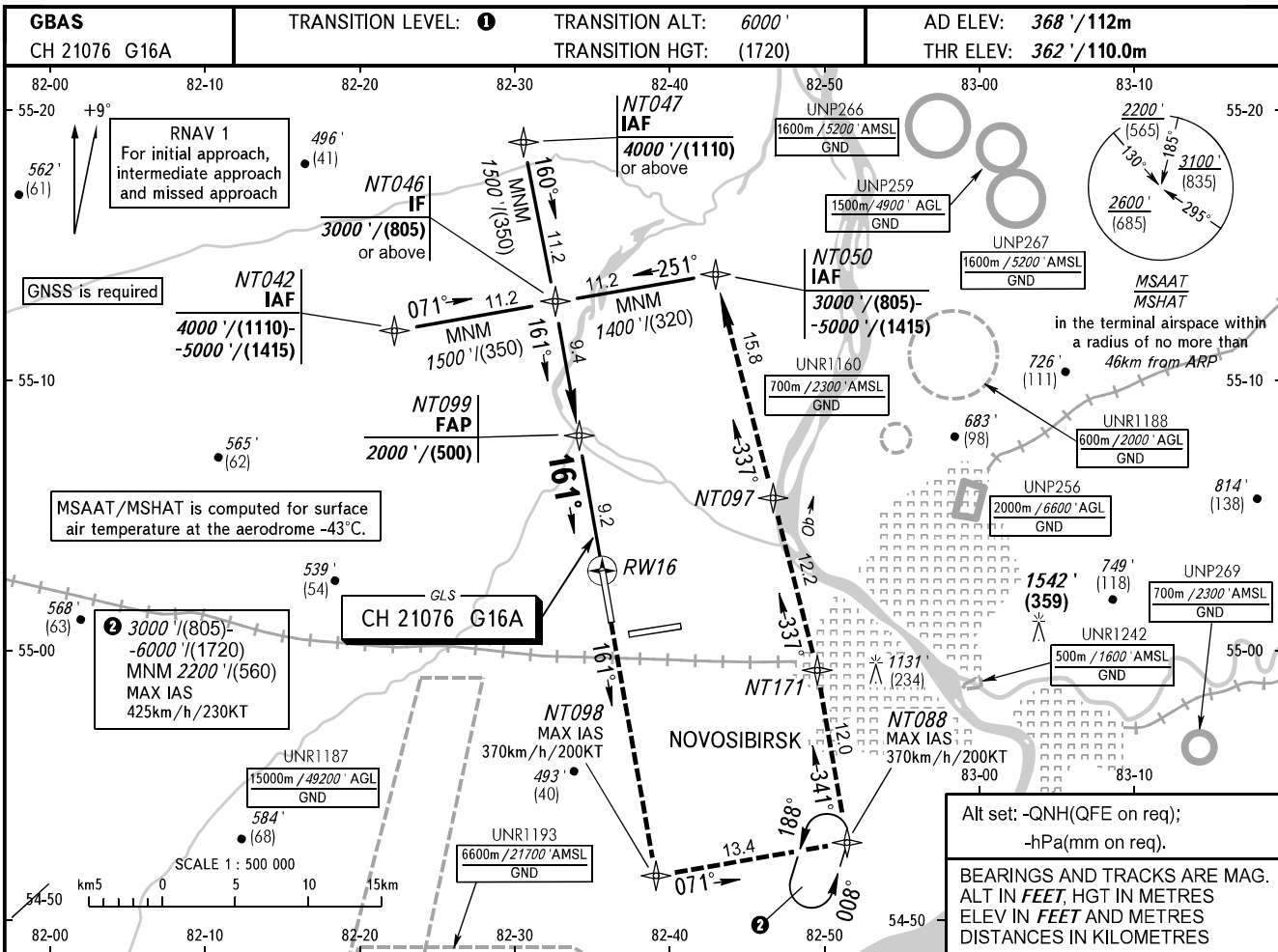


**INSTRUMENT
APPROACH
CHART - ICAO**

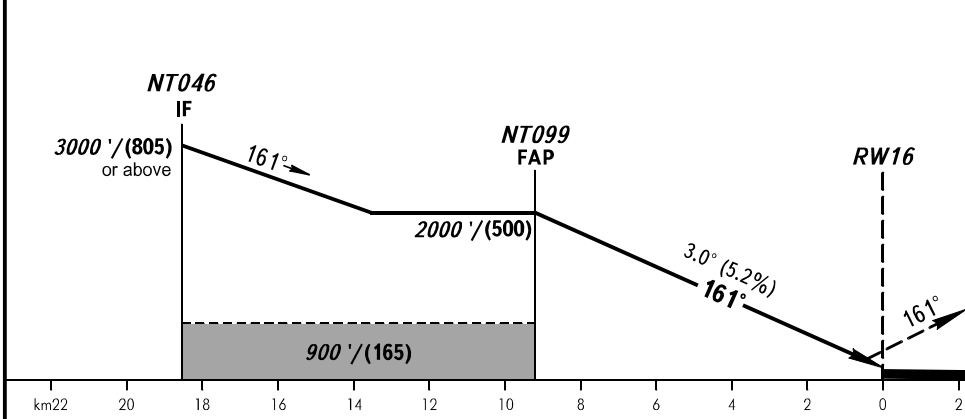
RADAR **122.000**
TOWER **126.700**

**NOVOSIBIRSK, RUSSIA
TOLMACHEVO
GLS RWY 16**



Alt set: -QNH(QFE on req);
-hPa(mm on req).
BEARINGS AND TRACKS ARE MAG.
ALT IN FEET, HGT IN METRES
ELEV IN FEET AND METRES
DISTANCES IN KILOMETRES

MISSED APPROACH
Climb on track 161° to NT098, turn LEFT to NT088, then to NT171, NT097, NT050 climbing to 3000'/(805)-5000'/(1415).



OCA(H)		A	B	C	D
Straight-in Approach	CAT I	545' (183') (56)	554' (192') (59)	564' (202') (62)	574' (212') (65)

1 TRANSITION LEVEL:
- FL070 when QNH is 1013 hPa (760mm mercury column) or above;
- FL080 when QNH is 977 hPa (733mm mercury column) or above, but less than 1013 hPa (760mm mercury column);
- FL090 when QNH is less than 977 hPa (733mm mercury column).

GROUND SPEED	km/h	150	180	210	240	270	300	330	360	390	420	450
	kt	81	97	113	130	146	162	178	194	211	227	243
RATE OF DESCENT	m/s	2.2	2.6	3.0	3.5	3.9	4.3	4.8	5.2	5.6	6.1	6.5
	ft/min	427	512	597	682	768	853	938	1024	1109	1194	1280

CHANGE: New chart