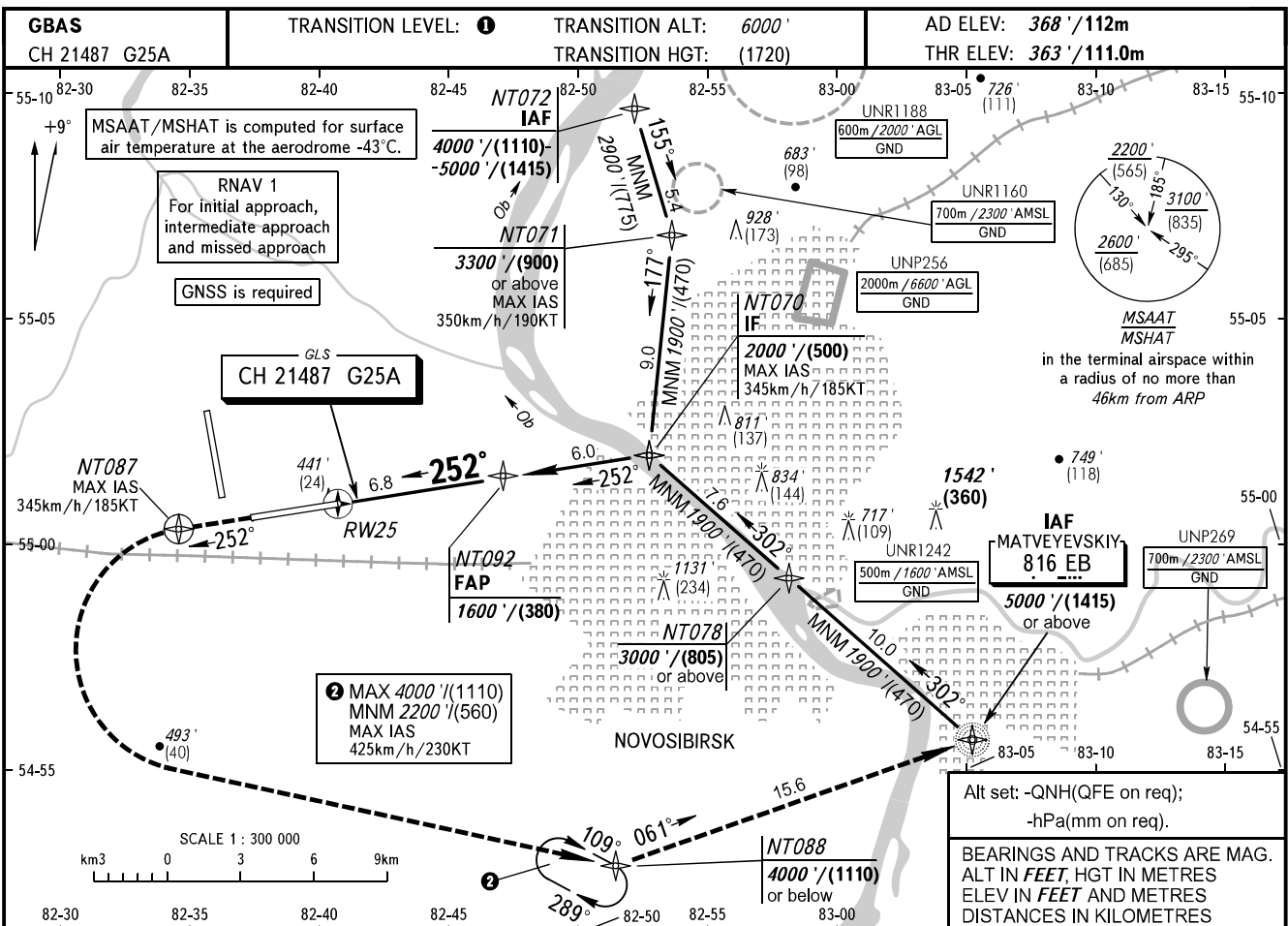


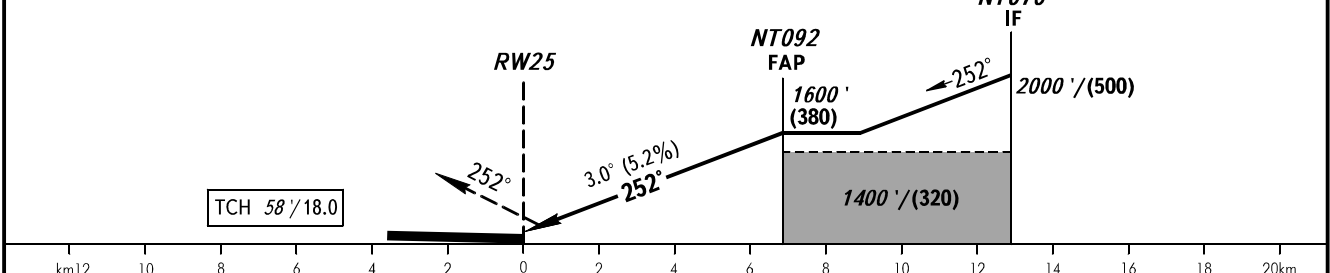
**INSTRUMENT
APPROACH
CHART - ICAO**

**NOVOSIBIRSK, RUSSIA
TOLMACHEVO
GLS RWY 25**

RADAR **122.000**
TOWER **118.500**



MISSED APPROACH
Climb on track 252° to NT087, turn LEFT to NT088 climbing to 4000' / (1110) or below, then to NDB EB climbing to 5000' / (1415) or above.



OCA(H)		A	B	C	D
Straight-in Approach	CAT I	502' (139') (43)	510' (147') (45)	522' (159') (49)	537' (174') (54)

1 TRANSITION LEVEL:
- FL070 when QNH is 1013 hPa (760mm mercury column) or above;
- FL080 when QNH is 977 hPa (733mm mercury column) or above, but less than 1013 hPa (760mm mercury column);
- FL090 when QNH is less than 977 hPa (733mm mercury column).

GROUND SPEED	km/h	150	180	210	240	270	300	330	360	390	420	450
	kt	81	97	113	130	146	162	178	194	211	227	243
RATE OF DESCENT	m/s	2.2	2.6	3.0	3.5	3.9	4.3	4.8	5.2	5.6	6.1	6.5
	ft / min	427	512	597	682	768	853	938	1024	1109	1194	1280