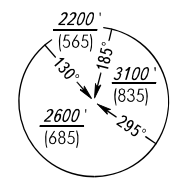
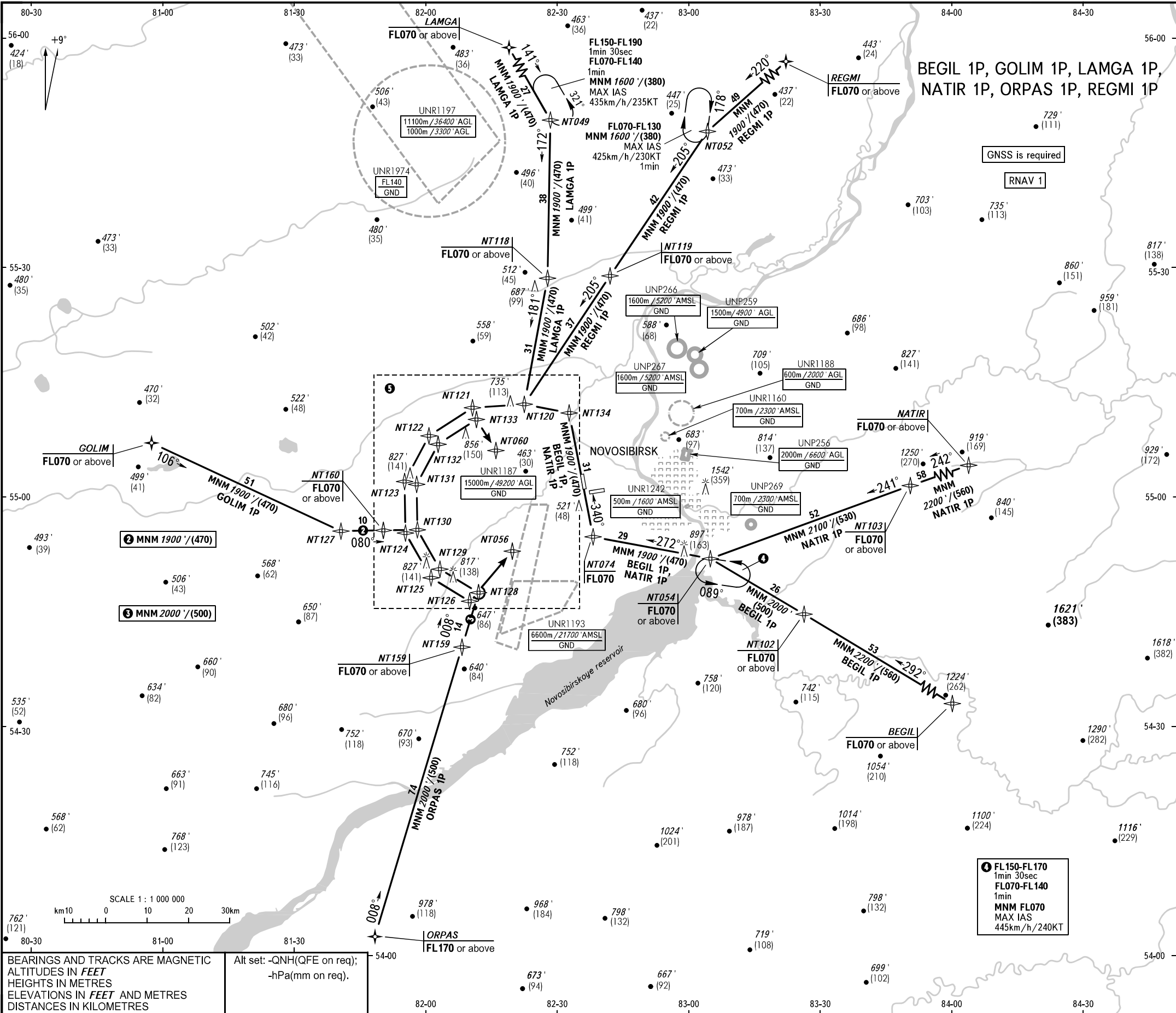


STANDARD ARRIVAL CHART
INSTRUMENT (STAR) - ICAO

NOVOSIBIRSK, RUSSIA
TOLMACHEVO
RNAV RWY 07

TRANSITION
LEVEL : 1



in the terminal airspace within a radius of no more than 46km from ARP

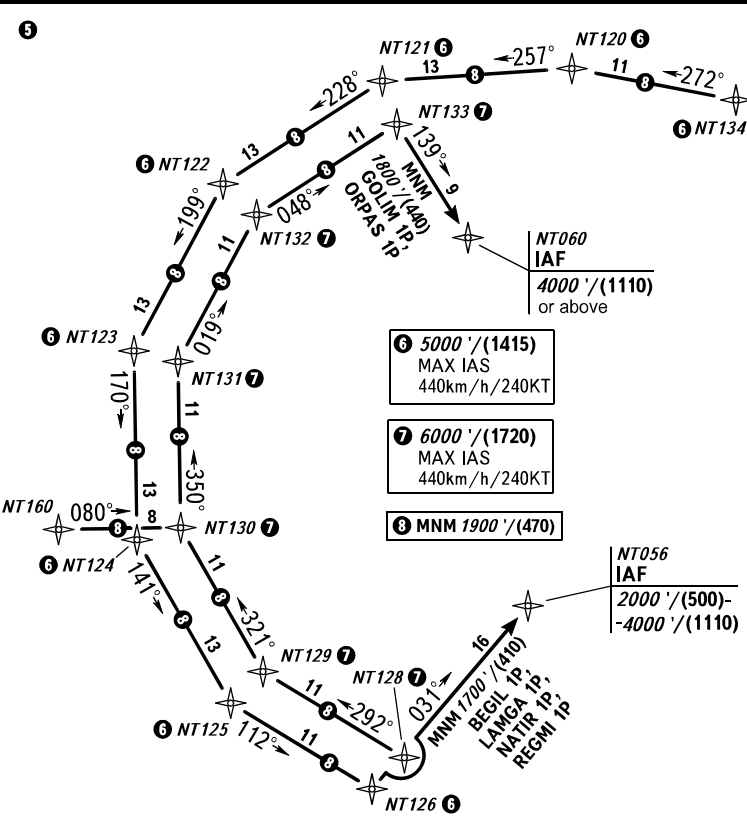
MSAAT/MSHAT is computed for surface air temperature at the aerodrome -43°C.

WARNING
Holding area over NT049 shall be used, if clearance to cross UNR1197 (during its activity), UNR1974 (during its activity) or arrangement with ATS unit are AVBL.

1 TRANSITION LEVEL:

- FL070 when QNH is 1013 hPa (760mm mercury column) or above;
- FL080 when QNH is 977 hPa (733mm mercury column) or above, but less than 1013 hPa (760mm mercury column);
- FL090 when QNH is less than 977 hPa (733mm mercury column).

APPROACH	127.500
RADAR	122.000
TOWER	118.500



NOT TO SCALE

BEARINGS AND TRACKS ARE MAGNETIC
ALTITUDES IN FEET
HEIGHTS IN METRES
ELEVATIONS IN FEET AND METRES
DISTANCES IN KILOMETRES

Alt set: -QNH(QFE on req);
-hPa(mm on req).