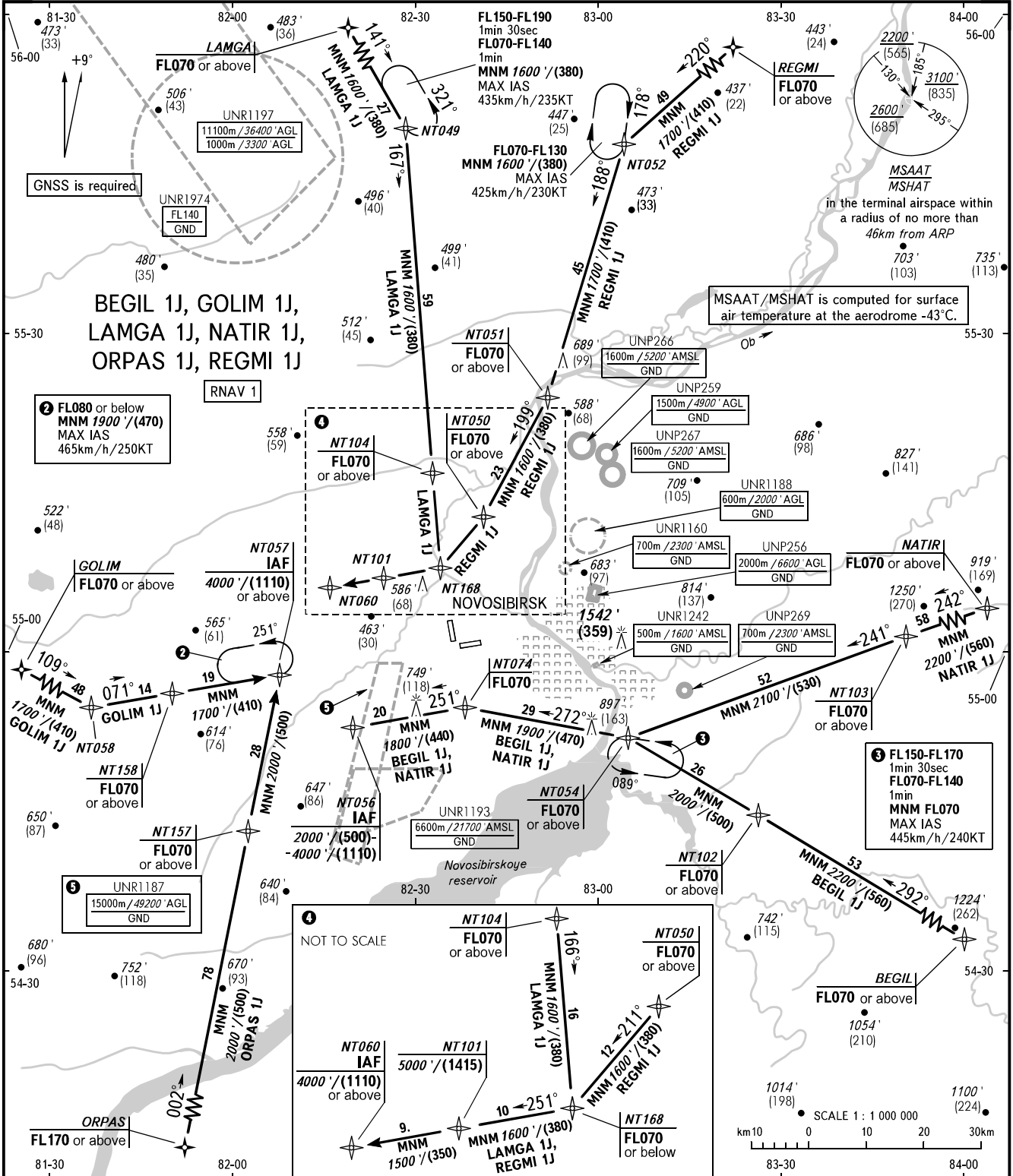


STANDARD ARRIVAL CHART  
INSTRUMENT (STAR) - ICAO

NOVOSIBIRSK, RUSSIA  
TOLMACHEVO  
RNAV RWY 07

TRANSITION  
LEVEL : 1



APPROACH 127.500  
RADAR 122.000  
TOWER 118.500

**WARNING:**

- Holding area over NT049 shall be used, if clearance to cross UNR1197 (during its activity), UNR1974 (during its activity) or arrangement with ATS unit are AVBL.
- Holding area over NT057 shall be used, if clearance to cross UNR1187 (during its activity) or arrangement with ATS unit are AVBL.

**1 TRANSITION LEVEL:**

- FL070 when QNH is 1013 hPa (760mm mercury column) or above;
- FL080 when QNH is 977 hPa (733mm mercury column) or above, but less than 1013 hPa (760mm mercury column);
- FL090 when QNH is less than 977 hPa (733mm mercury column).

BEARINGS AND TRACKS ARE MAGNETIC  
ALTITUDES IN FEET, HEIGHTS IN METRES  
ELEVATIONS IN METRES AND FEET  
DISTANCES IN KILOMETRES

Alt set: -QNH(QFE on req);  
-hPa(mm on req).

CHANGE: New chart