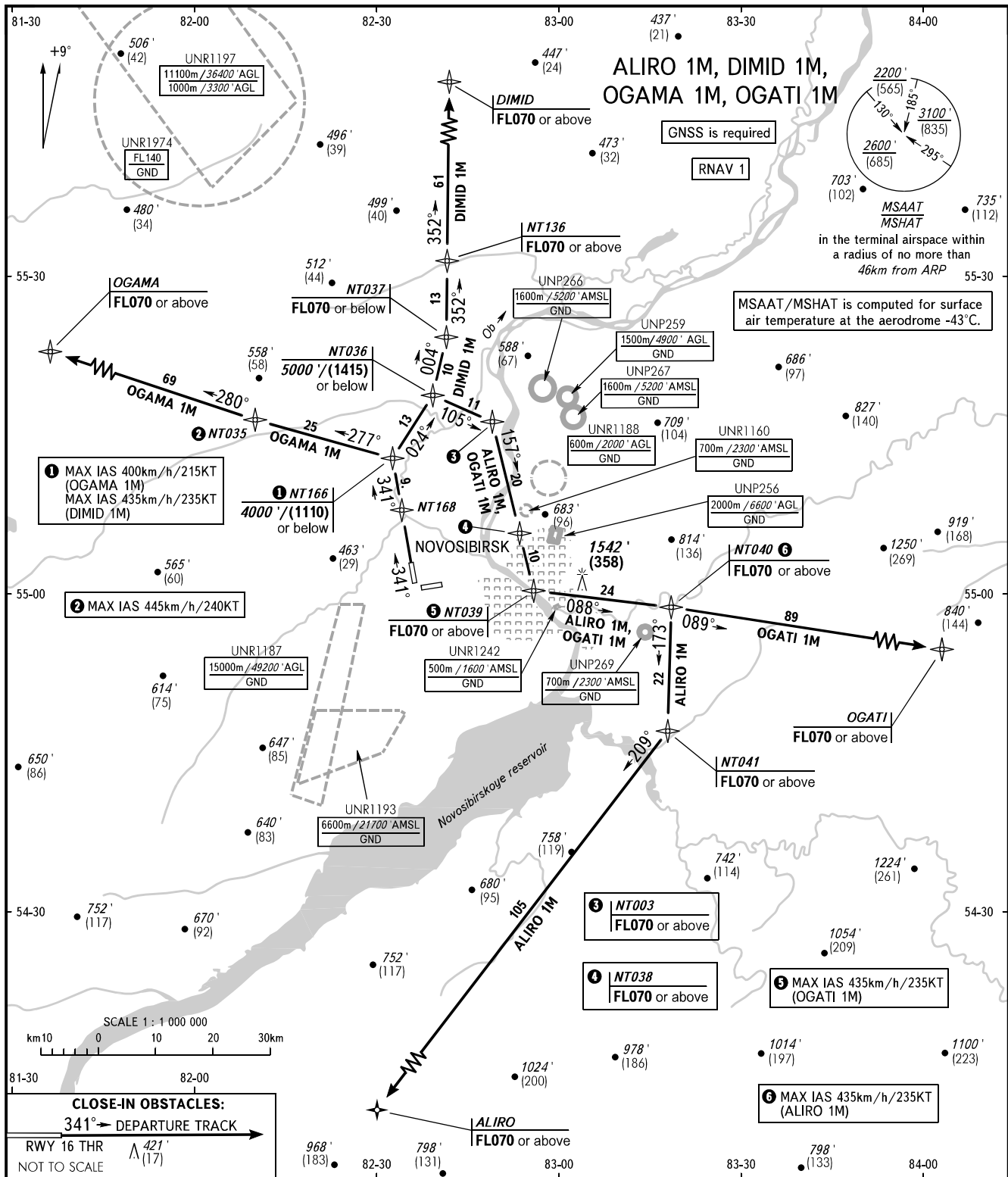


STANDARD DEPARTURE CHART
INSTRUMENT (SID) - ICAO

TRANSITION ALT : 6000'
TRANSITION HGT : (1720)

NOVOSIBIRSK, RUSSIA
TOLMACHEVO
RNAV RWY 34



TOWER 126.700
RADAR 122.000
APPROACH 127.500

WARNING
The minimum climb gradients are as follows (required due to the airspace structure):
- 4.6% up to FL070 for ALIRO 1M, OGATI 1M;
- 3.9% up to FL070 for DIMID 1M.

BEARINGS AND TRACKS ARE MAGNETIC
ALTITUDES IN FEET, HEIGHTS IN METRES
ELEVATIONS IN METRES AND FEET
DISTANCES IN KILOMETRES

Alt set: -QNH(QFE on req);
-hPa(mm on req).

CHANGE: NT036