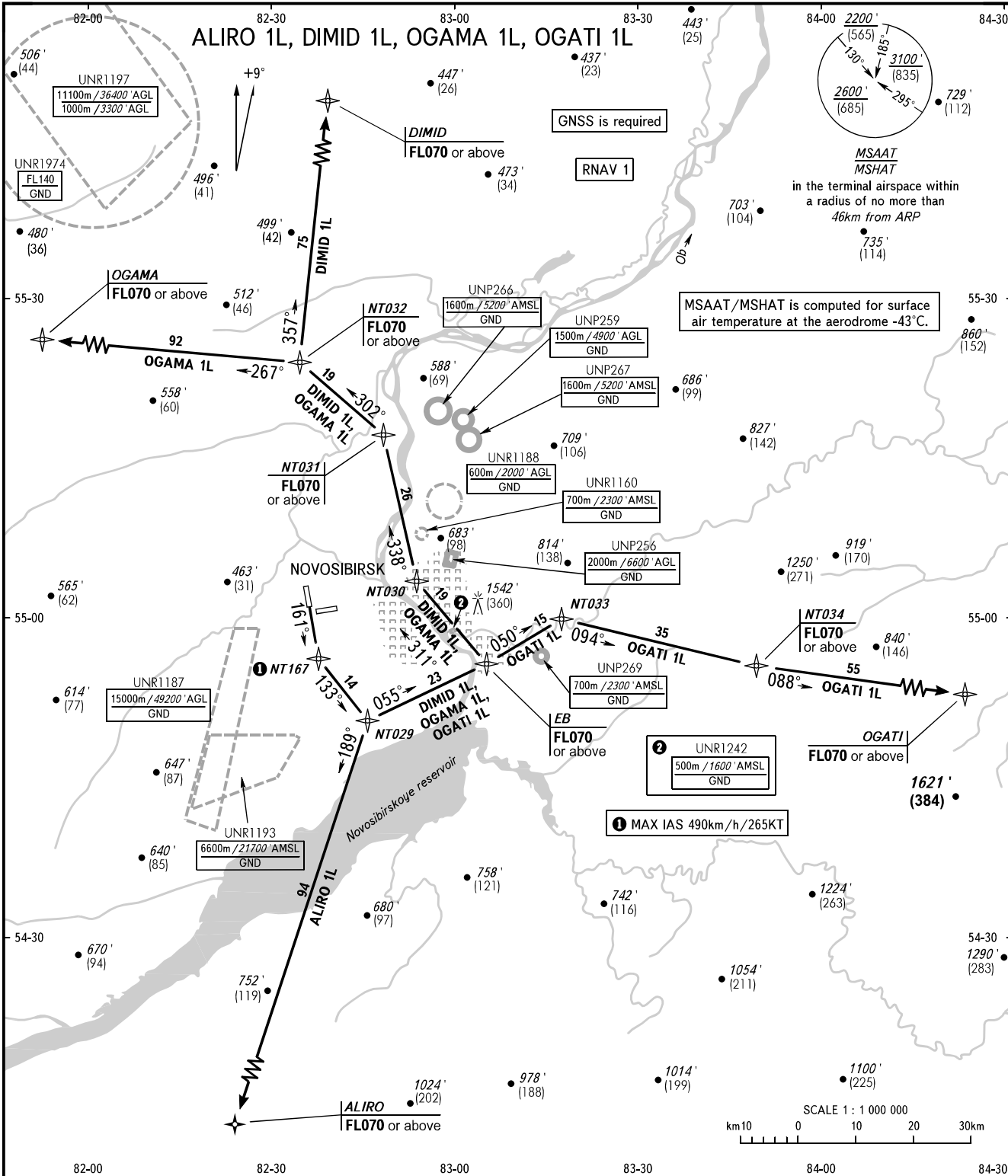


STANDARD DEPARTURE CHART  
INSTRUMENT (SID) - ICAO

TRANSITION ALT : 6000'  
TRANSITION HGT: (1720)

NOVOSIBIRSK, RUSSIA  
TOLMACHEVO  
RNAV RWY 16



TOWER	126.700
RADAR	122.000
APPROACH	127.500

**WARNING**  
The minimum climb gradient required due to the airspace structure is 5.6% up to FL070 for DIMID 1L, OGAMA 1L.

BEARINGS AND TRACKS ARE MAGNETIC  
ALTITUDES IN FEET, HEIGHTS IN METRES  
ELEVATIONS IN METRES AND FEET  
DISTANCES IN KILOMETRES

Alt set: -QNH(QFE on req);  
-hPa(mm on req).

CHANGE: NIL