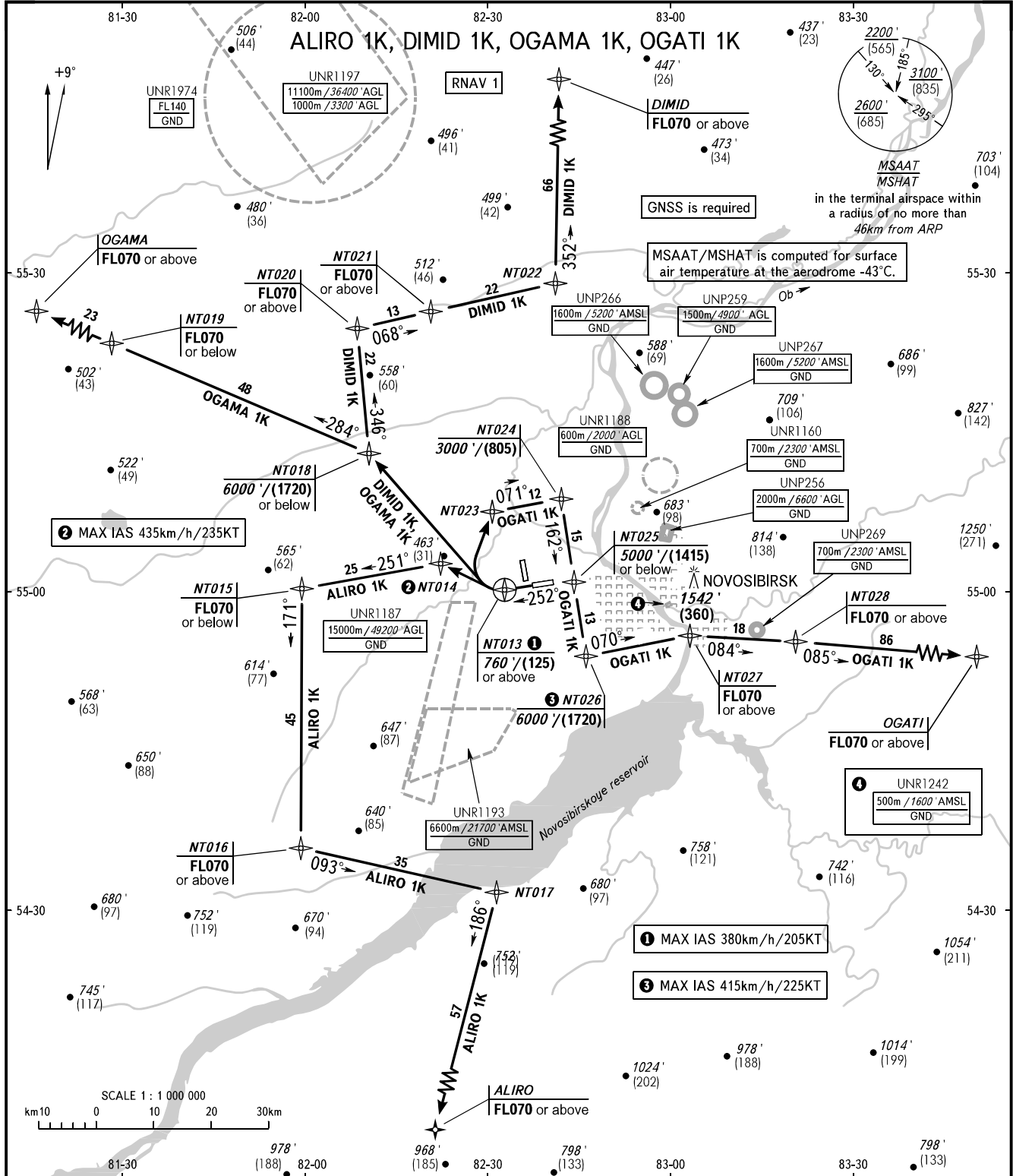


STANDARD DEPARTURE CHART
INSTRUMENT (SID) - ICAO

TRANSITION ALT : 6000'
TRANSITION HGT : (1720)

NOVOSIBIRSK, RUSSIA
TOLMACHEVO
RNAV RWY 25



TOWER	118.500	WARNING
RADAR	122.000	The minimum climb gradient to NT013 required
APPROACH	127.500	due to the airspace structure is 3.9% up for all SIDs.

BEARINGS AND TRACKS ARE MAGNETIC ALTITUDES IN FEET, HEIGHTS IN METRES ELEVATIONS IN METRES AND FEET DISTANCES IN KILOMETRES	Alt set: -QNH(QFE on req); -hPa(mm on req).
--	--