

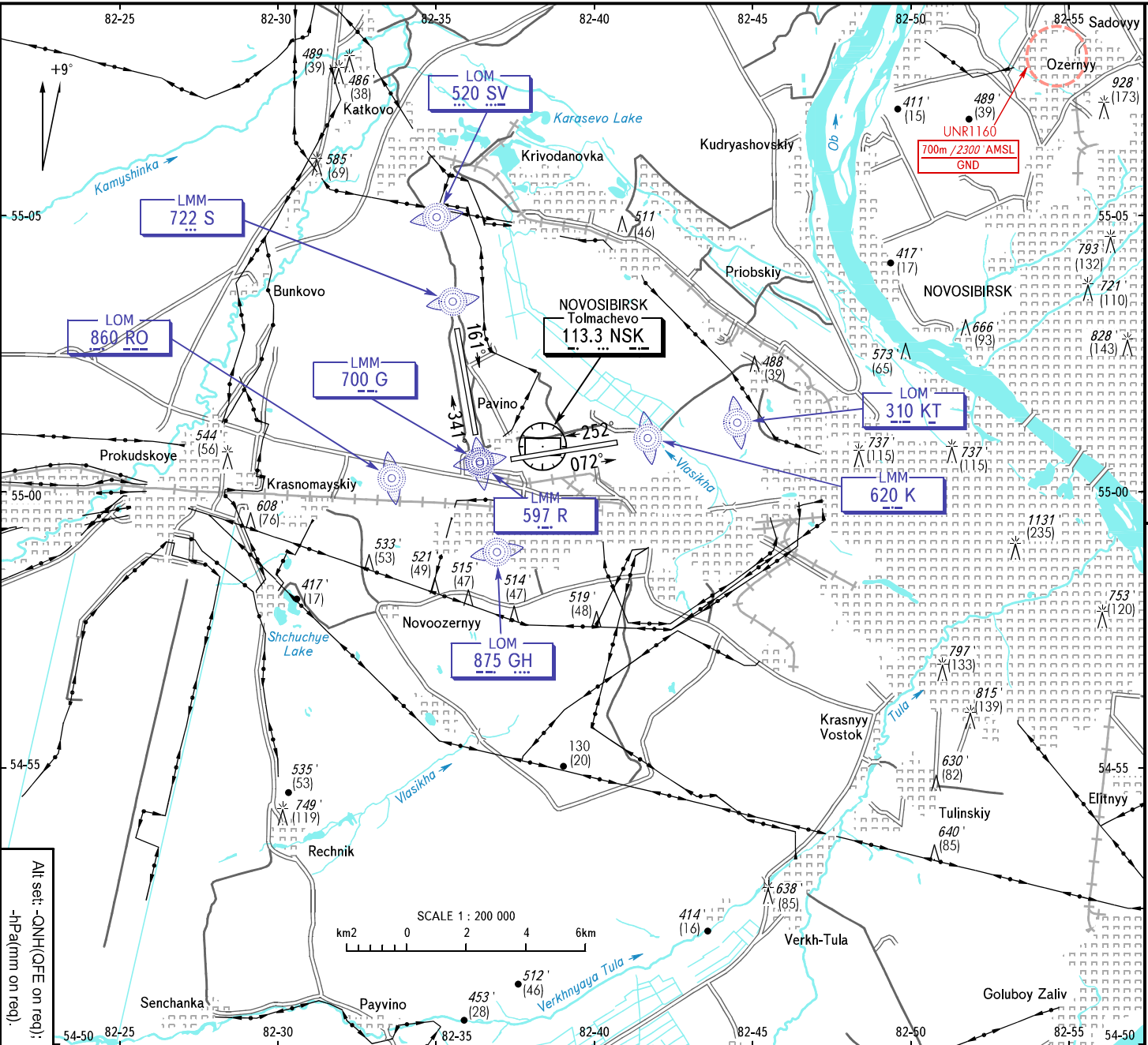
VISUAL  
APPROACH  
CHART - ICAO

TOWER (RWY 07/25) 118.500  
(RWY 16/34) 126.700  
RADAR 122.000

NOVOSIBIRSK, RUSSIA  
TOLMACHEVO  
RWY 07/25, 16/34

TRANSITION LEVEL: 1

AD ELEV: 368' / 112m



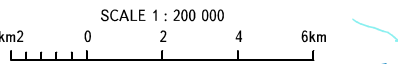
TRANSITION LEVEL:

- FLO70 when QNH is 1013 hPa (760mm mercury column) or above;
- FLO80 when QNH is 977 hPa (733mm mercury column) or above, but less than 1013 hPa (760mm mercury column);
- FLO90 when QNH is less than 977 hPa (733mm mercury column).

NOTE

Heights are given from RWY 16 THR.

All set: -QNH(QFE on req.);  
-hPa(m on req.).



+9°

55-05

55-00

54-55

54-50

82-25

82-30

82-35

82-40

82-45

82-50

82-55

82-55

82-55

55-05

55-00

54-55

54-50