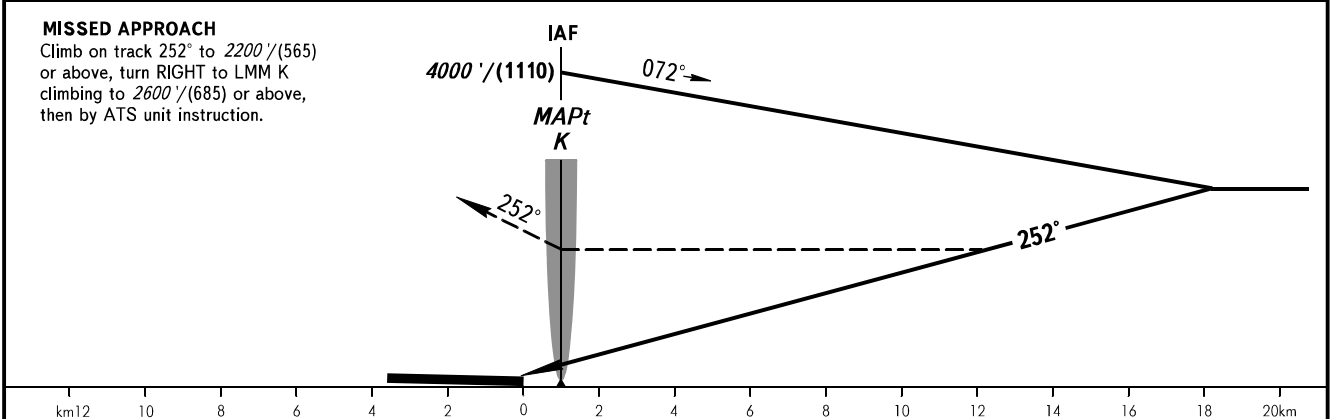
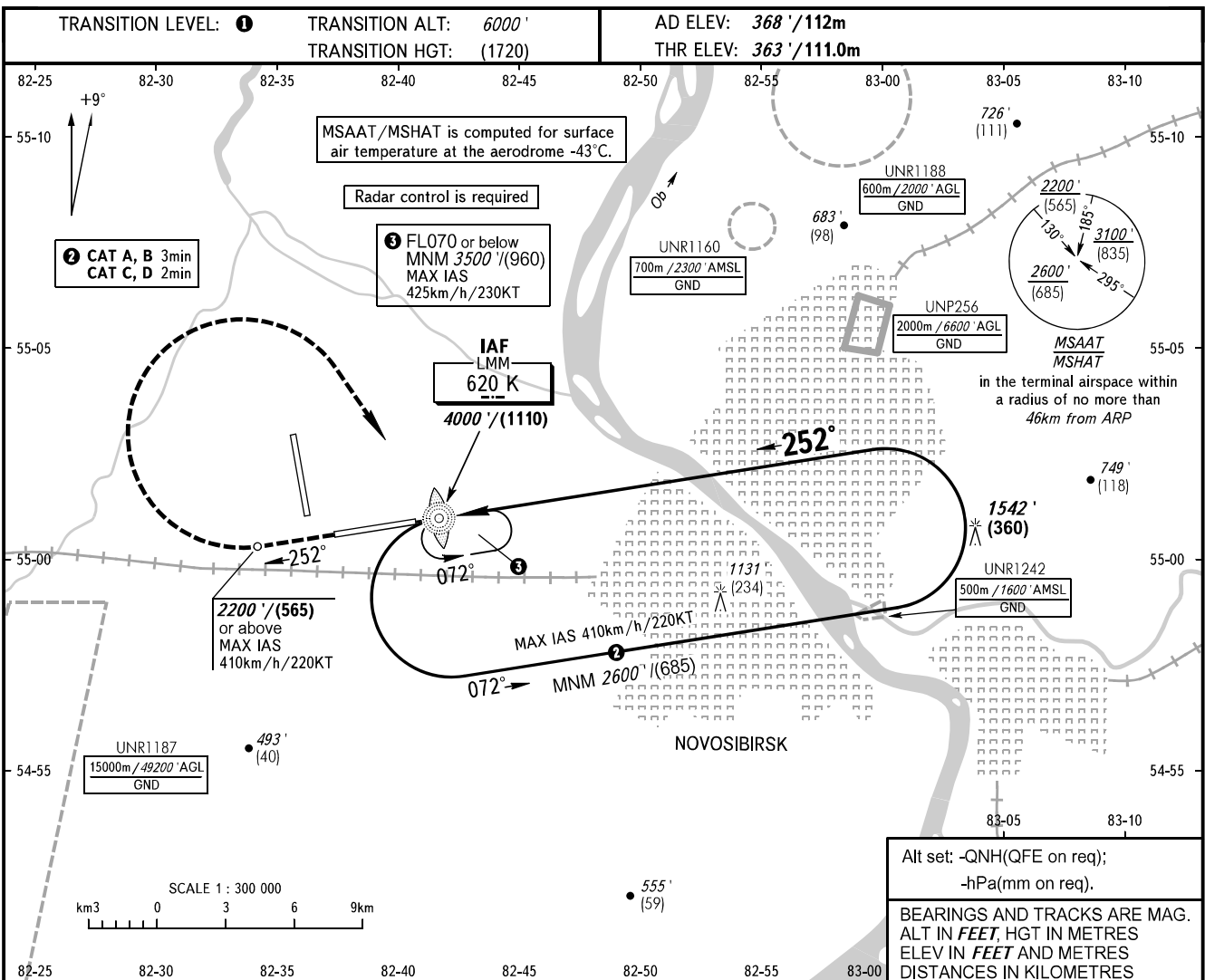


**INSTRUMENT  
APPROACH  
CHART - ICAO**

RADAR	<b>122.000</b>
TOWER	<b>118.500</b>

**NOVOSIBIRSK, RUSSIA  
TOLMACHEVO  
NDB Y RWY 25**



OCA(H)	A	B	C	D
Straight-in Approach	1710' (1350') (415)	1710' (1350') (415)	1710' (1350') (415)	1710' (1350') (415)

**1** TRANSITION LEVEL:  
- FL070 when QNH is 1013 hPa (760mm mercury column) or above;  
- FL080 when QNH is 977 hPa (733mm mercury column) or above, but less than 1013 hPa (760mm mercury column);  
- FL090 when QNH is less than 977 hPa (733mm mercury column).

**WARNING:**  
1. The approach procedure shall be used by arrangement with ATS unit.  
2. Holding area shall be used, if clearance to cross UNR1187 (during its activity), UNP256 or arrangement with ATS unit are AVBL.  
3. MAPt at LMM K. Timing not authorized for defining MAPt. Turn before passing MAPt is PROHIBITED.

CHANGE: New chart