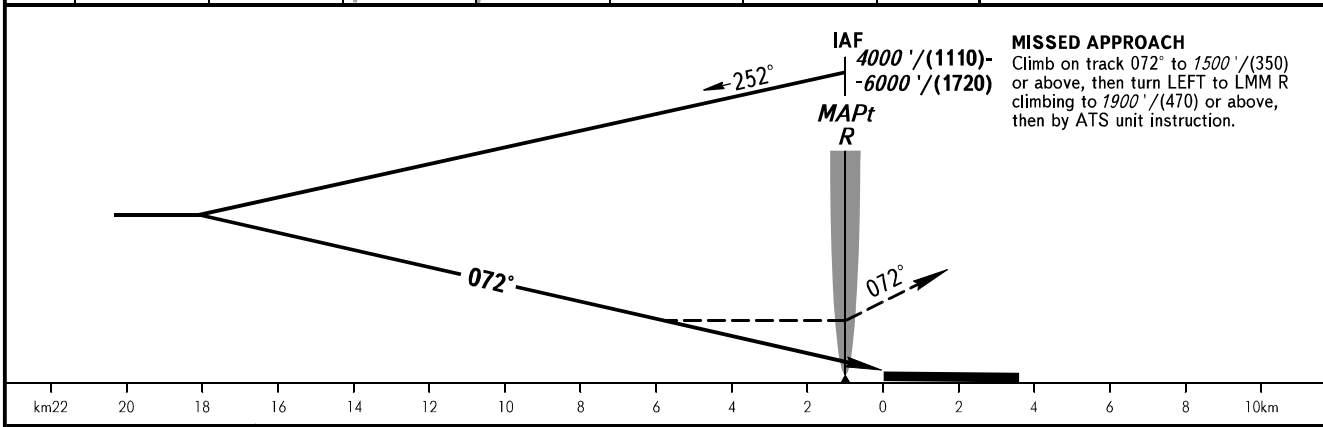
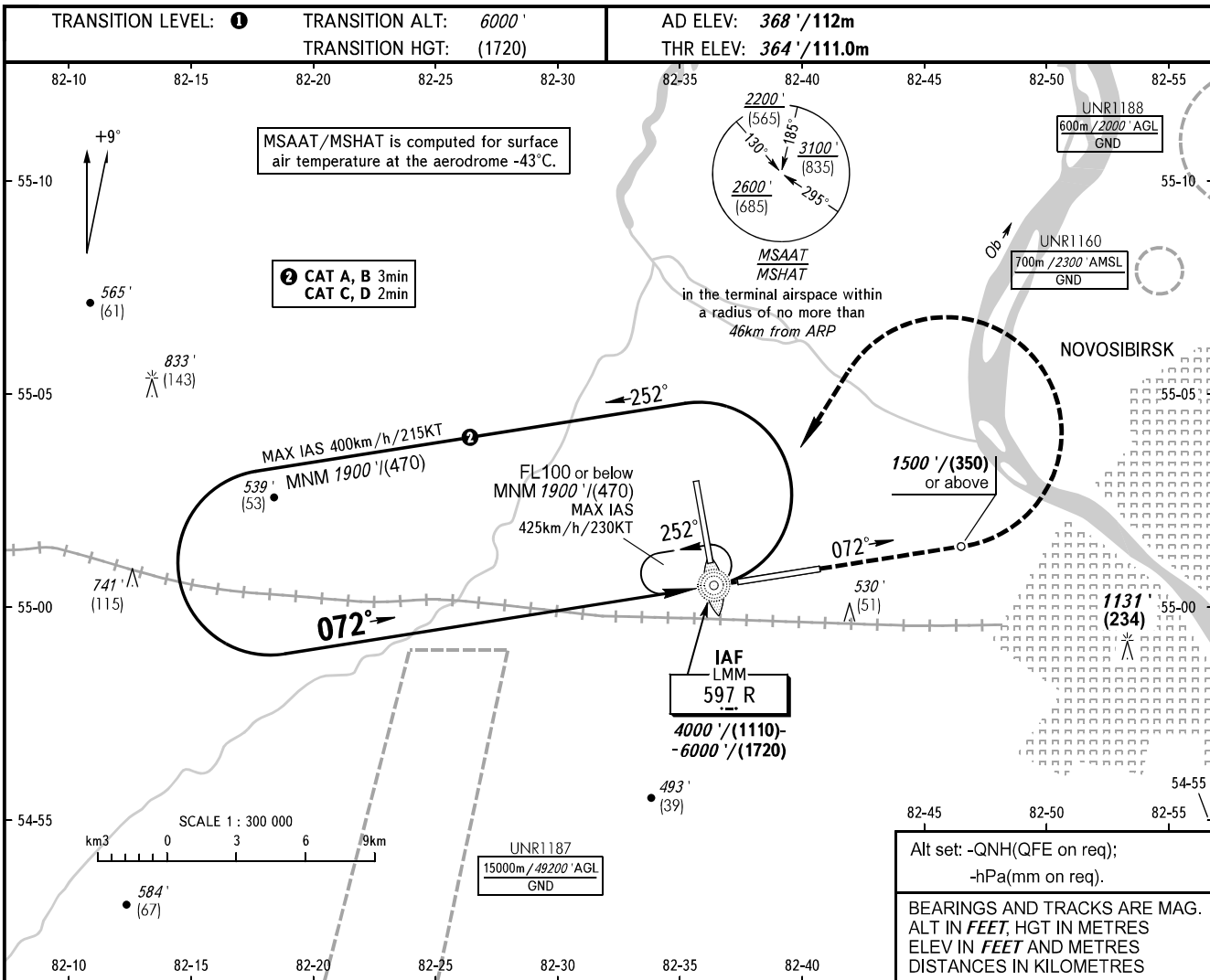


**INSTRUMENT
APPROACH
CHART - ICAO**

| | |
|-------|---------|
| RADAR | 122.000 |
| TOWER | 118.500 |

NOVOSIBIRSK, RUSSIA
TOLMACHEVO
NDB Y RWY 07



| OCA(H) | | A | B | C | D |
|----------------------|--|----------------------|----------------------|----------------------|----------------------|
| Straight-in Approach | | 990' (630') (195) | 990' (630') (195) | 990' (630') (195) | 990' (630') (195) |
| | | | | | |

1 TRANSITION LEVEL:
 - FL070 when QNH is 1013 hPa (760mm mercury column) or above;
 - FL080 when QNH is 977 hPa (733mm mercury column) or above, but less than 1013 hPa (760mm mercury column);
 - FL090 when QNH is less than 977 hPa (733mm mercury column).

WARNING:
 1. The approach procedure shall be used, if clearance to cross UNR1187 (during its activity) or arrangement with ATS unit are AVBL.
 2. Holding area shall be used, if clearance to cross UNR1187 (during its activity), UNR1193 (during its activity) or arrangement with ATS unit are AVBL.
 3. MAPt at LMM R. Timing not authorized for defining MAPt. Turn before passing MAPt is PROHIBITED.

CHANGE: New chart